



Standards for Technology in Automotive Retail

**Implementation Guidelines
Show Parts Locator
Repository Version Rev4.5.4**

Table of Contents

Overview	1
Schema Field Usage	1
Business Scenario	1
Relationship Diagram	3
Schema Document Properties	4
Components and Data Types	5
AddressBase	5
Amount	6
ApplicationArea	6
BusinessObjectDocument	8
ConfirmableVerb	9
DealerNetPrice	10
DealerParty	10
DealerPartyBase	12
Description	12
Destination	13
DocumentId	14
HeaderBase	15
Id	15
ItemId	16
ItemIdDescription	16
ItemQuantity	17
LocatedLine	17
LocatedLines	19
LocatedLineUID	20
LocationId	20
LocationName	21
MinimumAcknowledgementStatus	21
OrganizationAddress	22
OrganizationContact	23
OrganizationContactPersonName	24
OrganizationId	25

<u>OrganizationPartyEmail</u>	25
<u>OrganizationPartyFax</u>	25
<u>OrganizationPartyTelephone</u>	26
<u>ParentLocatedLineUID</u>	26
<u>PartManufacturer</u>	27
<u>PartsBase</u>	27
<u>PartsLocator</u>	28
<u>PartsLocatorHeader</u>	29
<u>PartsLocatorSupplyingParty</u>	30
<u>PartyBase</u>	31
<u>PartyId</u>	32
<u>Quantity</u>	32
<u>RequestedLine</u>	33
<u>RequestedLines</u>	34
<u>RequestedLineUID</u>	34
<u>RequestedSearchCriteria</u>	35
<u>ResponseVerb</u>	35
<u>SearchRadius</u>	36
<u>SecondaryDealerNumber</u>	36
<u>Sender</u>	37
<u>SenderBase</u>	40
<u>ServiceId</u>	41
<u>ShipPart</u>	41
<u>Show</u>	42
<u>ShowPartsLocator</u>	43
<u>ShowPartsLocatorDataArea</u>	44
<u>Signature</u>	45
<u>SuggestedRetailPrice</u>	46
<u>SupplierItemId</u>	46
<u>SupplyingParties</u>	47
<u>SupplyingPartyLocation</u>	47
<u>SupplyingPartyLocations</u>	48
<u>SupplyingPartyLocationUID</u>	49

SupplyingPartyUID	49
UID	50
Verb	50
.....	
.....	
AddressLine	50
AvailabilityStatus	51
ChildLinePricingAppliesInd	51
ChildLineReasonCode	52
City	52
ClassCode	52
Code	53
ConfirmType	53
ContactTelephoneNumberOrganizationDescription	53
ContactTime	54
Country	54
County	66
Currency	66
Date	74
DateTime	74
DealerName	74
Department	75
DepartmentType	75
DistrictCode	75
DocumentDateTime	75
HazmatInd	76
Indicator	76
Language	76
LastInventoryDate	83
LastSoldDate	83
LineNumber	84
LocatorCode	84

Name	84
Note	84
OrganizationName	85
PartClass	85
PartType	85
PartyName	86
PartyType	86
PostalCode	86
PreferredContactMethodOrganization	87
PriceExplanation	87
Reference	88
ReferenceNumber	88
RequestedSearchCriteriaType	88
SalesPersonName	89
SecondaryPassword	89
SelectionMethod	89
ShortMfg	89
StateOrProvince	90
StatusCode	90
StatusText	91
StatusType	92
SystemVersion	92
Text	92
UOM	93
UrbanizationCode	94
URI	94
ZoneCode	95
Fields and Global Attributes	96
ApplicationArea	96
Header	96
LocatedLines	97
PartsLocator	98
RequestedLines	100

Show	100
ShowPartsLocator	101
SupplyingParties	101
SupplyingPartyLocations	102
Verb	102

Show Parts Locator

Show Parts Locator Guidelines

Overview

This document is a guideline on how to use the Show Parts Locator Business Object Document (BOD). Show Parts Locator has been defined in the context of STAR for the Automotive Retail Industry. The scope of this BOD is to define the Show Parts Locator process for individual consumers who service their automobiles through their OEM's authorized Dealers. The focus is on Dealer and OEM interactions, not third party organizations. NOTE: Although this is the traditional use of the Show Parts Locator, this BOD could be used to send Show Parts Locator information between any two business parties.

Implementation Guidelines provide detailed information regarding the structure and meaning of the Show Parts Locator BOD and corresponds directly to the Show Parts Locator schema. In addition to structure and meaning, the Implementation Guidelines identify various business rules for specific fields/components that due to their nature, i.e. field interdependence, are not possible to express using schema. Please note that although these business rules are not included in the schema, they **MUST** be followed to be STAR Compliant. Therefore, the Show Parts Locator Implementation Guidelines must be used in concert with the Show Parts Locator schema during development and should **NOT** be considered a supplement or substitution to the schema. For more information regarding STAR XML Data Compliance, please review the STAR Data Compliance Guidelines document located on the STAR Web site.

For a copy of the corresponding Show Parts Locator schema, please download the appropriate STAR schema repository from the XML portion of the STAR website (www.starstandard.org). Prior to downloading the schema, users are encouraged to download the STAR XML Reference/Implementation document also located on the XML portion of the STAR website. This document provides an overview of the STAR BOD development methodology, how to download and read STAR schema, and various frequently asked questions related to the implementation of STAR BODs.

STAR has followed the Open Application Group's Business Object Document methodology to develop the Show Parts Locator BOD. Where possible, STAR has mapped to existing OAGI fields and components. Note however that the STAR Show Parts Locator BOD is unique to the Retail Automotive industry and is not an extension of any existing OAGIS BODs.

For more information on the Open Applications Group's BODs and related documentation please refer to the Open Applications Group's Web site at (www.openapplications.org).

Schema Field Usage

STAR uses the same Noun in the schema for all the Noun/Verb combinations of the Show Parts Locator except the Get verb. Please refer to each Noun/Verb combination within this document to understand the requirements for each specific BOD. Although the Noun will always have every field defined for the Noun in the schema, each Noun/Verb combination may not use all of the fields. If a field is not used by a BOD, it will be noted in the business rules.

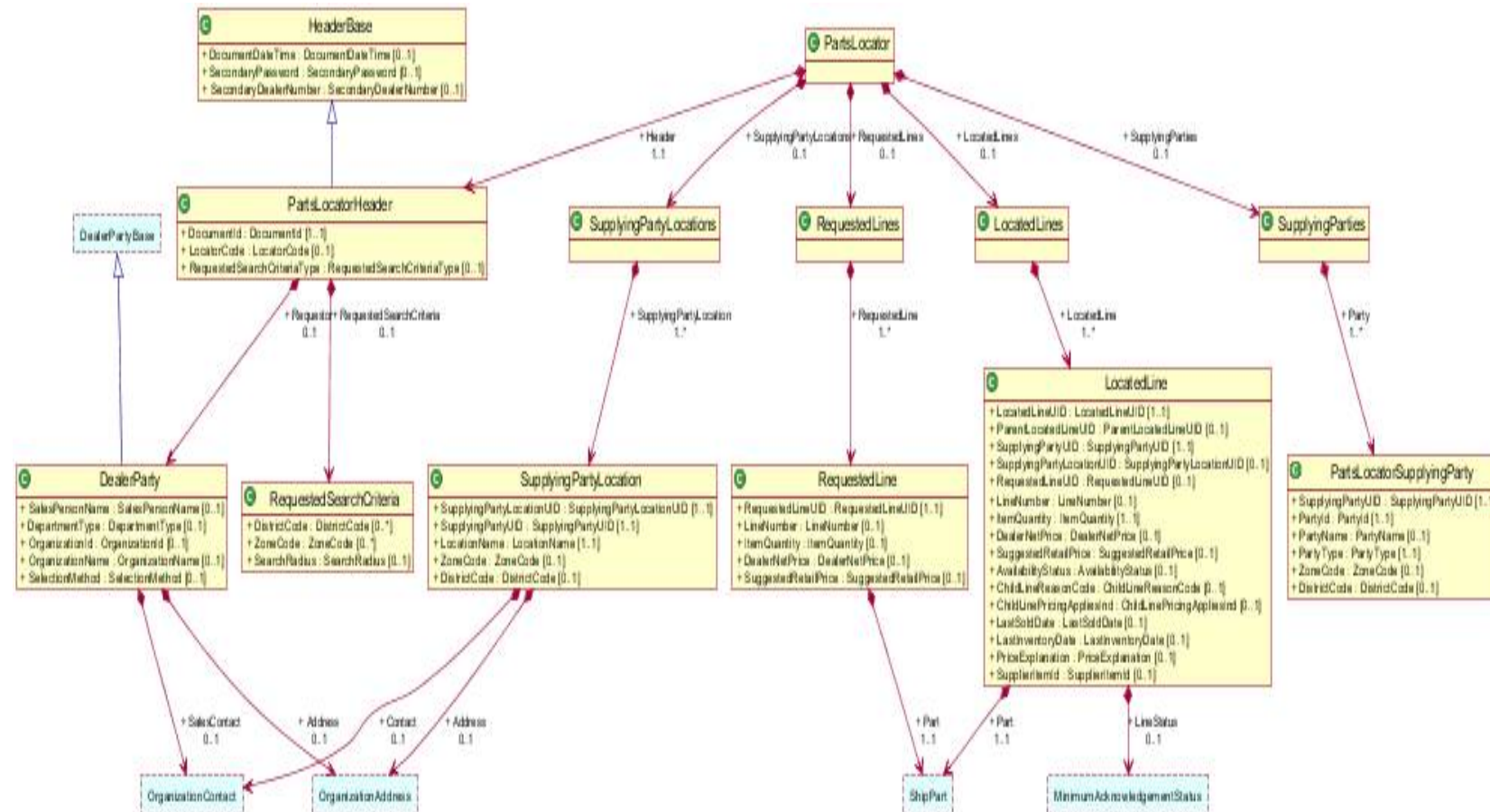
Business Scenario

Show Parts Locator

The Parts Locator Binary Collaboration starts with the transmission of a Parts Locator from the Dealer to the OEM. In response, the OEM may send Parts Locator information back to the Dealer acknowledging the requested parts, identifying backordered items, etc. This process occurs on demand as is needed. Note: This scenario is an example of how the Parts Locator BOD can be used. Implementations may vary.

Relationship Diagram

The following is a representation of the Noun for this BOD. It is a high level overview provided to give an idea of the hierarchy of the Noun's components.



Schema Document Properties

Declared Namespaces

A schema can contain more than one namespace. According to Whatis.com, "In general, a namespace uniquely identifies a set of names so that there is no ambiguity when objects having different origins but the same names are mixed together." An example would be two namespaces that both defined an element called ID, without a namespace it would be impossible to determine which definition was being used.

Prefix	Namespace
Default namespace	http://www.starstandards.org/STAR
xml	http://www.w3.org/XML/1998/namespace
star	http://www.starstandards.org/STAR
xsd	http://www.w3.org/2001/XMLSchema

Components and Data Types

Global definitions include components, code lists, and data types. Components are used to build the data structures that make up a Noun and it's requirements. Data types specify the type of data that a component's fields may contain. Not all definitions are included in this documentation. Please see either the STAR Code List guideline or Data Type Guidelines for further information.

AddressBase

Name	AddressBase
Abstract	no

Data Elements and Components

Field / Component	Description	R/O	Business Rule
AddressLine	Indicates the multiple lines of an address. The first line is typically the street name and number.	R	
City	Is the City of the Address.	R	
County	County in which the Address is in.	O	
StateOrProvince	Is the State or Province of a given Address.	R	Reference valid value rule USPS
Country	Country in which the Address is in.	R	
PostalCode	Postal Code of the Address.	R	Reference valid value rule USPS

XML Instance Representation

```
<...>
  <AddressLine> AddressLine </AddressLine> [1..*]
  <City> City </City> [1]
  <County> County </County> [0..1]
  <StateOrProvince> StateOrProvince </StateOrProvince> [1]
  <Country> Country </Country> [1]
  <PostalCode> PostalCode </PostalCode> [1]
```

Show Parts Locator

```
</...>
```

Amount

Based on OAGI Amount. Simple content with the currency as an attribute

Name	Amount
Abstract	no

Attributes

Field / Component	Description	R/O	Business Rule
currency		R	

XML Instance Representation

```
<...  
currency="Currency [1]">  
  xsd:decimal  
</...>
```

ApplicationArea

These field(s) use this type: ApplicationArea.

Name	ApplicationArea
Abstract	no

Data Elements and Components

Field / Component	Description	R/O	Business Rule
Sender	Identifies characteristics and control identifiers that relate to the application that created the Business Object Document. The sender area can indicate the logical location of the application and/or database server, the application, and the task that was processing to create the BOD.	R	

Show Parts Locator

Field / Component	Description	R/O	Business Rule
CreationDateTime	is the date time stamp that the given instance of the Business Object Document was created. This date must not be modified during the life of the Business Object Document.	R	DateTime fields must be formatted as XML Schema Datetimes in UTC/GMT format without offsets. Example: 2003-11-05T13:15:30Z
Signature	If the BOD is to be signed the signature element is included, otherwise it is not. Signature supports any digital signature that maybe used by an implementation of OAGIS. The qualifyingAgency identifies the agency that provided the format for the signature. This element supports any digital signature specification that is available today and in the future. This is accomplished by not actually defining the content but by allowing the implementation to specify the digital signature to be used via an external XML Schema namespace declaration. The Signature element is defined to have any content from any other namespace. This allows the user to carry a digital signature in the xml instance of a BOD. The choice of which digital signature to use is left up to the user and their integration needs.	O	
BODId	The BODId provides a place to carry a Globally Unique Identifier (GUID) that will make each Business Object Document instance uniquely identifiable. This is a critical success factor to enable software developers to use the Globally Unique Identifier (GUID) to build the following services or capabilities: 1. Legally binding transactions, 2. Transaction logging, 3. Exception handling, 4. Re-sending, 5. Reporting, 6. Confirmations, 7. Security.	O	
Destination	Information related to the receiver of the BOD	R	

XML Instance Representation

```
<...>
  <Sender> Sender </Sender> [1]
  <CreationDateTime> DateTime </CreationDateTime> [1]
  <Signature> Signature </Signature> [0..1]
  <BODId> Code </BODId> [0..1]
  <Destination> Destination </Destination> [1]
</...>
```

Show Parts Locator

BusinessObjectDocument

Name	BusinessObjectDocument
Abstract	no

Attributes

Field / Component	Description	R/O	Business Rule
revision	This should contain the STAR repository version in the following recommended format. 4.2.1_M20080416. Where the first part indicates the version of the STAR repository and anything after the _ indicates the Milestone build that is being used. If referring to an official published version then only the STAR Repository version is required.	O	
release	Indicates the OAGIS release that this BOD belongs.	O	
environment	Indicates whether this BOD is being sent in a "Test" or a "Production" mode. If the BOD is being sent in a test mode, it's information should not affect the business operation. However, if the BOD is sent in "Production" mode it is assumed that all test has been complete and the contents of the BOD are to affect the operation of the receiving business application(s).	O	
lang	Indicates the language that the contents of the BOD is in unless otherwise stated.	O	
bodVersion	Deprecated as of STAR 4.2.2. It is recommended to use the revision attribute to identify the repository and the noun. May be removed in a new major version of the STAR repository. Indicates the version number of the BOD.	O	

Data Elements and Components

Show Parts Locator

Field / Component	Description	R/O	Business Rule
ApplicationArea	Provides the information that an application may need to know in order to communicate in an integration of two or more business applications. The ApplicationArea is used at the applications layer of communication. While the integration frameworks web services and middleware provide the communication layer that OAGIS operates on top of. Provides the information that an application may need to know in order to communicate in an integration of two or more business applications. The ApplicationArea is used at the applications layer of communication. While the integration frameworks web services and middleware provide the communication layer that OAGIS operates on top of.	R	

XML Instance Representation

```
<...  
revision="Text [0..1]"  
release="8.1-Lite [0..1]"  
environment="Text [0..1]"  
lang="Language [0..1]"  
bodVersion="Text [0..1]">  
  <ApplicationArea> ... </ApplicationArea> [1]  
</...>
```

ConfirmableVerb

Name	ConfirmableVerb
Abstract	no

Attributes

Field / Component	Description	R/O	Business Rule
confirm		R	

Data Elements and Components

Show Parts Locator

Field / Component	Description	R/O	Business Rule
Verb		R	

XML Instance Representation

```
<...  
confirm="ConfirmType [0..1]"/>
```

DealerNetPrice

These field(s) use this type: DealerNetPrice,DealerNetPrice.

Dealer net price of the individual part for the quantity indicated.

Name	DealerNetPrice
Abstract	no

XML Instance Representation

```
<...  
currency="Currency [1]">  
  Amount  
</...>
```

DealerParty

These field(s) use this type: Requestor.

Name	DealerParty
Abstract	no

Data Elements and Components

Field / Component	Description	R/O	Business Rule
PartyId	Party Identification Number	O	

Show Parts Locator

Field / Component	Description	R/O	Business Rule
DealerName	Dealer name	O	
DistrictCode	Manufacturer Assigned District Code	O	
URI	Dealer URI	O	
ZoneCode	Manufacturer Assigned Zone Code	O	
Address	Dealer party address	O	
SalesContact	Dealer party contact information	O	
SalesPersonName	Name of Salesperson. Format for name should be "First Last" with no commas between first and last name	O	
DepartmentType	Identifies the internal department	O	
OrganizationId	Member Identification number of affiliate organization	O	
OrganizationName	OrganizationName	O	
SelectionMethod	Method used to select dealer Example: PF for preferred, PM for PMA, DI for distance, etc.	O	

XML Instance Representation

```
<...>
  <PartyId> PartyId </PartyId> [0..1]
  <DealerName> DealerName </DealerName> [0..1]
  <DistrictCode> DistrictCode </DistrictCode> [0..1]
  <URI> URI </URI> [0..1]
  <ZoneCode> ZoneCode </ZoneCode> [0..1]
  <Address> OrganizationAddress </Address> [0..1]
  <SalesContact> OrganizationContact </SalesContact> [0..1]
  <SalesPersonName> SalesPersonName </SalesPersonName> [0..1]
  <DepartmentType> DepartmentType </DepartmentType> [0..1]
  <OrganizationId> OrganizationId </OrganizationId> [0..1]
  <OrganizationName> OrganizationName </OrganizationName> [0..1]
  <SelectionMethod> SelectionMethod </SelectionMethod> [0..1]
</...>
```

Show Parts Locator

DealerPartyBase

Name	DealerPartyBase
Abstract	no

Data Elements and Components

Field / Component	Description	R/O	Business Rule
PartyId	Party Identification Number	O	
DealerName	Dealer name	O	
DistrictCode	Manufacturer Assigned District Code	O	
URI	Dealer URI	O	
ZoneCode	Manufacturer Assigned Zone Code	O	

XML Instance Representation

```
<...>
  <PartyId> PartyId </PartyId> [0..1]
  <DealerName> DealerName </DealerName> [0..1]
  <DistrictCode> DistrictCode </DistrictCode> [0..1]
  <URI> URI </URI> [0..1]
  <ZoneCode> ZoneCode </ZoneCode> [0..1]
</...>
```

Description

Description

Name	Description
Abstract	no

Show Parts Locator

Attributes

Field / Component	Description	R/O	Business Rule
language	The ISO language code that the description is written.	O	

XML Instance Representation

```
<...  
language="Language [0..1]">  
  xsd:string  
</...>
```

Destination

These field(s) use this type: **Destination**.

Name	Destination
Abstract	no

Data Elements and Components

Field / Component	Description	R/O	Business Rule
DestinationNameCode	Code for destination of file (i.e.Short Manufacturer or DSP code)	O	Must use a valid code from the ShortMfg/RSP list on http://www.starstandards.org
DestinationURI	Physical address of the destination	O	
DestinationSoftwareCode	Additional information about the destination application	O	
DestinationSoftware	For which software destination file is intended (may not be known).	O	
DealerNumber	Target Dealer Code receiving information	O	
StoreNumber	Dealer code store number (DMS assigned)	O	
AreaNumber	Dealer code area number (DMS vendor assigned)	O	

Show Parts Locator

Field / Component	Description	R/O	Business Rule
DealerCountry	Target Dealer country location	O	
PartyId	The Party Id field uniquely identifies the Receiver of the message. This element can be used for parties within the Automotive Community as well as external parties. Party Id is not intended as a replacement for the Dealer Number. Suggested formats for OEMs or other large institutions include: DUNs Number, ShortMfgCode + DUNs, or ShortMfgCode. The suggested format for Dealers is: ShortMfgCode+Dealer Number.	O	
LocationId	The Location Id field uniquely identifies the location of the Receiver of a message. This Id may be aligned with a physical address or data centers. This field provides an additional level of granularity beyond the usage of the Party Id for additional routing and deliver of data.		
ServiceId	The Service Id field identifies the particular service to which a message is being sent, e.g., an inventory service.	O	

XML Instance Representation

```
<...>
  <DestinationNameCode> ShortMfg </DestinationNameCode> [0..1]
  <DestinationURI> URI </DestinationURI> [0..1]
  <DestinationSoftwareCode> Text </DestinationSoftwareCode> [0..1]
  <DestinationSoftware> Text </DestinationSoftware> [0..1]
  <DealerNumber> PartyId </DealerNumber> [0..1]
  <StoreNumber> Text </StoreNumber> [0..1]
  <AreaNumber> Text </AreaNumber> [0..1]
  <DealerCountry> Country </DealerCountry> [0..1]
  <PartyId> PartyId </PartyId> [0..1]
  <LocationId> LocationId </LocationId> [0..1]
  <ServiceId> ServiceId </ServiceId> [0..1]
</...>
```

DocumentId

These field(s) use this type: **DocumentId**.

Is the identifier for the document.

Show Parts Locator

Name	DocumentId
Abstract	no

XML Instance Representation

```
<...>  
  Id  
</...>
```

HeaderBase

Used on all STAR BODs

Name	HeaderBase
Abstract	no

Data Elements and Components

Field / Component	Description	R/O	Business Rule
DocumentDateTime	Is the date and time the document was last created. This is not the date and time that the BOD message instance was created.	O	
SecondaryPassword	Secondary password used to validate access to the dealer information	O	
SecondaryDealerNumber	Identifies secondary dealer number if different than primary "Dealer Number"	O	

XML Instance Representation

```
<...>  
  <DocumentDateTime> DocumentDateTime </DocumentDateTime> [0..1]  
  <SecondaryPassword> SecondaryPassword </SecondaryPassword> [0..1]  
  <SecondaryDealerNumber> SecondaryDealerNumber </SecondaryDealerNumber> [0..1]  
</...>
```

Id

Show Parts Locator

These field(s) use this type: **AuthorizationId**.

Party Identification number

Name	Id
Abstract	no

XML Instance Representation

```
<...>  
  xsd:string  
</...>
```

ItemId

These field(s) use this type: **ItemId**.

Item part number

Name	ItemId
Abstract	no

XML Instance Representation

```
<...>  
  Id  
</...>
```

ItemIdDescription

These field(s) use this type: **ItemIdDescription**.

Item part number detail description

Name	ItemIdDescription
Abstract	no

Show Parts Locator

XML Instance Representation

```
<...  
  language="Language [0..1]">  
    Description  
</...>
```

ItemQuantity

These field(s) use this type: **ItemQuantity,ItemQuantity.**

Quantity of Part number.

Name	ItemQuantity
Abstract	no

XML Instance Representation

```
<...  
  uom="UOM [1]">  
    Quantity  
</...>
```

LocatedLine

These field(s) use this type: **LocatedLine.**

Represents the parts for which pricing and availability was determined.

Name	LocatedLine
Abstract	no

Data Elements and Components

Field / Component	Description	R/O	Business Rule
LocatedLineUID	A unique identifier of the record. This value should have no business meaning and serves the purpose as the primary key in this component.	R	

Show Parts Locator

Field / Component	Description	R/O	Business Rule
ParentLocatedLineUID	For a child LocatedLine, this value is equal to the LocatedLine.LocatedLineUID value of the parent LocatedLine.	O	
SupplyingPartyUID	This field identifies the supplying party for the located line and must be equal to one of the SupplyingParties.Party.SupplyingPartyUID values.	R	
SupplyingPartyLocationUID	The SupplyingPartyLocation.SupplyingPartyLocationUID of the supplying party's location. The combination of SupplyingPartyUID and SupplyingPartyLocationUID must equal one of the records in SupplyingPartyLocations. This field is only populated when the LocatedLine has no child lines.	O	
RequestedLineUID	Only populated for LocatedLine components that do not have a parent LocatedLine, this field represents the LineNumber of the RequestedLine for which the pricing/availability is for. Must be equal to one of the RequestedLine.LineNumber values.	O	
LineNumber	LocatedLine components in the BOD can be grouped by RequestedLineUID or ParentLocatedLineUID. The value of this field represents a unique identifier for a locatedLine within one of those groups. Within one of these groups, LineNumber values should start at 1 and increment by 1.	O	
Part	Represents informatoin about the part for which pricing/availability information is being provided.	R	
ItemQuantity	The quantity of the part with the AvailabilityStatus at the location/supplier indicated within this component.	R	
DealerNetPrice	The total price to purchase the entire quantity of parts indicated within this component.	O	
SuggestedRetailPrice	The MSRP to purchase the entire quantity of parts indicated within this component.	O	
AvailabilityStatus	Indicates the status of the part at the supplying location.	O	
ChildLineReasonCode	For LocatedLines which have children, this value indicates the reason the children exist.	O	
ChildLinePricingAppliesInd	For LocatedLines which have children, this value indicates whether the pricing of the part is given by the parent line or its children.	O	

Show Parts Locator

Field / Component	Description	R/O	Business Rule
LastSoldDate	The date the part was last sold.	O	
LastInventoryDate	The last date inventory was updated for this part.	O	
PriceExplanation	An explanatory note for the pricing.	O	
SupplierItemId	The OEM part number. If the part is sold by a distributor, this is not their OEM part number. Works in conjunction with PartManufacturer.		
LineStatus	The Line Status component provides a reason for the availability status of a part and may also provide additional information about the part. .	O	

XML Instance Representation

```
<...>
  <LocatedLineUID> LocatedLineUID </LocatedLineUID> [1]
  <ParentLocatedLineUID> ParentLocatedLineUID </ParentLocatedLineUID> [0..1]
  <SupplyingPartyUID> SupplyingPartyUID </SupplyingPartyUID> [1]
  <SupplyingPartyLocationUID> SupplyingPartyLocationUID </SupplyingPartyLocationUID> [0..1]
  <RequestedLineUID> RequestedLineUID </RequestedLineUID> [0..1]
  <LineNumber> LineNumber </LineNumber> [0..1]
  <Part> ShipPart </Part> [1]
  <ItemQuantity> ItemQuantity </ItemQuantity> [1]
  <DealerNetPrice> DealerNetPrice </DealerNetPrice> [0..1]
  <SuggestedRetailPrice> SuggestedRetailPrice </SuggestedRetailPrice> [0..1]
  <AvailabilityStatus> AvailabilityStatus </AvailabilityStatus> [0..1]
  <ChildLineReasonCode> ChildLineReasonCode </ChildLineReasonCode> [0..1]
  <ChildLinePricingAppliesInd> ChildLinePricingAppliesInd </ChildLinePricingAppliesInd> [0..1]
  <LastSoldDate> LastSoldDate </LastSoldDate> [0..1]
  <LastInventoryDate> LastInventoryDate </LastInventoryDate> [0..1]
  <PriceExplanation> PriceExplanation </PriceExplanation> [0..1]
  <SupplierItemId> SupplierItemId </SupplierItemId> [0..1]
  <LineStatus> MinimumAcknowledgementStatus </LineStatus> [0..1]
</...>
```

LocatedLines

These field(s) use this type: **LocatedLines**.

Show Parts Locator

Represents the parts for which pricing and availability is being requested.

Name	LocatedLines
Abstract	no

Data Elements and Components

Field / Component	Description	R/O	Business Rule
LocatedLine	Represents the parts for which pricing and availability was determined.	R	

XML Instance Representation

```
<...>
  <LocatedLine> LocatedLine </LocatedLine> [1..*]
</...>
```

LocatedLineUID

These field(s) use this type: LocatedLineUID.

A unique identifier of the record. This value should have no business meaning and serves the purpose as the primary key in this component.

Name	LocatedLineUID
Abstract	no

XML Instance Representation

```
<...>
  UID
</...>
```

LocationId

These field(s) use this type: LocationId,LocationId.

Code identifying a physical location

Name	LocationId
-------------	-------------------

Show Parts Locator

Abstract	no
-----------------	----

XML Instance Representation

```
<...>  
  Id  
</...>
```

LocationName

These field(s) use this type: LocationName.

A name to identify the location.

Name	LocationName
Abstract	no

XML Instance Representation

```
<...  
language="Language [0..1]">  
  Description  
</...>
```

MinimumAcknowledgementStatus

These field(s) use this type: LineStatus.

Name	MinimumAcknowledgementStatus
Abstract	no

Data Elements and Components

Field / Component	Description	R/O	Business Rule
StatusType	Defines the type of status that occurred. EX: S-Success, E-Error, W-Warning, I-Info, A-Abort	O	

Show Parts Locator

Field / Component	Description	R/O	Business Rule
StatusCode	A code identifying the reason for the status message.	O	
StatusText	Descriptive status text.	O	

XML Instance Representation

```
<...>  
  <StatusType> StatusType </StatusType> [0..1]  
  <StatusCode> StatusCode </StatusCode> [0..1]  
  <StatusText> StatusText </StatusText> [0..1]  
</...>
```

OrganizationAddress

These field(s) use this type: Address,Address.

Name	OrganizationAddress
Abstract	no

Data Elements and Components

Field / Component	Description	R/O	Business Rule
AddressLine	Indicates the multiple lines of an address. The first line is typically the street name and number.	R	
City	Is the City of the Address.	R	
County	County in which the Address is in.	O	
StateOrProvince	Is the State or Province of a given Address.	R	Reference valid value rule USPS
Country	Country in which the Address is in.	R	
PostalCode	Postal Code of the Address.	R	Reference valid value rule USPS
UrbanizationCode	Geographic definition of a metropolitan or suburban area	O	

Show Parts Locator

XML Instance Representation

```
<...>
  <AddressLine> AddressLine </AddressLine> [1..*]
  <City> City </City> [1]
  <County> County </County> [0..1]
  <StateOrProvince> StateOrProvince </StateOrProvince> [1]
  <Country> Country </Country> [1]
  <PostalCode> PostalCode </PostalCode> [1]
  <UrbanizationCode> UrbanizationCode </UrbanizationCode> [0..1]
</...>
```

OrganizationContact

These field(s) use this type: **SalesContact,Contact.**

Name	OrganizationContact
Abstract	no

Data Elements and Components

Field / Component	Description	R/O	Business Rule
PersonName	Contact name	O	
Telephone	Contact telephone numbers	O	If the address has a North American country code, the telephone number must be a minimum of 10 numbers.
EMailAddress	Contact Email address	O	Should conform to the Internet message format as set forth by RFC 8822.
Fax	Contact Fax number	O	If the address has a North American country code, the telephone number must be a minimum of 10 numbers.
PreferredContactMethod	Preferred contact method	O	

Show Parts Locator

Field / Component	Description	R/O	Business Rule
ContactTime	Preferred contact time (i.e. Best day/time to reach the contact.	O	

XML Instance Representation

```
<...>
  <PersonName> OrganizationContactPersonName </PersonName> [0..1]
  <Telephone> OrganizationPartyTelephone </Telephone> [0..*]
  <EMailAddress> OrganizationPartyEmail </EMailAddress> [0..*]
  <Fax> OrganizationPartyFax </Fax> [0..*]
  <PreferredContactMethod> PreferredContactMethodOrganization </PreferredContactMethod> [0..1]
  <ContactTime> ContactTime </ContactTime> [0..1]
</...>
```

OrganizationContactPersonName

These field(s) use this type: PersonName.

Derived from oa:PersonName

Name	OrganizationContactPersonName
Abstract	no

Data Elements and Components

Field / Component	Description	R/O	Business Rule
GivenName	First Name of business party	R	
FamilyName	Last Name of business party	R	
FormattedName	Full Name of business party. Format for name should be "First Last" with no commas between first and last name	O	

XML Instance Representation

```
<...>
  <GivenName> Name </GivenName> [1]
  <FamilyName> Name </FamilyName> [1]
```


Show Parts Locator

```
<FormattedName> Name </FormattedName> [0..1]
</...>
```

OrganizationId

These field(s) use this type: **OrganizationId**.

Member Identification number of affiliate organization

Name	OrganizationId
Abstract	no

XML Instance Representation

```
<...>
  Id
</...>
```

OrganizationPartyEmail

These field(s) use this type: **EMailAddress**.

Organization email

Name	OrganizationPartyEmail
Abstract	no

XML Instance Representation

```
<...>
  xsd:string
</...>
```

OrganizationPartyFax

These field(s) use this type: **Fax**.

OrganizationFax number

Show Parts Locator

Name	OrganizationPartyFax
Abstract	no

XML Instance Representation

```
<...>  
  xsd:string  
</...>
```

OrganizationPartyTelephone

These field(s) use this type: Telephone.

OrganizationParty telephone number

Name	OrganizationPartyTelephone
Abstract	no

Attributes

Field / Component	Description	R/O	Business Rule
desc		R	
exten		R	

XML Instance Representation

```
<...  
desc="ContactTelephoneNumberOrganizationDescription [0..1]"  
exten="Note [0..1]">  
  xsd:string  
</...>
```

ParentLocatedLineUID

These field(s) use this type: ParentLocatedLineUID.

Show Parts Locator

For a child LocatedLine, this value is equal to the LocatedLine.LocatedLineUID value of the parent LocatedLine.

Name	ParentLocatedLineUID
Abstract	no

XML Instance Representation

```
<...>  
  UID  
</...>
```

PartManufacturer

These field(s) use this type: **PartManufacturer**.

Identifies the part manufacturer.

Name	PartManufacturer
Abstract	no

XML Instance Representation

```
<...  
language="Language [0..1]">  
  Description  
</...>
```

PartsBase

Name	PartsBase
Abstract	no

Data Elements and Components

Field / Component	Description	R/O	Business Rule
ItemId	Item part number identifier	O	

Show Parts Locator

Field / Component	Description	R/O	Business Rule
ItemIdDescription	Item part number detail description	O	
PartType	Specifies whether the parts are indicated by manufacturer part code or Part Number	O	
SupplierItemId	Supplier identification of part on order.	O	

XML Instance Representation

```
<...>
  <ItemId> ItemId </ItemId> [0..1]
  <ItemIdDescription> ItemIdDescription </ItemIdDescription> [0..1]
  <PartType> PartType </PartType> [0..1]
  <SupplierItemId> SupplierItemId </SupplierItemId> [0..1]
</...>
```

PartsLocator

These field(s) use this type: **PartsLocator**.

STAR Version 3.0 - Draft

STAR Version 2.1, STAR approved 04/20/2005; effective date 07/04/2005

STAR Version 2.0, STAR approved 05/07/2004; effective date 07/04/2004

STAR Version 1.0, STAR approved 10/4/2002; OAGI approved 10/17/2002; effective date 1/01/2003

Name	PartsLocator
Abstract	no

Data Elements and Components

Field / Component	Description	R/O	Business Rule
Header	The Header component represents summary information for the entire Parts Locator.	R	
RequestedLines	Represents the parts for which pricing and availability is being requested.	O	

Show Parts Locator

Field / Component	Description	R/O	Business Rule
LocatedLines	Represents the parts for which pricing and availability was determined.	O	
SupplyingParties	Represents the parties that have the requested part(s) available.	O	
SupplyingPartyLocations	Represents the locations of the available part(s). This could be a Parts Distribution Center (PDC) or a dealership location.	O	

XML Instance Representation

```
<...>
  <Header> ... </Header> [1]
  <RequestedLines> ... </RequestedLines> [0..1]
  <LocatedLines> ... </LocatedLines> [0..1]
  <SupplyingParties> ... </SupplyingParties> [0..1]
  <SupplyingPartyLocations> ... </SupplyingPartyLocations> [0..1]
</...>
```

PartsLocatorHeader

These field(s) use this type: **Header.**

.

Name	PartsLocatorHeader
Abstract	no

Data Elements and Components

Field / Component	Description	R/O	Business Rule
DocumentDateTime	Is the date and time the document was last created. This is not the date and time that the BOD message instance was created.	O	
SecondaryPassword	Secondary password used to validate access to the dealer information	O	
SecondaryDealerNumber	Identifies secondary dealer number if different than primary "Dealer Number"	O	
DocumentId	The primary DocumentId of the document for the given content.	R	

Show Parts Locator

Field / Component	Description	R/O	Business Rule
LocatorCode	Identifies the type of locator transaction being used.	O	
RequestedSearchCriteriaType	Defines whether the search applies to dealers, suppliers, or both dealers and suppliers.	O	
RequestedSearchCriteria	Represents information about the search criteria being defined for all requested lines.	O	
Requestor	Represents information about the party requesting the part(s).	O	

XML Instance Representation

```
<...>
  <DocumentDateTime> DocumentDateTime </DocumentDateTime> [0..1]
  <SecondaryPassword> SecondaryPassword </SecondaryPassword> [0..1]
  <SecondaryDealerNumber> SecondaryDealerNumber </SecondaryDealerNumber> [0..1]
  <DocumentId> DocumentId </DocumentId> [1]
  <LocatorCode> LocatorCode </LocatorCode> [0..1]
  <RequestedSearchCriteriaType> RequestedSearchCriteriaType </RequestedSearchCriteriaType> [0..1]
  <RequestedSearchCriteria> RequestedSearchCriteria </RequestedSearchCriteria> [0..1]
  <Requestor> DealerParty </Requestor> [0..1]
</...>
```

PartsLocatorSupplyingParty

These field(s) use this type: **Party**.

The PartsLocatorSupplyingParty represents a party that has the availability information on the requested part(s).

Name	PartsLocatorSupplyingParty
Abstract	no

Data Elements and Components

Field / Component	Description	R/O	Business Rule
SupplyingPartyUID	This field identifies the supplying party for the located line and must be equal to one of the SupplyingParties.Party.SupplyingPartyUID values.	R	

Show Parts Locator

Field / Component	Description	R/O	Business Rule
PartyId	An logical identifier for the Party. This would either be a Short Manufacturer Code for the OEM or aftermarket distributor, or a dealer number.	R	
PartyName	The name of the Party. The Party in the context of a Parts Locator is either a dealer, OEM supplier, or aftermarket distributor.	O	
PartyType	Identifies if the supplier is a dealer or a supplier (OEM or aftermarket distributor).	R	
ZoneCode	For dealers only, identifies the dealer's supplier defined zone code.	O	
DistrictCode	For dealers only, identifies the dealer's supplier defined district code.	O	

XML Instance Representation

```
<...>
  <SupplyingPartyUID> SupplyingPartyUID </SupplyingPartyUID> [1]
  <PartyId> PartyId </PartyId> [1]
  <PartyName> PartyName </PartyName> [0..1]
  <PartyType> PartyType </PartyType> [1]
  <ZoneCode> ZoneCode </ZoneCode> [0..1]
  <DistrictCode> DistrictCode </DistrictCode> [0..1]
</...>
```

PartyBase

Derived from oa:Party

Name	PartyBase
Abstract	no

Data Elements and Components

Field / Component	Description	R/O	Business Rule
PartyId	Party Identification Number	O	

Show Parts Locator

XML Instance Representation

```
<...>  
  <PartyId> PartyId </PartyId> [0..1]  
</...>
```

PartyId

These field(s) use this type: DealerNumber,PartyId,DealerNumber,PartyId,PartyId,PartyId.

Party Identification Number

Name	PartyId
Abstract	no

XML Instance Representation

```
<...>  
  Id  
</...>
```

Quantity

A decimal value with uom

Name	Quantity
Abstract	no

Attributes

Field / Component	Description	R/O	Business Rule
uom		R	

XML Instance Representation

```
<...  
uom="UOM [1]">
```


Show Parts Locator

xsd:decimal
</...>

RequestedLine

These field(s) use this type: **RequestedLine**.

Represents the parts for which pricing and availability is being requested.

Name	RequestedLine
Abstract	no

Data Elements and Components

Field / Component	Description	R/O	Business Rule
RequestedLineUID	Only populated for LocatedLine components that do not have a parent LocatedLine, this field represents the LineNumber of the RequestedLine for which the pricing/availability is for. Must be equal to one of the RequestedLine.LineNumber values.	R	
LineNumber	An identifier for the line as assigned by the requesting party. Must be unique among all other RequestedLine.LineNumber values. Must be an integer. Smallest value must be 1 with other values being consecutive integers.	O	
Part	Represents information about the part for which pricing/availability information is being provided.	R	
ItemQuantity	The quantity of the part requested.	O	
DealerNetPrice	The expected net price for the quantity requested. If quantity was not provided, the expected net price for a quantity of 1 "ea". May be used by the supplying party to resolve ambiguous part numbers.	O	(INACTIVE) This component is only to be used in: GetPartsLocator
SuggestedRetailPrice	The expected suggested retail price for the quantity requested. If quantity was not provided, the expected suggested retail price for a quantity of 1 "ea". May be used by the supplying party to resolve ambiguous part numbers.	O	(INACTIVE) This component is only to be used in: GetPartsLocator

Show Parts Locator

XML Instance Representation

```
<...>
  <RequestedLineUID> RequestedLineUID </RequestedLineUID> [1]
  <LineNumber> LineNumber </LineNumber> [0..1]
  <Part> ShipPart </Part> [1]
  <ItemQuantity> ItemQuantity </ItemQuantity> [0..1]
  <DealerNetPrice> DealerNetPrice </DealerNetPrice> [0..1]
  <SuggestedRetailPrice> SuggestedRetailPrice </SuggestedRetailPrice> [0..1]
</...>
```

RequestedLines

These field(s) use this type: **RequestedLines**.

Represents the parts for which pricing and availability is being requested.

Name	RequestedLines
Abstract	no

Data Elements and Components

Field / Component	Description	R/O	Business Rule
RequestedLine	Represents a part for which pricing and availability is being requested.	R	

XML Instance Representation

```
<...>
  <RequestedLine> RequestedLine </RequestedLine> [1..*]
</...>
```

RequestedLineUID

These field(s) use this type: **RequestedLineUID, RequestedLineUID**.

Only populated for LocatedLine components that do not have a parent LocatedLine, this field represents the LineNumber of the RequestedLine for which the pricing/availability is for. Must be equal to one of the RequestedLine.LineNumber values.

Show Parts Locator

Name	RequestedLineUID
Abstract	no

XML Instance Representation

```
<...>
  UID
</...>
```

RequestedSearchCriteria

These field(s) use this type: **RequestedSearchCriteria.**

Represents information about the search criteria being defined for all requested lines.

Name	RequestedSearchCriteria
Abstract	no

Data Elements and Components

Field / Component	Description	R/O	Business Rule
DistrictCode	The dealer districts to search when searching specific dealers by district.	O	
ZoneCode	The dealer zones to search when searching specific dealers by zone.	O	
SearchRadius	The search radius based on the searching party's location.	O	

XML Instance Representation

```
<...>
  <DistrictCode> DistrictCode </DistrictCode> [0..*]
  <ZoneCode> ZoneCode </ZoneCode> [0..*]
  <SearchRadius> SearchRadius </SearchRadius> [0..1]
</...>
```

ResponseVerb

Show Parts Locator

Name	ResponseVerb
Abstract	no

Data Elements and Components

Field / Component	Description	R/O	Business Rule
Verb		R	
OriginalBODId		O	

XML Instance Representation

```
<...  
confirm="ConfirmType [0..1]">  
  <OriginalBODId> xsd:NMTOKEN </OriginalBODId> [0..1]  
</...>
```

SearchRadius

These field(s) use this type: SearchRadius.

The search radius based on the searching party's location.

Name	SearchRadius
Abstract	no

XML Instance Representation

```
<...  
uom="UOM [1]">  
  Quantity  
</...>
```

SecondaryDealerNumber

These field(s) use this type: SecondaryDealerNumber.

Show Parts Locator

Identifies secondary dealer number if different than primary "Dealer Number"

Name	SecondaryDealerNumber
Abstract	no

XML Instance Representation

```
<...>  
  Id  
</...>
```

Sender

These field(s) use this type: Sender.

Name	Sender
Abstract	no

Data Elements and Components

Field / Component	Description	R/O	Business Rule
LogicalId	Provides the logical location of the server and applications from which the Business Object Document originated. It can be used to establish a logical to physical mapping, however its use is optional. Each system or combination of systems should maintain an external central reference table containing the logical names or logical addresses of the application systems in the integration configuration. This enables the logical names to be mapped to the physical network addresses of the resources needed on the network. Note: The technical implementation of this Domain Naming Service is not dictated by this specification. This logical to physical mapping may be done at execution time by the application itself or by a middleware transport mechanism, depending on the integration architecture used. This provides for a simple but effective directory access capability while maintaining application independence from the physical location of those resources on the network	O	

Show Parts Locator

Field / Component	Description	R/O	Business Rule
Component	Provides a finer level of control than Logical Identifier and represents the business application that issued the Business Object Document. Its use is optional. For STAR's use this is the DCS Software code name		
Task	Describes the business event that initiated the need for the Business Object Document to be created. For STAR, the task is defined in the Implementation Guidelines for each BOD. It is usually a short description of the BOD. Ex: SalesLead, CreditDecision, etc.	R	
ReferenceId	Enables the sending application to indicate the instance identifier of the event or task that caused the BOD to be created. This is used to correlate a response BOD to an originating BOD	O	
AuthorizationId	Identifies the authorization level of the user or application that is sending the Business Object Document Message. This authorization level being recognized by the receiving system indicates what can be done on the receiving system. For STAR, this is the User ID.	O	
CreatorNameCode	DCS Software Creator Code	R	
SenderNameCode	Additional information about the sending platform (i.e., Short MFG or DSP code).	R	Must use a valid code from the ShortMfg/RSP list on http://www.starstandards.org
SenderURI	Physical address of the sender	O	
DealerNumber	Dealer Code of source of information	O	
StoreNumber	Dealer code store number (DMS assigned)	O	
AreaNumber	Dealer code area number (DMS vendor assigned)	O	
DealerCountry	Source Dealer country location	O	
Language	This code is used to define the language of the data used in this transaction	O	
DeliverPendingMailInd	Indicates if the user requests to receive pending mail that has been stored and has yet not been delivered yet. By selecting 0, the user will only receive the response for the current transaction the user is performing.	O	

Show Parts Locator

Field / Component	Description	R/O	Business Rule
Password	Token for application specific authentication. Used to authenticate dealership/users through application specific security	O	
SystemVersion	The sender's software version number.	O	
PartyId	The Party Id field uniquely identifies the Sender of the message. This element can be used for parties within the Automotive Community as well as external parties. Party Id is not intended as a replacement for the Dealer Number. Suggested formats for OEMs or other large institutions include: DUNs Number, ShortMfgCode + DUNs, or ShortMfgCode. The suggested format for Dealers is: ShortMfgCode+Dealer Number.	O	
LocationId	The Location Id field uniquely identifies the location of the Sender of a message. This Id may be aligned with a physical address or data centers. This field provides an additional level of granularity beyond the usage of the Party Id for additional routing and deliver of data.	O	
ServiceId	The Service Id field identifies the particular service from which a message is being sent, e.g., an inventory service.	O	

XML Instance Representation

```

<...>
  <LogicalId> Text </LogicalId> [0..1]
  <Component> Text </Component> [1]
  <Task> Text </Task> [1]
  <ReferenceId> Reference </ReferenceId> [0..1]
  <AuthorizationId> Id </AuthorizationId> [0..1]
  <CreatorNameCode> Text </CreatorNameCode> [1]
  <SenderNameCode> ShortMfg </SenderNameCode> [1]
  <SenderURI> URI </SenderURI> [0..1]
  <DealerNumber> PartyId </DealerNumber> [0..1]
  <StoreNumber> Text </StoreNumber> [0..1]
  <AreaNumber> Text </AreaNumber> [0..1]
  <DealerCountry> Country </DealerCountry> [0..1]
  <Language> Language </Language> [0..1]
  <DeliverPendingMailInd> Indicator </DeliverPendingMailInd> [0..1]
  <Password> Text </Password> [0..1]

```

Show Parts Locator

```
<SystemVersion> SystemVersion </SystemVersion> [0..1]
<PartyId> PartyId </PartyId> [0..1]
<LocationId> LocationId </LocationId> [0..1]
<ServiceId> ServiceId </ServiceId> [0..1]
</...>
```

SenderBase

Name	SenderBase
Abstract	no

Data Elements and Components

Field / Component	Description	R/O	Business Rule
LogicalId	Provides the logical location of the server and applications from which the Business Object Document originated. It can be used to establish a logical to physical mapping, however its use is optional. Each system or combination of systems should maintain an external central reference table containing the logical names or logical addresses of the application systems in the integration configuration. This enables the logical names to be mapped to the physical network addresses of the resources needed on the network. Note: The technical implementation of this Domain Naming Service is not dictated by this specification. This logical to physical mapping may be done at execution time by the application itself or by a middleware transport mechanism, depending on the integration architecture used. This provides for a simple but effective directory access capability while maintaining application independence from the physical location of those resources on the network	O	
Component	Provides a finer level of control than Logical Identifier and represents the business application that issued the Business Object Document. Its use is optional. For STAR's use this is the DCS Software code name		
Task	Describes the business event that initiated the need for the Business Object Document to be created. For STAR, the task is defined in the Implementation Guidelines for each BOD. It is usually a short description of the BOD. Ex: SalesLead, CreditDecision, etc.	R	

Show Parts Locator

Field / Component	Description	R/O	Business Rule
ReferenceId	Enables the sending application to indicate the instance identifier of the event or task that caused the BOD to be created. This is used to correlate a response BOD to an originating BOD	O	
AuthorizationId	Identifies the authorization level of the user or application that is sending the Business Object Document Message. This authorization level being recognized by the receiving system indicates what can be done on the receiving system. For STAR, this is the User ID.	O	

XML Instance Representation

```
<...>
  <LogicalId> Text </LogicalId> [0..1]
  <Component> Text </Component> [1]
  <Task> Text </Task> [1]
  <ReferenceId> Reference </ReferenceId> [0..1]
  <AuthorizationId> Id </AuthorizationId> [0..1]
</...>
```

ServiceId

These field(s) use this type: **ServiceId,ServiceId.**

The Service Id field identifies the particular service to or from which a message is being sent, e.g., an inventory service.

Name	ServiceId
Abstract	no

XML Instance Representation

```
<...>
  Id
</...>
```

ShipPart

These field(s) use this type: **Part,Part.**

Show Parts Locator

Name	ShipPart
Abstract	no

Data Elements and Components

Field / Component	Description	R/O	Business Rule
ItemId	Item part number identifier	O	
ItemIdDescription	Item part number detail description	O	
PartType	Specifies whether the parts are indicated by manufacturer part code or Part Number	O	
SupplierItemId	Supplier identification of part on order.	O	
PartClass	Gifts, literature, keys, regular parts ã#Â¢Â#Â# Inventory Class code (if any) used in DMS system.	O	
PartManufacturer	Identifes the part manufacturer	O	
ClassCode	Identifies class of part (i.e., accessories, replacement, etc.)	O	
HazmatInd	Indicates whether this part is considered a hazardous material (e.g., air bag).	O	

XML Instance Representation

```
<...>
  <ItemId> ItemId </ItemId> [0..1]
  <ItemIdDescription> ItemIdDescription </ItemIdDescription> [0..1]
  <PartType> PartType </PartType> [0..1]
  <SupplierItemId> SupplierItemId </SupplierItemId> [0..1]
  <PartClass> PartClass </PartClass> [0..1]
  <PartManufacturer> PartManufacturer </PartManufacturer> [0..1]
  <ClassCode> ClassCode </ClassCode> [0..1]
  <HazmatInd> HazmatInd </HazmatInd> [0..1]
</...>
```

Show

Show Parts Locator

These field(s) use this type: **Show.**

Name	Show
Abstract	no

Data Elements and Components

Field / Component	Description	R/O	Business Rule
Verb		R	
OriginalBODId		O	

XML Instance Representation

```
<...  
confirm="ConfirmType [0..1]">  
  <OriginalBODId> xsd:NMTOKEN </OriginalBODId> [0..1]  
</...>
```

ShowPartsLocator

These field(s) use this type: **ShowPartsLocator.**

Name	ShowPartsLocator
Abstract	no

Data Elements and Components

Show Parts Locator

Field / Component	Description	R/O	Business Rule
ApplicationArea	Provides the information that an application may need to know in order to communicate in an integration of two or more business applications. The ApplicationArea is used at the applications layer of communication. While the integration frameworks web services and middleware provide the communication layer that OAGIS operates on top of. Provides the information that an application may need to know in order to communicate in an integration of two or more business applications. The ApplicationArea is used at the applications layer of communication. While the integration frameworks web services and middleware provide the communication layer that OAGIS operates on top of.	R	
DataArea		R	

XML Instance Representation

```
<...  
revision="Text [0..1]"  
release="8.1-Lite [0..1]"  
environment="Text [0..1]"  
lang="Language [0..1]"  
bodVersion="Text [0..1]">  
  <ApplicationArea> ... </ApplicationArea> [1]  
  <DataArea> ShowPartsLocatorDataArea </DataArea> [1]  
</...>
```

ShowPartsLocatorDataArea

These field(s) use this type: **DataArea**.

Name	ShowPartsLocatorDataArea
Abstract	no

Data Elements and Components

Show Parts Locator

Field / Component	Description	R/O	Business Rule
Show	The Show verb is used when sending the information about a specific instance of a business document or entity. The Show verb may be used to respond to a Get request or it can be used in a publish scenario, where it pushes information to other applications based on a business event. Although BODs based on this verb do not commonly cause updates to occur, there may be times when the component receiving the Show decides to use the information it receives to update. This is entirely the decision of the receiving software component and is not forbidden. The behavior of the Show verb is quite straight forward with one exception. The Show response to any Get request needs to read the request carefully to ensure the response is returning the requested Data Types.	R	
PartsLocator	The scope of this BOD is to define the Parts Locator process for individual dealers using either OEM or third party parts locator retrieval services to locate parts at either nearby dealership or parts distribution warehouse.	R	

XML Instance Representation

```
<...>
  <Show> ... </Show> [1]
  <PartsLocator> ... </PartsLocator> [1..*]
</...>
```

Signature

These field(s) use this type: **Signature**.

Name	Signature
Abstract	no

Attributes

Field / Component	Description	R/O	Business Rule
qualifyingAgency		O	

Show Parts Locator

Data Elements and Components

Field / Component	Description	R/O	Business Rule
-------------------	-------------	-----	---------------

XML Instance Representation

```
<...  
qualifyingAgency="Text [0..1]">  
Allow any elements from any namespace (strict validation). [0..1]  
</...>
```

SuggestedRetailPrice

These field(s) use this type: SuggestedRetailPrice,SuggestedRetailPrice.

Suggested retail price of the individual part for the quantity indicated.

Name	SuggestedRetailPrice
Abstract	no

XML Instance Representation

```
<...  
currency="Currency [1]">  
Amount  
</...>
```

SupplierItemId

These field(s) use this type: SupplierItemId,SupplierItemId.

Supplier identification of part on order.

Name	SupplierItemId
Abstract	no

XML Instance Representation

```
<...>
```

Show Parts Locator

```
ItemId
</...>
```

SupplyingParties

These field(s) use this type: **SupplyingParties**.

Represents the parts for which pricing and availability is being requested.

Name	SupplyingParties
Abstract	no

Data Elements and Components

Field / Component	Description	R/O	Business Rule
Party	Represents the parts for which pricing and availability was determined.	R	

XML Instance Representation

```
<...>
  <Party> PartsLocatorSupplyingParty </Party> [1..*]
</...>
```

SupplyingPartyLocation

These field(s) use this type: **SupplyingPartyLocation**.

The Supplying Locations Component represents the locations of the available part(s). This could be a Parts Distribution Center (PDC) or a dealership location.

Name	SupplyingPartyLocation
Abstract	no

Data Elements and Components

Show Parts Locator

Field / Component	Description	R/O	Business Rule
SupplyingPartyLocationUID	The SupplyingPartyLocation.SupplyingPartyLocationUID of the supplying party's location. The combination of SupplyingPartyUID and SupplyingPartyLocationUID must equal one of the records in SupplyingPartyLocations. This field is only populated when the LocatedLine has no child lines.	R	
SupplyingPartyUID	This field identifies the supplying party for the located line and must be equal to one of the SupplyingParties.Party.SupplyingPartyUID values.	R	
LocationName	A name to identify the location.	R	
Address	Address of the SupplyingLocation.	O	
Contact	Contact information for the SupplyingLocation	O	
ZoneCode	For dealers only, identifies the dealer's supplier defined zone code.	O	
DistrictCode	For dealers only, identifies the dealer's supplier defined district code.	O	

XML Instance Representation

```
<...>
  <SupplyingPartyLocationUID> SupplyingPartyLocationUID </SupplyingPartyLocationUID> [1]
  <SupplyingPartyUID> SupplyingPartyUID </SupplyingPartyUID> [1]
  <LocationName> LocationName </LocationName> [1]
  <Address> OrganizationAddress </Address> [0..1]
  <Contact> OrganizationContact </Contact> [0..1]
  <ZoneCode> ZoneCode </ZoneCode> [0..1]
  <DistrictCode> DistrictCode </DistrictCode> [0..1]
</...>
```

SupplyingPartyLocations

These field(s) use this type: **SupplyingPartyLocations**.

Represents the parts for which pricing and availability is being requested.

Name	SupplyingPartyLocations
Abstract	no

Show Parts Locator

Data Elements and Components

Field / Component	Description	R/O	Business Rule
SupplyingPartyLocation	Represents the parts for which pricing and availability was determined.	R	

XML Instance Representation

```
<...>  
  <SupplyingPartyLocation> SupplyingPartyLocation </SupplyingPartyLocation> [1..*]  
</...>
```

SupplyingPartyLocationUID

These field(s) use this type: **SupplyingPartyLocationUID,SupplyingPartyLocationUID.**

The SupplyingPartyLocation.SupplyingPartyLocationUID of the supplying party's location. The combination of SupplyingPartyUID and SupplyingPartyLocationUID must equal one of the records in SupplyingPartyLocations. This field is only populated when the LocatedLine has no child lines.

Name	SupplyingPartyLocationUID
Abstract	no

XML Instance Representation

```
<...>  
  UID  
</...>
```

SupplyingPartyUID

These field(s) use this type: **SupplyingPartyUID,SupplyingPartyUID,SupplyingPartyUID.**

This field identifies the supplying party for the located line and must be equal to one of the SupplyingParties.Party.SupplyingPartyUID values.

Name	SupplyingPartyUID
Abstract	no

Show Parts Locator

XML Instance Representation

```
<...>
  UID
</...>
```

UID

Unique identification used to defined primary and foreign key fields.

Name	UID
Abstract	no

XML Instance Representation

```
<...>
  xsd:string
</...>
```

Verb

These field(s) use this type: Verb.

Name	Verb
Abstract	no

Data Elements and Components

Field / Component	Description	R/O	Business Rule
-------------------	-------------	-----	---------------

XML Instance Representation

```
<.../>
```

AddressLine

These field(s) use this type: AddressLine.

Show Parts Locator

Indicates the multiple lines of an address. The first line is typically the street name and number.

Name	AddressLine
------	-------------

*Base XSD Type: string

AvailabilityStatus

These field(s) use this type: AvailabilityStatus.

Indicates the status of the part at the supplying location.

Name	AvailabilityStatus
------	--------------------

*Base XSD Type: string

Code Value	Description
In Stock	Part is in stock.
Out Of Stock	Part is in stock.
Other	Other
N/A	Not Applicable

ChildLinePricingAppliesInd

These field(s) use this type: ChildLinePricingAppliesInd.

Identifies if the pricing of the child line(s) applies.

Name	ChildLinePricingAppliesInd
------	----------------------------

*Base XSD Type: string

Code Value	Description
0	
1	

Show Parts Locator

ChildLineReasonCode

These field(s) use this type: **ChildLineReasonCode**.

The reason this line has child lines.

Name	ChildLineReasonCode
*Base XSD Type: string	
Code Value	Description
Multi-Condition	One or more child lines exist due to differences in allocation such as back orders and warehouse supply.
Kit Exploded	One or more child lines exists to express the availability of parts within the kit.
Superseded	One or more child lines exist to express the ordered part was superseded by the listed parts.
Substituted	One or more child lines exist to express the ordered part was substituted by the listed parts.

City

These field(s) use this type: **City**.

City of the Address.

Name	City
*Base XSD Type: string	

ClassCode

These field(s) use this type: **ClassCode**.

Identifies class of part (i.e., accessories, replacement, etc.).

Name	ClassCode
------	-----------

Show Parts Locator

*Base XSD Type: string

Code

These field(s) use this type: **BODId**.

Unique code name

Name	Code
------	------

*Base XSD Type: string

ConfirmType

Name	ConfirmType
------	-------------

*Base XSD Type: NMTOKEN

Code Value	Description
Always	
OnChange	
Never	

ContactTelephoneNumberOrganizationDescription

Contact Telephone Number Organization Description

Name	ContactTelephoneNumberOrganizationDescription
------	---

*Base XSD Type: string

Code Value	Description
Day Phone	Day Phone

Show Parts Locator

Code Value	Description
Cell Phone	Cell Phone
Pager	Pager
Other	Other

ContactTime

These field(s) use this type: **ContactTime**.

Preferred contact time (i.e. Best day/time to reach the contact).

Name	ContactTime
------	-------------

*Base XSD Type: string

Country

These field(s) use this type: **DealerCountry,DealerCountry,Country**.

Country in which the Address is in. Conforms to ISO 3166-2. AF -AFGHANISTAN AL -ALBANIA DZ -ALGERIA AS -AMERICAN SAMOA AD -ANDORRA AO -ANGOLA AI -ANGUILLA AQ -ANTARCTICA AG -ANTIGUA AND BARBUDA AR -ARGENTINA AM -ARMENIA AW -ARUBA AU -AUSTRALIA AT -AUSTRIA AZ -AZERBAIJAN BS -BAHAMAS BH -BAHRAIN BD -BANGLADESH BB -BARBADOS BY -BELARUS BE -BELGIUM BZ -BELIZE BJ -BENIN BM -BERMUDA BT -BHUTAN BO -BOLIVIA BA -BOSNIA AND HERZEGOVINA BW -BOTSWANA BV -BOUVET ISLAND BR -BRAZIL IO-BRITISH INDIAN OCEAN TERRITORY BN -BRUNEI DARUSSALAM BG -BULGARIA BF -BURKINA FASO BI -BURUNDI KH -CAMBODIA CM -CAMEROON CA -CANADA CV -CAPE VERDE KY -CAYMAN ISLANDS CF -CENTRAL AFRICAN REPUBLIC TD -CHAD CL -CHILE CN -CHINA CX -CHRISTMAS ISLAND CC -COCOS (KEELING) ISLANDS CO -COLOMBIA KM -COMOROS CG -CONGO CD -CONGO, THE DEMOCRATIC REPUBLIC OF THE CK -COOK ISLANDS CR -COSTA RICA CI -CÔTE D'IVOIRE HR -CROATIA CU -CUBA CY -CYPRUS CZ -CZECH REPUBLIC DK -DENMARK DJ -DJIBOUTI DM -DOMINICA DO -DOMINICAN REPUBLIC EC -ECUADOR EG -EGYPT SV -EL SALVADOR GQ -EQUATORIAL GUINEA ER -ERITREA EE -ESTONIA ET -ETHIOPIA FK -FALKLAND ISLANDS (MALVINAS) FO -FAROE ISLANDS FJ -FIJI FI -FINLAND FR -FRANCE GF -FRENCH GUIANA PF -FRENCH POLYNESIA TF -FRENCH SOUTHERN TERRITORIES GA -GABON GM -GAMBIA GE -GEORGIA DE -GERMANY GH -GHANA GI -GIBRALTAR GR -GREECE GL -GREENLAND GD -GRENADA GP -GUADELOUPE GU -GUAM GT -GUATEMALA GN -GUINEA GW -GUINEA-BISSAU GY -GUYANA HT -HAITI HM -HEARD ISLAND AND MCDONALD ISLANDS VA -HOLY SEE (VATICAN CITY STATE) HN -HONDURAS HK -HONG KONG HU -HUNGARY IS -ICELAND IN -INDIA ID -INDONESIA IR -IRAN, ISLAMIC REPUBLIC OF IQ -IRAQ

Show Parts Locator

IE -IRELAND IL -ISRAEL IT -ITALY JM -JAMAICA JP -JAPAN JO -JORDAN KZ -KAZAKHSTAN KE -KENYA KI -KIRIBATI KP -KOREA, DEMOCRATIC PEOPLE'S REPUBLIC OF KR -KOREA, REPUBLIC OF KW -KUWAIT KG -KYRGYZSTAN LA -LAO PEOPLE'S DEMOCRATIC REPUBLIC LV -LATVIA LB -LEBANON LS -LESOTHO LR -LIBERIA LY -LIBYAN ARAB JAMAHIRIYA LI -LIECHTENSTEIN LT -LITHUANIA LU -LUXEMBOURG MO -MACAO MK -MACEDONIA, THE FORMER YUGOSLAV REPUBLIC OF MG -MADAGASCAR MW -MALAWI MY -MALAYSIA MV -MALDIVES ML -MALI MT -MALTA MH -MARSHALL ISLANDS MQ -MARTINIQUE MR -MAURITANIA MU -MAURITIUS YT -MAYOTTE MX -MEXICO FM -MICRONESIA, FEDERATED STATES OF MD -MOLDOVA, REPUBLIC OF MC -MONACO MN -MONGOLIA MS -MONTSERRAT MA -MOROCCO MZ -MOZAMBIQUE MM -MYANMAR NA -NAMIBIA NR -NAURU NP -NEPAL NL -NETHERLANDS AN -NETHERLANDS ANTILLES NC -NEW CALEDONIA NZ -NEW ZEALAND NI -NICARAGUA NE -NIGER NG -NIGERIA NU -NIUE NF -NORFOLK ISLAND MP -NORTHERN MARIANA ISLANDS NO -NORWAY OM -OMAN PK -PAKISTAN PW -PALAU PS -PALESTINIAN TERRITORY, OCCUPIED PA -PANAMA PG -PAPUA NEW GUINEA PY -PARAGUAY PE -PERU PH -PHILIPPINES PN -PITCAIRN PL -POLAND PT -PORTUGAL PR -PUERTO RICO QA -QATAR RE -RÅ#Å#UNION RO -ROMANIA RU -RUSSIAN FEDERATION RW -RWANDA SH -SAINT HELENA KN -SAINT KITTS AND NEVIS LC -SAINT LUCIA PM -SAINT PIERRE AND MIQUELON VC -SAINT VINCENT AND THE GRENADINES WS -SAMOA SM -SAN MARINO ST -SAO TOME AND PRINCIPE SA -SAUDI ARABIA SN -SENEGAL CS -SERBIA AND MONTENEGRO SC -SEYCHELLES SL -SIERRA LEONE SG -SINGAPORE SK -SLOVAKIA SI -SLOVENIA SB -SOLOMON ISLANDS SO -SOMALIA ZA -SOUTH AFRICA GS -SOUTH GEORGIA AND THE SOUTH SANDWICH ISLANDS ES -SPAIN LK -SRI LANKA SD -SUDAN SR -SURINAME SJ -SVALBARD AND JAN MAYEN SZ -SWAZILAND SE -SWEDEN CH -SWITZERLAND SY -SYRIAN ARAB REPUBLIC TW -TAIWAN, PROVINCE OF CHINA TJ -TAJIKISTAN TZ -TANZANIA, UNITED REPUBLIC OF TH -THAILAND TL -TIMOR-LESTE TG - TOGO TK -TOKELAU TO -TONGA TT -TRINIDAD AND TOBAGO TN -TUNISIA TR -TURKEY TM -TURKMENISTAN TC -TURKS AND CAICOS ISLANDS TV -TUVALU UG -UGANDA UA -UKRAINE AE -UNITED ARAB EMIRATES GB -UNITED KINGDOM US -UNITED STATES UM -UNITED STATES MINOR OUTLYING ISLANDS UY -URUGUAY UZ -UZBEKISTAN VU -VANUATU VE -VENEZUELA VN -VIET NAM VG -VIRGIN ISLANDS, BRITISH VI -VIRGIN ISLANDS, U.S. WF -WALLIS AND FUTUNA EH -WESTERN SAHARA YE -YEMEN ZM -ZAMBIA ZW -ZIMBABWE

Name	Country
*Base XSD Type: string	
Code Value	Description
US	
AF	
AL	
DZ	
AS	
AD	

Show Parts Locator

Code Value	Description
AO	
AI	
AQ	
AG	
AR	
AM	
AW	
AU	
AT	
AZ	
BS	
BH	
BD	
BB	
BY	
BE	
BZ	
BJ	
BM	
BT	
BO	
BA	

Show Parts Locator

Code Value	Description
BW	
BV	
BR	
IO	
BN	
BG	
BF	
BI	
KH	
CM	
CA	
CV	
KY	
CF	
TD	
CL	
CN	
CX	
CC	
CO	
KM	
CG	

Show Parts Locator

Code Value	Description
CD	
CK	
CR	
CI	
HR	
CU	
CY	
CZ	
DK	
DJ	
DM	
DO	
EC	
EG	
SV	
GQ	
ER	
EE	
ET	
FK	
FO	
FJ	

Show Parts Locator

Code Value	Description
FI	
FR	
GF	
PF	
TF	
GA	
GM	
GE	
DE	
GH	
GI	
GR	
GL	
GD	
GP	
GU	
GT	
GN	
GW	
GY	
HT	
HM	

Show Parts Locator

Code Value	Description
VA	
HN	
HK	
HU	
IS	
IN	
ID	
IR	
IQ	
IE	
IL	
IT	
JM	
JP	
JO	
KZ	
KE	
KI	
KP	
KR	
KW	
KG	

Show Parts Locator

Code Value	Description
LA	
LV	
LB	
LS	
LR	
LY	
LI	
LT	
LU	
MO	
MK	
MG	
MW	
MY	
MV	
ML	
MT	
MH	
MQ	
MR	
MU	
YT	

Show Parts Locator

Code Value	Description
MX	
FM	
MD	
MC	
MN	
MS	
MA	
MZ	
MM	
NA	
NR	
NP	
NL	
AN	
NC	
NZ	
NI	
NE	
NG	
NU	
NF	
MP	

Show Parts Locator

Code Value	Description
NO	
OM	
PK	
PW	
PS	
PA	
PG	
PY	
PE	
PH	
PN	
PL	
PT	
PR	
QA	
RE	
RO	
RU	
RW	
SH	
KN	
LC	

Show Parts Locator

Code Value	Description
PM	
VC	
WS	
SM	
ST	
SA	
SN	
CS	
SC	
SL	
SG	
SK	
SI	
SB	
SO	
ZA	
GS	
ES	
LK	
SD	
SR	
SJ	

Show Parts Locator

Code Value	Description
SZ	
SE	
CH	
SY	
TW	
TJ	
TZ	
TH	
TL	
TG	
TK	
TO	
TT	
TN	
TR	
TM	
TC	
TV	
UG	
UA	
AE	
GB	

Show Parts Locator

Code Value	Description
UM	
UY	
UZ	
VU	
VE	
VN	
VG	
VI	
WF	
EH	
YE	
ZM	
ZW	

County

These field(s) use this type: **County**.

Business party county location

Name	County
------	--------

*Base XSD Type: string

Currency

The ISO code identifying the type of currency in use.

Show Parts Locator

Name	Currency
*Base XSD Type: string	
Code Value	Description
USD	
ADP	
AED	
AFA	
ALL	
ANG	
AOK	
ARA	
ATS	
AUD	
AWG	
BBD	
BDT	
BEF	
BGL	
BHD	
BIF	
BMD	
BND	
BOB	

Show Parts Locator

Code Value	Description
BRC	
BSD	
BTN	
BUK	
BWP	
BZD	
CAD	
CHF	
CLF	
CLP	
CNY	
COP	
CRC	
CSK	
CUP	
CVE	
CYP	
DDM	
DEM	
DJF	
DKK	
DOP	

Show Parts Locator

Code Value	Description
DZD	
ECS	
EGP	
ESP	
ETB	
EUR	
FIM	
FKP	
FRF	
GBP	
GHC	
GIP	
GMD	
GNF	
GRD	
GTQ	
GWP	
GYD	
HKD	
HNL	
HTG	
HUF	

Show Parts Locator

Code Value	Description
IDR	
IEP	
ILS	
INR	
IQD	
IRR	
ISK	
ITL	
JMD	
JOD	
JPY	
KES	
KHR	
KMF	
KPW	
KRW	
KWD	
KYD	
LAK	
LBP	
LKR	
LRD	

Show Parts Locator

Code Value	Description
LSL	
LUF	
LYD	
MAD	
MGF	
MNT	
MOP	
MRO	
MTL	
MUR	
MVR	
MWK	
MXN	
MYR	
MZM	
NGN	
NIC	
NLG	
NOK	
NPR	
NZD	
OMR	

Show Parts Locator

Code Value	Description
PAB	
PEI	
PGK	
PHP	
PKR	
PLZ	
PTE	
PYG	
QAR	
ROL	
RWF	
SAR	
SBD	
SCR	
SDP	
SEK	
SGD	
SHP	
SLL	
SKK	
SOS	
SRG	

Show Parts Locator

Code Value	Description
STD	
SUR	
SVC	
SYP	
SZL	
THB	
TND	
TOP	
TPE	
TRL	
TTD	
TWD	
TZS	
UGS	
UYP	
VEB	
VND	
VUV	
WST	
YDD	
YER	
YUD	

Show Parts Locator

Code Value	Description
ZAR	
ZRZ	
ZWD	
Other	

Date

Date conforms to ISO 8601 format rules EX: \d\d\d\d-\d\d-\d\d

Name	Date
------	------

*Base XSD Type: date

DateTime

These field(s) use this type: CreationDateTime.

Date and time conforms to ISO 8601format rules without offset EX:2003-11-05T13:15:30Z

Name	DateTime
------	----------

*Base XSD Type: dateTime

DealerName

These field(s) use this type: DealerName.

Dealer name

Name	DealerName
------	------------

*Base XSD Type: string

Show Parts Locator

Department

Department

Name	Department
------	------------

*Base XSD Type: string

DepartmentType

These field(s) use this type: DepartmentType.

Identifies the type of department

Name	DepartmentType
------	----------------

*Base XSD Type: string

DistrictCode

These field(s) use this type: DistrictCode,DistrictCode,DistrictCode,DistrictCode.

Manufacturer Assigned District Code

Name	DistrictCode
------	--------------

*Base XSD Type: string

DocumentDateTime

These field(s) use this type: DocumentDateTime.

Is the date and time the document was last created. This is not the date and time that the BOD message instance was created.

Name	DocumentDateTime
------	------------------

*Base XSD Type: dateTime

Show Parts Locator

HazmatInd

These field(s) use this type: **HazmatInd.**

Indicator that Hazmat Was Used

Name	HazmatInd
------	-----------

*Base XSD Type: string

Code Value	Description
------------	-------------

0

1

Indicator

These field(s) use this type: **DeliverPendingMailInd.**

0 = No, 1 = Yes

Name	Indicator
------	-----------

*Base XSD Type: string

Code Value	Description
------------	-------------

0

1

Language

These field(s) use this type: **Language.**

Language conforms to ISO 639-2 rules. Note the format for this field is language-Country (see Country data type for the list of countries with definitions).
AA "Afar", AB "Abkhazian", AF "Afrikaans", AM "Amharic", AR "Arabic", AS "Assamese", AY "Aymara", AZ "Azerbaijani", BA "Bashkir", BE "Byelorussian", BG "Bulgarian", BH "Bihari", BI "Bislama", BN "Bengali" "Bangla", BO "Tibetan", BR "Breton", CA "Catalan", CO "Corsican", CS

Show Parts Locator

"Czech", CY "Welsh", DA "Danish", DE "German", DZ "Bhutani", EL "Greek", EN "English" "American", ES "Spanish", ET "Estonian", EU "Basque", FA "Persian", FI "Finnish", FJ "Fiji", FO "Faeroese", FR "French", FY "Frisian", GA "Irish", GD "Gaelic" "Scots Gaelic", GL "Galician", GN "Guarani", GU "Gujarati", HA "Hausa", HI "Hindi", HR "Croatian", HU "Hungarian", HY "Armenian", IK "Inupiak", IN "Indonesian", IS "Icelandic", IT "Italian", IW "Hebrew", JA "Japanese", JI "Yiddish", JW "Javanese", KA "Georgian", KK "Kazakh", KL "Greenlandic", KM "Cambodian", KN "Kannada", KO "Korean", KS "Kashmiri", KU "Kurdish", KY "Kirghiz", LA "Latin", LN "Lingala", LO "Laothian", LT "Lithuanian", LV "Latvian" "Lettish", MG "Malagasy", MI "Maori", MK "Macedonian", ML "Malayalam", MN "Mongolian", MO "Moldavian", MR "Marathi", MS "Malay", MT "Maltese", MY "Burmese", NA "Nauru", NE "Nepali", NL "Dutch", NO "Norwegian", OC "Occitan", OM "Oromo" "Afan", OR "Oriya", PA "Punjabi", PL "Polish", PS "Pashto" "Pushto", PT "Portuguese", QU "Quechua", RM "Rhaeto-Romance", RN "Kirundi", RO "Romanian", RU "Russian", RW "Kinyarwanda", SA "Sanskrit", SD "Sindhi", SG "Sangro", SH "Serbo-Croatian", SI "Singhalese", SK "Slovak", SL "Slovenian", SM "Samoan", SN "Shona", SO "Somali", SQ "Albanian", SR "Serbian", SS "Siswati", ST "Sesotho", SU "Sudanese", SV "Swedish", SW "Swahili", TA "Tamil", TE "Tegulu", TG "Tajik", TH "Thai", TI "Tigrinya", TK "Turkmen", TL "Tagalog", TN "Setswana", TO "Tonga", TR "Turkish", TS "Tsonga", TT "Tatar", TW "Twi", UK "Ukrainian", UR "Urdu", UZ "Uzbek", VI "Vietnamese", WO "Wolof", XH "Xhosa", YO "Yoruba", ZH "Chinese", ZU "Zulu"

Name	Language
*Base XSD Type: string	
Code Value	Description
en-US	
en-CA	
aa-ET	
ab-GE	
af-ZA	
am-ET	
ar-SA	
as-IN	
ay-BO	
az-AZ	
ba-RU	
be-BY	

Show Parts Locator

Code Value	Description
bg-BG	
bh-IN	
bi-VU	
bn-BD	
bo-BT	
br-FR	
ca-ES	
co-FR	
cs-CZ	
cy-GB	
da-DE	
de-DE	
dz-BT	
el-GR	
es-ES	
et-EE	
eu-ES	
fa-AF	
fi-FI	
fj-FJ	
fo-FO	
fr-CA	

Show Parts Locator

Code Value	Description
fr-FR	
fy-NL	
ga-IE	
gd-GB	
gl-ES	
gn-PY	
gu-IN	
ha-NG	
hi-IN	
hr-HR	
hu-HU	
hy-AM	
ik-GL	
in-ID	
is-IS	
it-IT	
iw-IL	
ja-JP	
ji-IL	
jw-ID	
ka-GE	
kk-KZ	

Show Parts Locator

Code Value	Description
kl-GL	
km-KH	
kn-IN	
ko-KP	
ko-KR	
ks-IN	
ku-IQ	
ky-CN	
la-VA	
ln-CD	
lo-LA	
lt-LT	
lv-LV	
mg-MG	
mi-NZ	
mk-MK	
ml-IN	
mn-MN	
mo-MO	
mr-IN	
ms-MY	
mt-MH	

Show Parts Locator

Code Value	Description
my-MM	
na-NR	
ne-NP	
nl-NL	
no-NO	
oc-FR	
om- ET	
or-IN	
pa-IN	
pl-PL	
ps-PK	
pt-PT	
qu-PE	
rm-CH	
rn-BI	
ro-RO	
ru-RU	
rw-RW	
sa-IN	
sd-PK	
sg-CF	
sh-HR	

Show Parts Locator

Code Value	Description
si-LK	
sk-SK	
sl-SI	
sm-WS	
sn-ZW	
so-SO	
sq-AL	
sr-CS	
ss-ZA	
st-ZA	
su-SD	
sv-SE	
sw-TL	
ta-IN	
te-IN	
tg-TJ	
th-TH	
ti-ET	
tk-TM	
tl-PH	
tn-ZA	
to-TO	

Show Parts Locator

Code Value	Description
tr-TR	
ts-ZA	
tt-RU	
tw-GH	
uk-UA	
ur-PK	
uz-UZ	
vi-VN	
wo-SN	
xh-ZA	
yo-NG	
zh-CN	
zu-ZA	

LastInventoryDate

These field(s) use this type: **LastInventoryDate.**

The last date inventory was updated for this part.

Name	LastInventoryDate
*Base XSD Type: date	

LastSoldDate

These field(s) use this type: **LastSoldDate.**

Show Parts Locator

Last date this item was sold.

Name	LastSoldDate
------	--------------

*Base XSD Type: date

LineNumber

These field(s) use this type: LineNumber,LineNumber.

The number of the given Line Component within the document. LineNumbers are assigned by the sending system.

Name	LineNumber
------	------------

*Base XSD Type: string

LocatorCode

These field(s) use this type: LocatorCode.

Identifies the type of locator transaction being performed.

Name	LocatorCode
------	-------------

*Base XSD Type: string

Name

These field(s) use this type: GivenName,FamilyName,FormattedName.

Name of the Party.

Name	Name
------	------

*Base XSD Type: string

Note

Show Parts Locator

A free form note.

Name	Note
------	------

*Base XSD Type: string

OrganizationName

These field(s) use this type: **OrganizationName**.

OrganizationName

Name	OrganizationName
------	------------------

*Base XSD Type: string

PartClass

These field(s) use this type: **PartClass**.

Gifts, literature, keys, regular parts Inventory Class code (if any) used in DMS system.

Name	PartClass
------	-----------

*Base XSD Type: string

PartType

These field(s) use this type: **PartType**.

Specifies whether the parts are indicated by manufacturer part code or Part Number - H = Manufacturer Part Code, P = Part Number

Name	PartType
------	----------

*Base XSD Type: string

Code Value	Description
H	Manufacturer Part Code

Show Parts Locator

Code Value	Description
P	"P" = Pending

PartyName

These field(s) use this type: **PartyName**.

The name of the Party. The Party in the context of a Parts Locator is either a dealer, OEM supplier, or aftermarket distributor.

Name	PartyName
------	-----------

*Base XSD Type: string

PartyType

These field(s) use this type: **PartyType**.

Identifies if the supplier is a dealer or a supplier (OEM or aftermarket distributor).

Name	PartyType
------	-----------

*Base XSD Type: string

Code Value	Description
Supplier	OEM or aftermarket distributor
Dealer	Dealer
Other	Other
N/A	Not Applicable

PostalCode

These field(s) use this type: **PostalCode**.

Show Parts Locator

Postal Code of the Address.

Name	PostalCode
------	------------

*Base XSD Type: string

PreferredContactMethodOrganization

These field(s) use this type: PreferredContactMethod.

Preferred Contact Method Organization

Name	PreferredContactMethodOrganization
------	------------------------------------

*Base XSD Type: string

Code Value	Description
Day Phone	Day Phone
Cell Phone	Cell Phone
Work Fax	Work Fax
Pager	Pager
Work Email	Work Email
US Mail	US Mail
Other	Other

PriceExplanation

These field(s) use this type: PriceExplanation.

Explanatory Note for Pricing

Name	PriceExplanation
------	------------------

*Base XSD Type: string

Show Parts Locator

Reference

These field(s) use this type: **ReferenceId.**

Reference notation

Name	Reference
------	-----------

*Base XSD Type: string

ReferenceNumber

Reference number

Name	ReferenceNumber
------	-----------------

*Base XSD Type: string

RequestedSearchCriteriaType

These field(s) use this type: **RequestedSearchCriteriaType.**

Defines whether the search applies to Dealers, Suppliers or both Dealers and Suppliers.

Name	RequestedSearchCriteriaType
------	-----------------------------

*Base XSD Type: string

Code Value	Description
Dealer	Dealer
Supplier	OEM or aftermarket distributor
Dealer And Supplier	Searching dealers and suppliers
Other	Other
N/A	Not Applicable

Show Parts Locator

SalesPersonName

These field(s) use this type: SalesPersonName.

Name of Salesperson. Format for name should be "First Last" with no commas between first and last name

Name	SalesPersonName
-------------	------------------------

*Base XSD Type: string

SecondaryPassword

These field(s) use this type: SecondaryPassword.

Secondary password used to validate access to the dealer information

Name	SecondaryPassword
-------------	--------------------------

*Base XSD Type: string

SelectionMethod

These field(s) use this type: SelectionMethod.

Method used to select dealer Example: PF for preferred, PM for PMA, DI for distance, etc.

Name	SelectionMethod
-------------	------------------------

*Base XSD Type: string

ShortMfg

These field(s) use this type: SenderNameCode, DestinationNameCode.

Short Manufacturer or RSP Codes

Name	ShortMfg
-------------	-----------------

*Base XSD Type: string

Show Parts Locator

StateOrProvince

These field(s) use this type: **StateOrProvince**.

Is the State or Province of a given Address.

Name	StateOrProvince
------	-----------------

*Base XSD Type: string

StatusCode

These field(s) use this type: **StatusCode**.

A code identifying the reason for the status message.

Name	StatusCode
------	------------

*Base XSD Type: string

Code Value	Description
Success	The operation completed successfully. This does not necessarily mean that the BOD was processed. Instead it means that the client's role is done and that it won't receive any error messages later. Type of Response Code: Success.
Unspecified	An unspecified error occurred. The StatusText field contains the complete text.
Not In Inventory	Inventory is not currently available and back ordering was not requested.
Discontinued	The part has discontinued.
Invalid Part	Invalid part number.
Not Yet Available	The part is scheduled for a future release date and is not available at this time.
Not Authorized	The part is not authorized for your product line.
Under Development	The part is under development and not ready for sale.
Assembly Only	The part is a component part and is only available as an assembly.
Component Only	The part is an assembly part and is only available as a component.

Show Parts Locator

Code Value	Description
Internal Use Only	The part is reserved for manufacturing and supplier internal use; it is not a service replacement part.
Recalled	The part has been recalled.
Cannot Sell	The part is not available for sale for an unspecified reason.
Export Only	The part is not available for sale in the United States; it is for export vehicles only.
Credit Limit Exceeded	Credit limit exceeded.
Credit Card Denied	Credit card transaction denied by creditor.
Account On Hold	The dealer's account has been put on hold.
Invalid Unit Of Measure	The unit of measurement was invalid for this part number.
Invalid Promotion Code	The promotion code is invalid.
Invalid Shipping Method	The shipping method is invalid, for example, shipping by ground to Puerto Rico.
Duplicate Line Number	The line number is the same as another line within this transaction.
No Drop Shipment	Drop shipments are not allowed.
No Will Call	Will-call pickups are not allowed.
Minimum Quantity Not Met	There is a minimum quantity purchase requirement for this part and the quantity has not been met. The minimum quantity is: NN
Other	Other
N/A	Not Applicable

StatusText

These field(s) use this type: **StatusText**.

Descriptive status text.

Name	StatusText
------	------------

Show Parts Locator

*Base XSD Type: string

StatusType

These field(s) use this type: **StatusType**.

Defines the type of status that occurred. EX: S-Success, E-Error, I-Info, A-Abort

Name	StatusType
*Base XSD Type: string	
Code Value	Description
Success	The operation completed successfully. This does not necessarily mean that the BOD was processed. Instead it means that the client's role is done and that it won't receive any error messages later. Type of Response Code: Success.
Error	The operation resulted in error and did not succeed.
Warning	The operation completed a warning.
Informational	The provided StatusText is informational.
Other	Other
N/A	Not Applicable

SystemVersion

These field(s) use this type: **SystemVersion**.

The sender's software version number .

Name	SystemVersion
*Base XSD Type: string	

Text

Show Parts Locator

These field(s) use this type:

CreatorNameCode,StoreNumber,AreaNumber>Password,DestinationSoftwareCode,DestinationSoftware,StoreNumber,AreaNumber,LogicalId,Component,T

Indicates generic text type

Name	Text
------	------

*Base XSD Type: string

UOM

Units of Measure - ea=Each; bx=Box; case=Case; ctn=Carton; gal=Gallon; qt=Quart; pt=Pint; ft=Feet; yd=Yard; in=Inch; L=Liter; m=Meter; cm=Centimeter; kg=Kilograms; g=grams; other=Other

Name	UOM
------	-----

*Base XSD Type: string

Code Value	Description
ea	Each
bx	Box
case	Case
ctn	Carton
gal	Gallon
qt	Quart
pt	Pint
ft	ft = feet
yd	yd = yard
in	in = inch
L	"L" = Canceled
m	m = meter

Show Parts Locator

Code Value	Description
cm	cm = centimeter
kg	Kilogram
g	Gram
other	
tn	Ton
km	kilometers
mi	miles
hp	horsepower
kw	kilowatt

UrbanizationCode

These field(s) use this type: **UrbanizationCode.**

Geographic definition of a metropolitan or suburban area

Name	UrbanizationCode
------	------------------

*Base XSD Type: string

URI

These field(s) use this type: **SenderURI, DestinationURI, URI.**

URI

Name	URI
------	-----

*Base XSD Type: anyURI

ZoneCode

These field(s) use this type: ZoneCode,ZoneCode,ZoneCode,ZoneCode.

Manufacturer Assigned Zone Code

Name	ZoneCode
------	----------

*Base XSD Type: string

Fields and Global Attributes

Global declarations are items such as elements, attribute groups, and group definitions. These items are not defined within any particular component. A component may reference these definitions. Within a STAR XML Schemas these are typically known as global fields.

ApplicationArea

These field(s) use this type: ApplicationArea.

Provides the information that an application may need to know in order to communicate in an integration of two or more business applications. The ApplicationArea is used at the applications layer of communication. While the integration frameworks web services and middleware provide the communication layer that OAGIS operates on top of.

Provides the information that an application may need to know in order to communicate in an integration of two or more business applications. The ApplicationArea is used at the applications layer of communication. While the integration frameworks web services and middleware provide the communication layer that OAGIS operates on top of.

Name	ApplicationArea
Type	ApplicationArea
Nillable	no
Abstract	no

XML Instance Representation

```
<ApplicationArea>
  <Sender> Sender </Sender> [1]
  <CreationDateTime> DateTime </CreationDateTime> [1]
  <Signature> Signature </Signature> [0..1]
  <BODId> Code </BODId> [0..1]
  <Destination> Destination </Destination> [1]
</ApplicationArea>
```

Header

The Header component represents summary information for the entire Parts Locator.

Show Parts Locator

Name	Header
Type	PartsLocatorHeader
Nilable	no
Abstract	no

XML Instance Representation

```
<Header>
  <DocumentDateTime> DocumentDateTime </DocumentDateTime> [0..1]
  <SecondaryPassword> SecondaryPassword </SecondaryPassword> [0..1]
  <SecondaryDealerNumber> SecondaryDealerNumber </SecondaryDealerNumber> [0..1]
  <DocumentId> DocumentId </DocumentId> [1]
  <LocatorCode> LocatorCode </LocatorCode> [0..1]
  <RequestedSearchCriteriaType> RequestedSearchCriteriaType </RequestedSearchCriteriaType> [0..1]
  <RequestedSearchCriteria> RequestedSearchCriteria </RequestedSearchCriteria> [0..1]
  <Requestor> DealerParty </Requestor> [0..1]
</Header>
```

LocatedLines

These field(s) use this type: **LocatedLines**.

Represents the parts for which pricing and availability was determined.

Name	LocatedLines
Type	LocatedLines
Nilable	no
Abstract	no

XML Instance Representation

```
<LocatedLines>
  <LocatedLine> LocatedLine </LocatedLine> [1..*]
</LocatedLines>
```

Show Parts Locator

PartsLocator

These field(s) use this type: **PartsLocator**.

The scope of this BOD is to define the Parts Locator process for individual dealers using either OEM or third party parts locator retrieval services to locate parts at either nearby dealership or parts distribution warehouse.

Name	PartsLocator
Type	PartsLocator
Nullable	no
Abstract	no

XML Instance Representation

```
<PartsLocator>
<!--
Key Constraint - RequestedLinesKey
Selector - star:RequestedLines/star:RequestedLine
Field(s) - star:RequestedLineUID
-->
<!--
Key Constraint - SupplyingPartiesKey
Selector - star:SupplyingParties/star:Party
Field(s) - star:SupplyingPartyUID
-->
<!--
Key Constraint - SupplierPartyLocationsKey
Selector - star:SupplyingPartyLocations/star:SupplyingPartyLocation
Field(s) - star:SupplyingPartyLocationUID, star:SupplyingPartyUID
-->
<!--
Key Constraint - LocatedLinesKey
Selector - star:LocatedLines/star:LocatedLine
Field(s) - star:LocatedLineUID
-->
```

Show Parts Locator

```
<!--
Key Reference Constraint - SupplierLocationsRef
Selector - star:SupplyingLocations/star:Location
Field(s) - star:SupplyingPartyUID
Refers to - SupplyingPartiesKey
-->
<!--
Key Reference Constraint - LocatedLinesRef
Selector - star:LocatedLines/star:LocatedLine
Field(s) - star:RequestedLineUID
Refers to - RequestedLinesKey
-->
<!--
Key Reference Constraint - LocatedLinesSelfJoinRef
Selector - star:LocatedLines/star:LocatedLine
Field(s) - star:ParentLocatedLineUID
Refers to - LocatedLinesKey
-->
<!--
Key Reference Constraint - LocatedLinesSupplyingPartyRef
Selector - star:LocatedLines/star:LocatedLine
Field(s) - star:SupplyingPartyUID
Refers to - SupplyingPartiesKey
-->
<!--
Key Reference Constraint - LocatedLinesSupplierLocationsRef
Selector - star:LocatedLines/star:LocatedLine
Field(s) - star:SupplyingPartyLocationUID, star:SupplyingPartyUID
Refers to - SupplierPartyLocationsKey
-->
  <Header> ... </Header> [1]
  <RequestedLines> ... </RequestedLines> [0..1]
  <LocatedLines> ... </LocatedLines> [0..1]
  <SupplyingParties> ... </SupplyingParties> [0..1]
  <SupplyingPartyLocations> ... </SupplyingPartyLocations> [0..1]
</PartsLocator>
```

Show Parts Locator

RequestedLines

These field(s) use this type: **RequestedLines**.

Represents the parts for which pricing and availability is being requested.

Name	RequestedLines
Type	RequestedLines
Nilable	no
Abstract	no

XML Instance Representation

```
<RequestedLines>  
  <RequestedLine> RequestedLine </RequestedLine> [1..*]  
</RequestedLines>
```

Show

These field(s) use this type: **Show**.

The Show verb is used when sending the information about a specific instance of a business document or entity. The Show verb may be used to respond to a Get request or it can be used in a publish scenario, where it pushes information to other applications based on a business event. Although BODs based on this verb do not commonly cause updates to occur, there may be times when the component receiving the Show decides to use the information it receives to update. This is entirely the decision of the receiving software component and is not forbidden. The behavior of the Show verb is quite straight forward with one exception. The Show response to any Get request needs to read the request carefully to ensure the response is returning the requested Data Types.

Name	Show
Type	Show
Nilable	no
Abstract	no

XML Instance Representation

```
<Show
```

Show Parts Locator

```
confirm="ConfirmType [0..1]">
  <OriginalBODId> xsd:NMTOKEN </OriginalBODId> [0..1]
</Show>
```

ShowPartsLocator

These field(s) use this type: **ShowPartsLocator**.

Name	ShowPartsLocator
Type	ShowPartsLocator
Nilable	no
Abstract	no

XML Instance Representation

```
<ShowPartsLocator
revision="Text [0..1]"
release="8.1-Lite [0..1]"
environment="Text [0..1]"
lang="Language [0..1]"
bodVersion="Text [0..1]">
  <ApplicationArea> ... </ApplicationArea> [1]
  <DataArea> ShowPartsLocatorDataArea </DataArea> [1]
</ShowPartsLocator>
```

SupplyingParties

These field(s) use this type: **SupplyingParties**.

Represents the parties that have the requested part(s) available.

Name	SupplyingParties
Type	SupplyingParties
Nilable	no

Show Parts Locator

Abstract	no
-----------------	----

XML Instance Representation

```
<SupplyingParties>  
  <Party> PartsLocatorSupplyingParty </Party> [1..*]  
</SupplyingParties>
```

SupplyingPartyLocations

These field(s) use this type: **SupplyingPartyLocations**.

Represents the locations of the available part(s). This could be a Parts Distribution Center (PDC) or a dealership location.

Name	SupplyingPartyLocations
Type	SupplyingPartyLocations
Nilable	no
Abstract	no

XML Instance Representation

```
<SupplyingPartyLocations>  
  <SupplyingPartyLocation> SupplyingPartyLocation </SupplyingPartyLocation> [1..*]  
</SupplyingPartyLocations>
```

Verb

These field(s) use this type: **Verb**.

Name	Verb
Type	Verb
Nilable	no
Abstract	yes

Show Parts Locator

XML Instance Representation

```
<Verb/>
```

Show Parts Locator
