



***Standards for Technology in Automotive Retail***

**Implementation Guidelines  
Show Vehicle Inventory  
Repository Version Rev4.5.4**



## Table of Contents

<a href="#">Overview</a>	1
<a href="#">Schema Field Usage</a>	1
<a href="#">Business Scenario</a>	2
<a href="#">Relationship Diagram</a>	3
<a href="#">Schema Document Properties</a>	4
<a href="#">Components and Data Types</a>	5
<a href="#">Address</a>	5
<a href="#">AddressBase</a>	6
<a href="#">AlternatePartyId</a>	7
<a href="#">Amount</a>	7
<a href="#">ApplicationArea</a>	8
<a href="#">BrandedInfo</a>	9
<a href="#">BrandingStateCode</a>	10
<a href="#">BusinessObjectDocument</a>	10
<a href="#">CarrierId</a>	12
<a href="#">CheckCode</a>	12
<a href="#">CodeType</a>	13
<a href="#">ConfirmableVerb</a>	13
<a href="#">ContactBase</a>	14
<a href="#">Count</a>	15
<a href="#">DeliveryMileage</a>	15
<a href="#">Description</a>	16
<a href="#">Destination</a>	16
<a href="#">DocumentId</a>	18
<a href="#">DoorsQuantity</a>	18
<a href="#">ExpandedOption</a>	19
<a href="#">ExpandedVehicle</a>	21
<a href="#">FleetVehicleId</a>	24
<a href="#">HeaderBase</a>	24
<a href="#">Id</a>	25
<a href="#">IndividualOwnerParty</a>	25
<a href="#">IndividualOwnerPartyExtended</a>	26

<a href="#"><u>IndividualPartyAddress</u></a> .....	28
<a href="#"><u>IndividualPartyAlternatePartyId</u></a> .....	29
<a href="#"><u>IndividualPartyBase</u></a> .....	29
<a href="#"><u>IndividualPartyContact</u></a> .....	30
<a href="#"><u>IndividualPartyContactEMail</u></a> .....	31
<a href="#"><u>IndividualPartyContactFax</u></a> .....	32
<a href="#"><u>IndividualPartyContactTelephoneNumber</u></a> .....	32
<a href="#"><u>IndividualPartyPersonName</u></a> .....	33
<a href="#"><u>InventoryVehicle</u></a> .....	34
<a href="#"><u>InventoryVehicleExtended</u></a> .....	38
<a href="#"><u>Invoice</u></a> .....	43
<a href="#"><u>InvoiceTotal</u></a> .....	45
<a href="#"><u>ItemId</u></a> .....	45
<a href="#"><u>LocationId</u></a> .....	45
<a href="#"><u>ManufacturerParty</u></a> .....	46
<a href="#"><u>Measurement</u></a> .....	46
<a href="#"><u>Mileage</u></a> .....	47
<a href="#"><u>MinimalDemographics</u></a> .....	47
<a href="#"><u>ModelGroup</u></a> .....	48
<a href="#"><u>NonTaxableAmount</u></a> .....	48
<a href="#"><u>Option</u></a> .....	49
<a href="#"><u>OptionBase</u></a> .....	50
<a href="#"><u>OptionCost</u></a> .....	50
<a href="#"><u>OptionMSRP</u></a> .....	51
<a href="#"><u>OptionPackageId</u></a> .....	51
<a href="#"><u>OptionPrice</u></a> .....	51
<a href="#"><u>OptionRestrictionStatements</u></a> .....	52
<a href="#"><u>OptionType</u></a> .....	52
<a href="#"><u>OrganizationAddress</u></a> .....	53
<a href="#"><u>OrganizationalOwnerParty</u></a> .....	54
<a href="#"><u>OrganizationalOwnerPartyExtended</u></a> .....	55
<a href="#"><u>OrganizationalPartyAlternatePartyId</u></a> .....	56
<a href="#"><u>OrganizationContact</u></a> .....	57

<a href="#"><u>OrganizationContactExtended</u></a>	57
<a href="#"><u>OrganizationContactPersonName</u></a>	58
<a href="#"><u>OrganizationPartyBase</u></a>	59
<a href="#"><u>OrganizationPartyEmail</u></a>	60
<a href="#"><u>OrganizationPartyFax</u></a>	60
<a href="#"><u>OrganizationPartyTelephone</u></a>	61
<a href="#"><u>PartyBase</u></a>	61
<a href="#"><u>PartyId</u></a>	62
<a href="#"><u>Percent</u></a>	62
<a href="#"><u>RegulatoryId</u></a>	63
<a href="#"><u>RegulatoryRequirements</u></a>	63
<a href="#"><u>ResponseVerb</u></a>	64
<a href="#"><u>RestrictionDescription</u></a>	64
<a href="#"><u>SecondaryDealerNumber</u></a>	65
<a href="#"><u>Sender</u></a>	65
<a href="#"><u>SenderBase</u></a>	68
<a href="#"><u>ServiceId</u></a>	70
<a href="#"><u>ShipToParty</u></a>	70
<a href="#"><u>Show</u></a>	71
<a href="#"><u>ShowVehicleInventory</u></a>	71
<a href="#"><u>ShowVehicleInventoryDataArea</u></a>	72
<a href="#"><u>Signature</u></a>	73
<a href="#"><u>SoldToParty</u></a>	74
<a href="#"><u>Tax</u></a>	75
<a href="#"><u>TaxAmount</u></a>	76
<a href="#"><u>TaxDescription</u></a>	76
<a href="#"><u>TaxRate</u></a>	77
<a href="#"><u>TotalTaxableAmount</u></a>	77
<a href="#"><u>UnitSalesTaxAmount</u></a>	77
<a href="#"><u>Vehicle</u></a>	78
<a href="#"><u>VehicleBase</u></a>	79
<a href="#"><u>VehicleInventory</u></a>	81
<a href="#"><u>VehicleInventoryHeader</u></a>	82

<a href="#">VehiclePrice</a>	83
<a href="#">VehiclePricing</a>	83
<a href="#">VehicleWeight</a>	84
<a href="#">Verb</a>	84
<a href="#">Warehouse</a>	85
.....	
.....	
<a href="#">ActivityStatus</a>	85
<a href="#">AddressLine</a>	85
<a href="#">AddressQualifier</a>	86
<a href="#">AssigningOrganizationPartyId</a>	86
<a href="#">AssigningPartyId</a>	87
<a href="#">AxleCode</a>	88
<a href="#">BirthDate</a>	88
<a href="#">BodyStyle</a>	88
<a href="#">BorderCrossingInd</a>	89
<a href="#">BrandedTitleDate</a>	89
<a href="#">BrandedTitleInd</a>	89
<a href="#">BrandingSource</a>	90
<a href="#">BrandingStateReference</a>	90
<a href="#">CertifiedPreownedInd</a>	90
<a href="#">City</a>	91
<a href="#">Code</a>	91
<a href="#">CompanyName</a>	91
<a href="#">Condition</a>	91
<a href="#">ConfirmType</a>	92
<a href="#">ContactTelephoneNumberDescription</a>	92
<a href="#">ContactTelephoneNumberOrganizationDescription</a>	93
<a href="#">ContactTime</a>	93
<a href="#">Country</a>	93
<a href="#">County</a>	105
<a href="#">Currency</a>	106

<a href="#"><u>Date</u></a>	113
<a href="#"><u>DateTime</u></a>	113
<a href="#"><u>DBAName</u></a>	113
<a href="#"><u>DealerAssignedNumber</u></a>	114
<a href="#"><u>DealerInstallationInd</u></a>	114
<a href="#"><u>DeliveryDate</u></a>	114
<a href="#"><u>DocumentDateTime</u></a>	115
<a href="#"><u>DoorKeyNumber</u></a>	115
<a href="#"><u>DriverAction</u></a>	115
<a href="#"><u>EngineNumber</u></a>	115
<a href="#"><u>ETADate</u></a>	116
<a href="#"><u>ExpirationDate</u></a>	116
<a href="#"><u>ExteriorColor</u></a>	116
<a href="#"><u>ExteriorColorCode</u></a>	116
<a href="#"><u>FamilyName</u></a>	117
<a href="#"><u>FleetAccount</u></a>	117
<a href="#"><u>FleetPurchaseOrderNumber</u></a>	117
<a href="#"><u>FormattedName</u></a>	118
<a href="#"><u>Gender</u></a>	118
<a href="#"><u>GivenName</u></a>	118
<a href="#"><u>HoldCodeInd</u></a>	118
<a href="#"><u>HomeWork</u></a>	119
<a href="#"><u>IgnitionKeyNumber</u></a>	119
<a href="#"><u>Indicator</u></a>	120
<a href="#"><u>InteriorColor</u></a>	120
<a href="#"><u>InteriorColorCode</u></a>	120
<a href="#"><u>InvoiceDate</u></a>	120
<a href="#"><u>InvoiceNumber</u></a>	121
<a href="#"><u>IssuingState</u></a>	121
<a href="#"><u>Language</u></a>	121
<a href="#"><u>LicenseNumber</u></a>	128
<a href="#"><u>LoadNumber</u></a>	128
<a href="#"><u>Make</u></a>	129

<a href="#">Manufacturer</a>	129
<a href="#">ManufacturerInstalledInd</a>	129
<a href="#">MarketingMailInd</a>	129
<a href="#">MiddleName</a>	130
<a href="#">MileageMeasure</a>	130
<a href="#">MiscellaneousCode</a>	130
<a href="#">Model</a>	131
<a href="#">ModelDescription</a>	131
<a href="#">ModelYear</a>	131
<a href="#">Name</a>	132
<a href="#">NonUSVehicleInd</a>	132
<a href="#">Note</a>	132
<a href="#">OdometerStatus</a>	132
<a href="#">OptionName</a>	133
<a href="#">OptionNotes</a>	133
<a href="#">OptionOrigin</a>	133
<a href="#">OptionSalesCode</a>	133
<a href="#">OptionSecurityCode</a>	134
<a href="#">OptionSerialNumber</a>	134
<a href="#">OptionStockNumber</a>	134
<a href="#">OrderDate</a>	134
<a href="#">PartType</a>	135
<a href="#">PortInstalledInd</a>	135
<a href="#">PostalCode</a>	136
<a href="#">PreferredContactMethod</a>	136
<a href="#">PreferredContactMethodOrganization</a>	137
<a href="#">PreferredLanguage</a>	137
<a href="#">PriceExplanation</a>	144
<a href="#">PricingTypeSource</a>	144
<a href="#">PrimaryContactInd</a>	144
<a href="#">PrimaryDriverInd</a>	144
<a href="#">Reference</a>	145
<a href="#">ReferenceNumber</a>	145



<a href="#">RegulatoryDate</a>	145
<a href="#">RegulatoryType</a>	146
<a href="#">RejectCode</a>	146
<a href="#">RejectResponsibilityCode</a>	146
<a href="#">RelationshipCode</a>	146
<a href="#">RestrictionInd</a>	147
<a href="#">SaleClass</a>	147
<a href="#">Salutation</a>	148
<a href="#">SecondaryPassword</a>	148
<a href="#">SerialNumber</a>	148
<a href="#">ShortMfg</a>	148
<a href="#">SortName</a>	149
<a href="#">StateOrProvince</a>	149
<a href="#">StatusDate</a>	149
<a href="#">Suffix</a>	149
<a href="#">SystemVersion</a>	150
<a href="#">TargetBuildDate</a>	150
<a href="#">TaxabilityInd</a>	150
<a href="#">TaxType</a>	150
<a href="#">TaxTypeInd</a>	153
<a href="#">TelematicsServiceInd</a>	154
<a href="#">Text</a>	154
<a href="#">TransactionType</a>	154
<a href="#">TransmissionCode</a>	155
<a href="#">TransmissionType</a>	155
<a href="#">TrimCode</a>	156
<a href="#">Type</a>	157
<a href="#">UrbanizationCode</a>	157
<a href="#">URI</a>	157
<a href="#">VehicleAcquisitionDate</a>	157
<a href="#">VehicleAllocatedDate</a>	158
<a href="#">VehicleDemoInd</a>	158
<a href="#">VehicleLocation</a>	158

<a href="#">VehicleNote</a>	159
<a href="#">VehicleOrderNumber</a>	159
<a href="#">VehicleOrderType</a>	159
<a href="#">VehiclePricingType</a>	159
<a href="#">VehicleShipDate</a>	161
<a href="#">VehicleStatus</a>	161
<a href="#">VehicleStock</a>	162
<a href="#">VIN</a>	162
<a href="#">Year</a>	162
<a href="#">Fields and Global Attributes</a>	163
<a href="#">ApplicationArea</a>	163
<a href="#">Header</a>	163
<a href="#">Invoice</a>	164
<a href="#">Show</a>	165
<a href="#">ShowVehicleInventory</a>	166
<a href="#">VehicleInventory</a>	166
<a href="#">Verb</a>	167

## Show Vehicle Inventory

---

### Show Vehicle Inventory Guidelines

## Overview

This document is a guideline on how to use the Show Vehicle Inventory Business Object Document (BOD). Show Vehicle Inventory has been defined in the context of STAR for the Automotive Retail Industry. The scope of this BOD is to define the Show Vehicle Inventory process for individual consumers who service their automobiles through their OEM's authorized Dealers. The focus is on Dealer and OEM interactions, not third party organizations.

NOTE: Although this is the traditional use of the Show Vehicle Inventory, this BOD could be used to send Show Vehicle Inventory information between any two business parties.

Implementation Guidelines provide detailed information regarding the structure and meaning of the Show Vehicle Inventory BOD and corresponds directly to the Show Vehicle Inventory schema. In addition to structure and meaning, the Implementation Guidelines identify various business rules for specific fields/components that due to their nature, i.e. field interdependence, are not possible to express using schema. Please note that although these business rules are not included in the schema, they **MUST** be followed to be STAR Compliant. Therefore, the Show Vehicle Inventory Implementation Guidelines must be used in concert with the Show Vehicle Inventory schema during development and should **NOT** be considered a supplement or substitution to the schema. For more information regarding STAR XML Data Compliance, please review the STAR Data Compliance Guidelines document located on the STAR Web site.

For a copy of the corresponding Show Vehicle Inventory schema, please download the appropriate STAR schema repository from the XML portion of the STAR website ([www.starstandard.org](http://www.starstandard.org)). Prior to downloading the schema, users are encouraged to download the STAR XML Reference/Implementation document also located on the XML portion of the STAR website. This document provides an overview of the STAR BOD development methodology, how to download and read STAR schema, and various frequently asked questions related to the implementation of STAR BODs.

STAR has followed the Open Application Group's Business Object Document methodology to develop the Show Vehicle Inventory BOD. Where possible, STAR has mapped to existing OAGI fields and components. Note however that the STAR Show Vehicle Inventory BOD is unique to the Retail Automotive industry and is not an extension of any existing OAGIS BODs.

For more information on the Open Applications Group's BODs and related documentation please refer to the Open Applications Group's Web site at ([www.openapplications.org](http://www.openapplications.org)).

## Schema Field Usage

STAR uses the same Noun in the schema for all the Noun/Verb combinations of the Show Vehicle Inventory except the Get verb. Please refer to each Noun/Verb combination within this document to understand the requirements for each specific BOD. Although the Noun will always have every field defined for the Noun in the schema, each Noun/Verb combination may not use all of the fields. If a field is not used by a BOD, it will be noted in the business rules.

## Show Vehicle Inventory

---

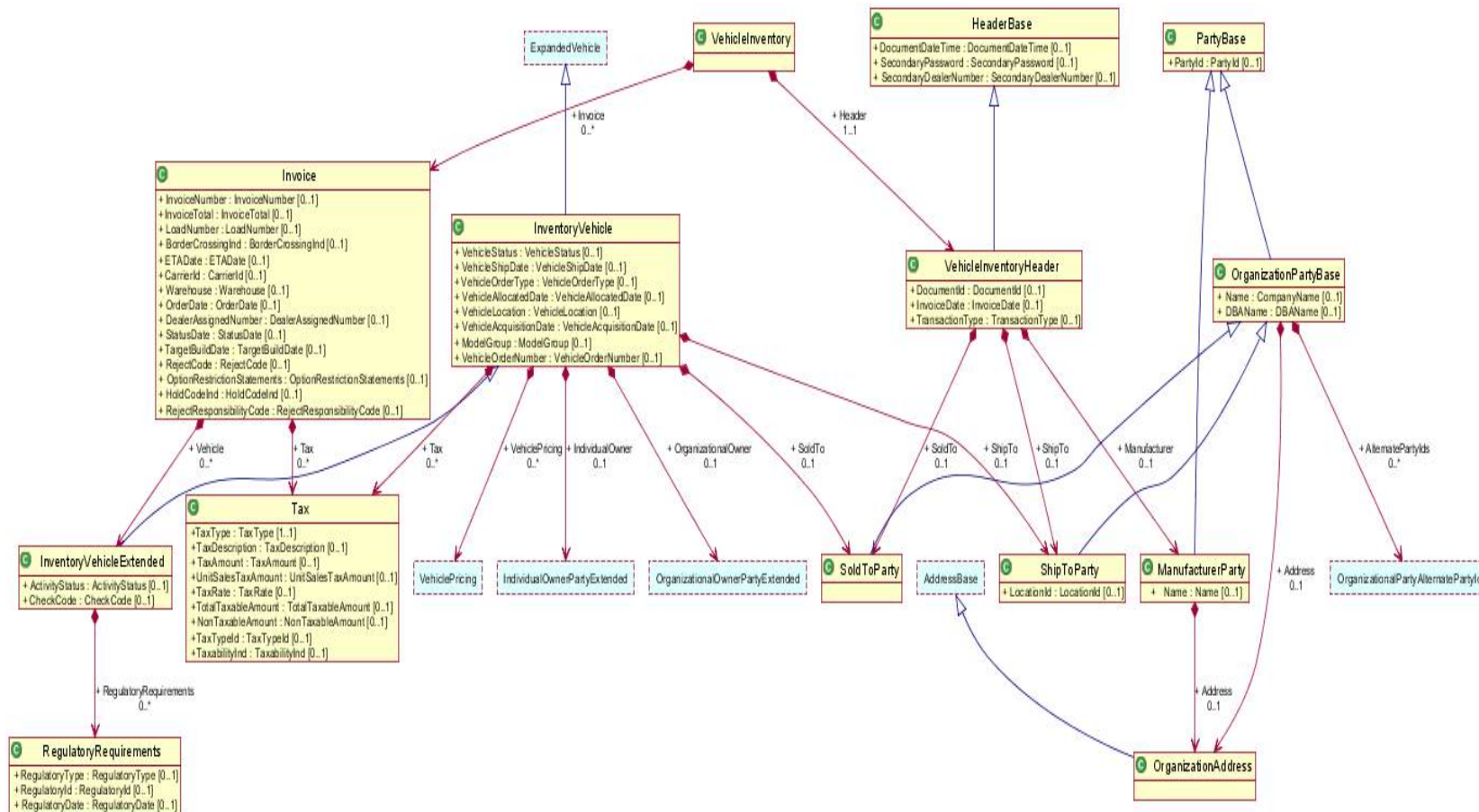
### Business Scenario

The Show Vehicle Inventory Binary Collaboration starts with the sending of Vehicle Inventory information from the OEM to the Dealer. This process occurs on demand as needed. Note: This scenario is an example of how the Vehicle Inventory BOD can be used. Implementations may vary. Note only the PartyId to be retrieved needs to be filled in the SoldToParty component.

## Show Vehicle Inventory

### Relationship Diagram

The following is a representation of the Noun for this BOD. It is a high level overview provided to give an idea of the hierarchy of the Noun's components.



### Schema Document Properties

#### Declared Namespaces

A schema can contain more than one namespace. According to Whatis.com, "In general, a namespace uniquely identifies a set of names so that there is no ambiguity when objects having different origins but the same names are mixed together." An example would be two namespaces that both defined an element called ID, without a namespace it would be impossible to determine which definition was being used.

Prefix	Namespace
<b>Default namespace</b>	<a href="http://www.starstandards.org/STAR">http://www.starstandards.org/STAR</a>
<b>xml</b>	<a href="http://www.w3.org/XML/1998/namespace">http://www.w3.org/XML/1998/namespace</a>
<b>xsd</b>	<a href="http://www.w3.org/2001/XMLSchema">http://www.w3.org/2001/XMLSchema</a>

### Components and Data Types

Global definitions include components, code lists, and data types. Components are used to build the data structures that make up a Noun and it's requirements. Data types specify the type of data that a component's fields may contain. Not all definitions are included in this documentation. Please see either the STAR Code List guideline or Data Type Guidelines for further information.

#### Address

<b>Name</b>	<b>Address</b>
<b>Abstract</b>	<b>no</b>

#### Attributes

Field / Component	Description	R/O	Business Rule
qualifier		R	

#### Data Elements and Components

Field / Component	Description	R/O	Business Rule
AddressLine	Indicates the multiple lines of an address. The first line is typically the street name and number.	R	
City	Is the City of the Address.	R	
County	County in which the Address is in.	O	
StateOrProvince	Is the State or Province of a given Address.	R	
Country	Country in which the Address is in.	R	
PostalCode	Postal Code of the Address.	R	

#### XML Instance Representation

<...
------

## Show Vehicle Inventory

```
qualifier="AddressQualifier [0..1]">
  <AddressLine> AddressLine </AddressLine> [1..*]
  <City> City </City> [1]
  <County> County </County> [0..1]
  <StateOrProvince> StateOrProvince </StateOrProvince> [1]
  <Country> Country </Country> [1]
  <PostalCode> PostalCode </PostalCode> [1]
</...>
```

### AddressBase

<b>Name</b>	<b>AddressBase</b>
<b>Abstract</b>	<b>no</b>

### Data Elements and Components

Field / Component	Description	R/O	Business Rule
AddressLine	Indicates the multiple lines of an address. The first line is typically the street name and number.	R	
City	Is the City of the Address.	R	
County	County in which the Address is in.	O	
StateOrProvince	Is the State or Province of a given Address.	R	
Country	Country in which the Address is in.	R	
PostalCode	Postal Code of the Address.	R	

### XML Instance Representation

```
<...>
  <AddressLine> AddressLine </AddressLine> [1..*]
  <City> City </City> [1]
  <County> County </County> [0..1]
  <StateOrProvince> StateOrProvince </StateOrProvince> [1]
  <Country> Country </Country> [1]
</...>
```



## Show Vehicle Inventory

```
<PostalCode> PostalCode </PostalCode> [1]
</...>
```

### AlternatePartyId

<b>Name</b>	AlternatePartyId
<b>Abstract</b>	no

#### Data Elements and Components

Field / Component	Description	R/O	Business Rule
Id	Alternate Party Identification	R	

### XML Instance Representation

```
<...>
  <Id> Id </Id> [1]
</...>
```

### Amount

Based on OAGI Amount. Simple content with the currency as an attribute

<b>Name</b>	Amount
<b>Abstract</b>	no

#### Attributes

Field / Component	Description	R/O	Business Rule
currency		R	

### XML Instance Representation

```
<...
currency="Currency [1]">
```

## Show Vehicle Inventory

xsd:decimal  
</...>

### ApplicationArea

These field(s) use this type: **ApplicationArea**.

<b>Name</b>	ApplicationArea
<b>Abstract</b>	no

### Data Elements and Components

Field / Component	Description	R/O	Business Rule
Sender	Identifies characteristics and control identifiers that relate to the application that created the Business Object Document. The sender area can indicate the logical location of the application and/or database server, the application, and the task that was processing to create the BOD.	R	
CreationDateTime	is the date time stamp that the given instance of the Business Object Document was created. This date must not be modified during the life of the Business Object Document.	R	Date/Time fields must be formatted as XML Schema Datetimes in UTC/GMT format without offsets. Example: 2003-11-05T13:15:30Z
Signature	If the BOD is to be signed the signature element is included, otherwise it is not. Signature supports any digital signature that maybe used by an implementation of OAGIS. The qualifyingAgency identifies the agency that provided the format for the signature. This element supports any digital signature specification that is available today and in the future. This is accomplished by not actually defining the content but by allowing the implementation to specify the digital signature to be used via an external XML Schema namespace declaration. The Signature element is defined to have any content from any other namespace. This allows the user to carry a digital signature in the xml instance of a BOD. The choice of which digital signature to use is left up to the user and their integration needs.	O	Optional. "qualifyingAgency" attribute.

## Show Vehicle Inventory

Field / Component	Description	R/O	Business Rule
BODId	The BODId provides a place to carry a Globally Unique Identifier (GUID) that will make each Business Object Document instance uniquely identifiable. This is a critical success factor to enable software developers to use the Globally Unique Identifier (GUID) to build the following services or capabilities: 1. Legally binding transactions, 2. Transaction logging, 3. Exception handling, 4. Re-sending, 5. Reporting, 6. Confirmations, 7. Security.	O	
Destination	Information related to the receiver of the BOD	R	See Destination Component.

### XML Instance Representation

```
<...>
  <Sender> Sender </Sender> [1]
  <CreationDateTime> DateTime </CreationDateTime> [1]
  <Signature> Signature </Signature> [0..1]
  <BODId> Code </BODId> [0..1]
  <Destination> Destination </Destination> [1]
</...>
```

### BrandedInfo

These field(s) use this type: **BrandedInfo**.

<b>Name</b>	<b>BrandedInfo</b>
<b>Abstract</b>	<b>no</b>

### Data Elements and Components

Field / Component	Description	R/O	Business Rule
BrandedTitleInd	This tag indicates if a vehicle's title has been branded. (i.e., vehicle totaled and state registration title branded as such)	O	Value: 1 - Yes. 0 - No
BrandedTitleDate	Branding Date	O	In YYYY-MM-DD format.
BrandingStateCode	Branding State Code	O	

## Show Vehicle Inventory

Field / Component	Description	R/O	Business Rule
BrandingStateReference	Branding State Reference Number	O	
BrandingSource	Branding source Ã#Â¢Â#Â# (i.e., source who says that the vehicle is branded)	O	

### XML Instance Representation

```
<...>
  <BrandedTitleInd> BrandedTitleInd </BrandedTitleInd> [0..1]
  <BrandedTitleDate> BrandedTitleDate </BrandedTitleDate> [0..1]
  <BrandingStateCode> BrandingStateCode </BrandingStateCode> [0..1]
  <BrandingStateReference> BrandingStateReference </BrandingStateReference> [0..1]
  <BrandingSource> BrandingSource </BrandingSource> [0..1]
</...>
```

### BrandingStateCode

These field(s) use this type: **BrandingStateCode**.

Branding State Code

<b>Name</b>	<b>BrandingStateCode</b>
<b>Abstract</b>	<b>no</b>

### XML Instance Representation

```
<...>
  StateOrProvince
</...>
```

### BusinessObjectDocument

<b>Name</b>	<b>BusinessObjectDocument</b>
<b>Abstract</b>	<b>no</b>

## Show Vehicle Inventory

### Attributes

Field / Component	Description	R/O	Business Rule
revision	This should contain the STAR repository version in the following recommended format. 4.2.1_M20080416. Where the first part indicates the version of the STAR repository and anything after the _ indicates the Milestone build that is being used. If referring to an official published version then only the STAR Repository version is required.	O	
release	Indicates the OAGIS release that this BOD belongs.	O	
environment	Indicates whether this BOD is being sent in a "Test" or a "Production" mode. If the BOD is being sent in a test mode, it's information should not affect the business operation. However, if the BOD is sent in "Production" mode it is assumed that all test has been complete and the contents of the BOD are to affect the operation of the receiving business application(s).	O	
lang	Indicates the language that the contents of the BOD is in unless otherwise stated.	O	
bodVersion	Deprecated as of STAR 4.2.2. It is recommended to use the revision attribute to identify the repository and the noun. May be removed in a new major version of the STAR repository. Indicates the version number of the BOD.	O	

### Data Elements and Components

Field / Component	Description	R/O	Business Rule
ApplicationArea	Provides the information that an application may need to know in order to communicate in an integration of two or more business applications. The ApplicationArea is used at the applications layer of communication. While the integration frameworks web services and middleware provide the communication layer that OAGIS operates on top of. Provides the information that an application may need to know in order to communicate in an integration of two or more business applications. The ApplicationArea is used at the applications layer of communication. While the integration frameworks web services and middleware provide the communication layer that OAGIS operates on top of.	R	

## Show Vehicle Inventory

---

### XML Instance Representation

```
<...  
  revision="Text [0..1]"  
  release="8.1-Lite [0..1]"  
  environment="Text [0..1]"  
  lang="Language [0..1]"  
  bodVersion="Text [0..1]">  
  <ApplicationArea> ... </ApplicationArea> [1]  
</...>
```

### CarrierId

These field(s) use this type: **CarrierId**.

Carrier Code

<b>Name</b>	CarrierId
<b>Abstract</b>	no

### XML Instance Representation

```
<...>  
  Id  
</...>
```

### CheckCode

These field(s) use this type: **CheckCode**.

Checksum Ex: value for Model number and serial number combination

<b>Name</b>	CheckCode
<b>Abstract</b>	no

### XML Instance Representation

```
<...>
```

## Show Vehicle Inventory

Count  
</...>

### CodeType

Unique code name

<b>Name</b>	<b>CodeType</b>
<b>Abstract</b>	no

### Attributes

Field / Component	Description	R/O	Business Rule
listID		O	
listName		O	
listAgencyID		O	
listAgencyName		O	
listVersionID		O	
listURI		O	

### XML Instance Representation

```
<...  
listID="xsd:token [0..1]"  
listName="xsd:string [0..1]"  
listAgencyID="xsd:token [0..1]"  
listAgencyName="xsd:string [0..1]"  
listVersionID="xsd:token [0..1]"  
listURI="xsd:anyURI [0..1]">  
  xsd:string  
</...>
```

### ConfirmableVerb

## Show Vehicle Inventory

<b>Name</b>	<b>ConfirmableVerb</b>
<b>Abstract</b>	no

### Attributes

Field / Component	Description	R/O	Business Rule
confirm		R	

### Data Elements and Components

Field / Component	Description	R/O	Business Rule
Verb		R	

### XML Instance Representation

```
<...  
confirm="ConfirmType [0..1]"/>
```

## ContactBase

<b>Name</b>	<b>ContactBase</b>
<b>Abstract</b>	no

### Data Elements and Components

Field / Component	Description	R/O	Business Rule
Telephone	Contact telephone numbers	O	
EMailAddress	Contact Email addresses	O	
Fax	Contact Fax numbers	O	
PreferredContactMethod	Preferred contact method	O	
ContactTime	Preferred contact time (i.e. Best day/time to reach the contact.	O	



## Show Vehicle Inventory

Field / Component	Description	R/O	Business Rule
PrimaryContactInd	Indicates if contact is primary contact	O	

### XML Instance Representation

```
<...>
  <Telephone> IndividualPartyContactTelephoneNumber </Telephone> [0..*]
  <EMailAddress> IndividualPartyContactEMail </EMailAddress> [0..*]
  <Fax> IndividualPartyContactFax </Fax> [0..*]
  <PreferredContactMethod> PreferredContactMethod </PreferredContactMethod> [0..1]
  <ContactTime> ContactTime </ContactTime> [0..1]
  <PrimaryContactInd> PrimaryContactInd </PrimaryContactInd> [0..1]
</...>
```

### Count

Simple quantity type with no attributes

Name	Count
Abstract	no

### XML Instance Representation

```
<...>
  xsd:integer
</...>
```

## DeliveryMileage

These field(s) use this type: **DeliveryMileage**.

Odometer reading of vehicle at time of delivery

Name	DeliveryMileage
Abstract	no

### XML Instance Representation

## Show Vehicle Inventory

---

```
<...  
uom="MileageMeasure [0..1]">  
  Mileage  
</...>
```

### Description

Description

Name	Description
Abstract	no

### Attributes

Field / Component	Description	R/O	Business Rule
language	The ISO language code that the description is written.	O	

### XML Instance Representation

```
<...  
language="Language [0..1]">  
  xsd:string  
</...>
```

### Destination

These field(s) use this type: Destination.

Name	Destination
Abstract	no

### Data Elements and Components

## Show Vehicle Inventory

Field / Component	Description	R/O	Business Rule
DestinationNameCode	Code for destination of file (i.e.Short Manufacturer or DSP code)	O	Must use a valid code from the ShortMfg/RSP list on <a href="http://www.starstandards.org">http://www.starstandards.org</a>
DestinationURI	Physical address of the destination	O	
DestinationSoftwareCode	Additional information about the destination application	O	
DestinationSoftware	For which software destination file is intended (may not be known).	O	
DealerNumber	Target Dealer Code receiving information	O	
StoreNumber	Dealer code store number (DMS assigned)	O	
AreaNumber	Dealer code area number (DMS vendor assigned)	O	
DealerCountry	Target Dealer country location	O	
PartyId	The Party Id field uniquely identifies the Receiver of the message. This element can be used for parties within the Automotive Community as well as external parties. Party Id is not intended as a replacement for the Dealer Number. Suggested formats for OEMs or other large institutions include: DUNs Number, ShortMfgCode + DUNs, or ShortMfgCode. The suggested format for Dealers is: ShortMfgCode+Dealer Number.	O	
LocationId	The Location Id field uniquely identifies the location of the Receiver of a O message. This Id may be aligned with a physical address or data centers. This field provides an additional level of granularity beyond the usage of the Party Id for additional routing and deliver of data.		
ServiceId	The Service Id field identifies the particular service to which a message is being sent, e.g., an inventory service.	O	

### XML Instance Representation

```

<...>
  <DestinationNameCode> ShortMfg </DestinationNameCode> [0..1]
  <DestinationURI> URI </DestinationURI> [0..1]
  <DestinationSoftwareCode> Text </DestinationSoftwareCode> [0..1]
  <DestinationSoftware> Text </DestinationSoftware> [0..1]

```

## Show Vehicle Inventory

---

```
<DealerNumber> PartyId </DealerNumber> [0..1]
<StoreNumber> Text </StoreNumber> [0..1]
<AreaNumber> Text </AreaNumber> [0..1]
<DealerCountry> Country </DealerCountry> [0..1]
<PartyId> PartyId </PartyId> [0..1]
<LocationId> LocationId </LocationId> [0..1]
<ServiceId> ServiceId </ServiceId> [0..1]
</...>
```

### DocumentId

These field(s) use this type: **DocumentId**.

Is the identifier for the document.

<b>Name</b>	DocumentId
<b>Abstract</b>	no

### XML Instance Representation

```
<...>
  Id
</...>
```

### DoorsQuantity

These field(s) use this type: **DoorsQuantity**.

Number of doors on vehicle

<b>Name</b>	DoorsQuantity
<b>Abstract</b>	no

### XML Instance Representation

```
<...>
  Count
</...>
```

## Show Vehicle Inventory

### ExpandedOption

These field(s) use this type: Option.

<b>Name</b>	ExpandedOption
<b>Abstract</b>	no

### Data Elements and Components

Field / Component	Description	R/O	Business Rule
OptionType	An option type for a vehicle or other component. Usually references an OEM supplied list of codes.	O	
OptionName	Name of vehicle option	O	
OptionStockNumber	Stock Number of Vehicle Option	O	
Manufacturer	Manufacturer of Vehicle Option	O	
OptionPrice	Price of Vehicle Option	O	
OptionSecurityCode	Security code to unlock option. (i.e, radio code)n	O	
ManufacturerInstalledInd	Indicates manufacturer-installed accessories	O	
OptionCost	Actual Dealer cost of option	O	
OptionMSRP	Option MSRP	O	
OptionOrigin	Identifies the option installer	O	
OptionSerialNumber	Serial number of Option	O	
ItemId	Part number identifier of Option	O	
PartType	Specifies whether the parts are indicated by manufacturer part code or Part Number	O	
OptionNotes	Free form text related to option	O	

## Show Vehicle Inventory

Field / Component	Description	R/O	Business Rule
DealerInstallationInd	Dealer installed accessories, before delivery of vehicle - Could be used for new or used vehicle, if applicable	O	
MiscellaneousCode	Miscellaneous codes relating to vehicle (i.e., sales codes)	O	
OptionPackageId	Option package number or identifier used as a method for grouping option package items from manufacturer(s) Ex: OptPkg1,cost,OptPkg1; Item1,nocost,OptPkg1; Item2,nocost,Optpkg1; Item3,cost,nullOptPkg; OptPkg2,cost,Optpkg2; Item5,nocost,OptPkg2Ã#Â¢Ã#Â!Ã#Â!	O	
OptionSalesCode	Further definition of accessories and option packages - Indicates whether O ordered option, special package, standard, etc.		
PortInstalledInd	Indicates Port-installed accessories	O	

### XML Instance Representation

```

<...>
  <OptionType> OptionType </OptionType> [0..1]
  <OptionName> OptionName </OptionName> [0..1]
  <OptionStockNumber> OptionStockNumber </OptionStockNumber> [0..1]
  <Manufacturer> Manufacturer </Manufacturer> [0..1]
  <OptionPrice> OptionPrice </OptionPrice> [0..1]
  <OptionSecurityCode> OptionSecurityCode </OptionSecurityCode> [0..1]
  <ManufacturerInstalledInd> ManufacturerInstalledInd </ManufacturerInstalledInd> [0..1]
  <OptionCost> OptionCost </OptionCost> [0..1]
  <OptionMSRP> OptionMSRP </OptionMSRP> [0..1]
  <OptionOrigin> OptionOrigin </OptionOrigin> [0..1]
  <OptionSerialNumber> OptionSerialNumber </OptionSerialNumber> [0..1]
  <ItemId> ItemId </ItemId> [0..1]
  <PartType> PartType </PartType> [0..1]
  <OptionNotes> OptionNotes </OptionNotes> [0..1]
  <DealerInstallationInd> DealerInstallationInd </DealerInstallationInd> [0..1]
  <MiscellaneousCode> MiscellaneousCode </MiscellaneousCode> [0..*]
  <OptionPackageId> OptionPackageId </OptionPackageId> [0..1]
  <OptionSalesCode> OptionSalesCode </OptionSalesCode> [0..1]
  <PortInstalledInd> PortInstalledInd </PortInstalledInd> [0..1]
</...>

```

## Show Vehicle Inventory

### ExpandedVehicle

Name	ExpandedVehicle
Abstract	no

#### Data Elements and Components

Field / Component	Description	R/O	Business Rule
Model	Manufacturer-assigned model code of vehicle - Usually available in the VIN number (use NCIC code)	O	
ModelYear	Vehicle designated model year	O	
ModelDescription	Descriptive vehicle model name	O	
Make	Vehicle make code - Usually available in the VIN number (use NCIC code).	O	
SaleClass	Class of Sale	O	
Condition	Condition of Vehicle - Example: Excellent, Good, Fair, Poor, Unknown	O	
CertifiedPreownedInd	Identifies as a certified Pre-Owned Vehicle	O	
VehicleNote	Any vehicle related notes	O	
VIN	Federally defined 17 position vehicle identification number	O	
DeliveryMileage	Odometer reading of vehicle at time of delivery	O	
VehicleStock	Dealer assigned vehicle stock number	O	
TrimCode	Manufacturer assigned trim code	O	
DoorsQuantity	Number of doors on vehicle	O	
BodyStyle	Manufacturer-assigned vehicle body style	O	
InteriorColor	Vehicle Interior Color(s)	O	

## Show Vehicle Inventory

Field / Component	Description	R/O	Business Rule
ExteriorColor	Vehicle Exterior Color(s)	O	
TransmissionType	Vehicle Transmission type	O	
OdometerStatus	Status of odometer at trade-in. Example:: Replaced, Tampered, Miles> 90,000, etc.	O	
NonUSVehicleInd	Indicates whether the vehicle was produced for the United States or not	O	
VehicleDemoInd	Indicates whether vehicle was ever a demo	O	
LicenseNumber	State License plate number of vehicle	O	
BrandedInfo	Vehicle Branding Information	O	
RestrictionInd	Indication that vehicle has restrictions on its use	O	
RestrictionDescription	Description of vehicle use restrictions	O	
TelematicsServiceInd	Indication whether Telematics Service Subscription is turned on	O	
Option	Vehicle Options	O	
TransmissionCode	Transmission Serial Number	O	
DeliveryDate	The date of original retail vehicle sale	O	
EngineNumber	Serial number of the engine if vehicle not made for US sale	O	
IgnitionKeyNumber	Vehicle Ignition Key Number	O	
AxleCode	The code on the axle of the vehicle.	O	
FleetAccount	Manufacturer defined fleet account number	O	
FleetVehicleId	Uniquely identifies the vehicle as part of a fleet company	O	
FleetPurchaseOrderNumber	Fleet Purchase Order Number vehicle was purchased under	O	
DoorKeyNumber	Door key number	O	
VehicleWeight	Vehicle weight	O	
ExteriorColorCode	Vehicle exterior color code	O	



## Show Vehicle Inventory

Field / Component	Description	R/O	Business Rule
InteriorColorCode	Vehicle Interior color code	O	

### XML Instance Representation

```

<...>
  <Model> Model </Model> [0..1]
  <ModelYear> ModelYear </ModelYear> [0..1]
  <ModelDescription> ModelDescription </ModelDescription> [0..1]
  <Make> Make </Make> [0..1]
  <SaleClass> SaleClass </SaleClass> [0..1]
  <Condition> Condition </Condition> [0..1]
  <CertifiedPreownedInd> CertifiedPreownedInd </CertifiedPreownedInd> [0..1]
  <VehicleNote> VehicleNote </VehicleNote> [0..*]
  <VIN> VIN </VIN> [0..1]
  <DeliveryMileage> DeliveryMileage </DeliveryMileage> [0..1]
  <VehicleStock> VehicleStock </VehicleStock> [0..1]
  <TrimCode> TrimCode </TrimCode> [0..1]
  <DoorsQuantity> DoorsQuantity </DoorsQuantity> [0..1]
  <BodyStyle> BodyStyle </BodyStyle> [0..1]
  <InteriorColor> InteriorColor </InteriorColor> [0..*]
  <ExteriorColor> ExteriorColor </ExteriorColor> [0..*]
  <TransmissionType> TransmissionType </TransmissionType> [0..1]
  <OdometerStatus> OdometerStatus </OdometerStatus> [0..1]
  <NonUSVehicleInd> NonUSVehicleInd </NonUSVehicleInd> [0..1]
  <VehicleDemoInd> VehicleDemoInd </VehicleDemoInd> [0..1]
  <LicenseNumber> LicenseNumber </LicenseNumber> [0..1]
  <BrandedInfo> BrandedInfo </BrandedInfo> [0..1]
  <RestrictionInd> RestrictionInd </RestrictionInd> [0..1]
  <RestrictionDescription> RestrictionDescription </RestrictionDescription> [0..1]
  <TelematicsServiceInd> TelematicsServiceInd </TelematicsServiceInd> [0..1]
  <Option> ExpandedOption </Option> [0..*]
  <TransmissionCode> TransmissionCode </TransmissionCode> [0..1]
  <DeliveryDate> DeliveryDate </DeliveryDate> [0..1]
  <EngineNumber> EngineNumber </EngineNumber> [0..1]
  <IgnitionKeyNumber> IgnitionKeyNumber </IgnitionKeyNumber> [0..1]
  <AxleCode> AxleCode </AxleCode> [0..1]

```

## Show Vehicle Inventory

```
<FleetAccount> FleetAccount </FleetAccount> [0..1]
<FleetVehicleId> FleetVehicleId </FleetVehicleId> [0..1]
<FleetPurchaseOrderNumber> FleetPurchaseOrderNumber </FleetPurchaseOrderNumber> [0..1]
<DoorKeyNumber> DoorKeyNumber </DoorKeyNumber> [0..1]
<VehicleWeight> VehicleWeight </VehicleWeight> [0..1]
<ExteriorColorCode> ExteriorColorCode </ExteriorColorCode> [0..*]
<InteriorColorCode> InteriorColorCode </InteriorColorCode> [0..*]
</...>
```

### FleetVehicleId

These field(s) use this type: **FleetVehicleId**.

Uniquely identifies the vehicle as part of a fleet company

Name	FleetVehicleId
Abstract	no

### XML Instance Representation

```
<...>
  Id
</...>
```

### HeaderBase

Used on all STAR BODs

Name	HeaderBase
Abstract	no

### Data Elements and Components

## Show Vehicle Inventory

Field / Component	Description	R/O	Business Rule
DocumentDateTime	Is the date and time the document was last created. This is not the date and time that the BOD message instance was created.	O	Date/Time fields must be formatted as XML Schema DateTimes in UTC/GMT format without offsets. Example: 2003-11-05T13:15:30Z
SecondaryPassword	Secondary password used to validate access to the dealer information	O	(INACTIVE)
SecondaryDealerNumber	Identifies secondary dealer number if different than primary "Dealer Number"	O	(INACTIVE)

### XML Instance Representation

```
<...>
  <DocumentDateTime> DocumentDateTime </DocumentDateTime> [0..1]
  <SecondaryPassword> SecondaryPassword </SecondaryPassword> [0..1]
  <SecondaryDealerNumber> SecondaryDealerNumber </SecondaryDealerNumber> [0..1]
</...>
```

### Id

These field(s) use this type: **AuthorizationId,Id.**

Party Identification number

<b>Name</b>	<b>Id</b>
<b>Abstract</b>	<b>no</b>

### XML Instance Representation

```
<...>
  xsd:string
</...>
```

### IndividualOwnerParty

<b>Name</b>	<b>IndividualOwnerParty</b>
-------------	-----------------------------

## Show Vehicle Inventory

**Abstract** no

### Data Elements and Components

Field / Component	Description	R/O	Business Rule
PartyId	Party Identification Number	O	
AlternatePartyIds	Individual party alternate party Identification	O	
PersonName	Individual party name	O	
Address	Individual party address	O	
Contact	Individual party contact information	O	
RelationshipCode	Indicates the Business Party's relationship to the primary Party (e.g., mother, father, husband, etc.)	O	

### XML Instance Representation

```
<...>
  <PartyId> PartyId </PartyId> [0..1]
  <AlternatePartyIds> IndividualPartyAlternatePartyId </AlternatePartyIds> [0..*]
  <PersonName> IndividualPartyPersonName </PersonName> [0..1]
  <Address> IndividualPartyAddress </Address> [0..*]
  <Contact> IndividualPartyContact </Contact> [0..1]
  <RelationshipCode> RelationshipCode </RelationshipCode> [0..1]
</...>
```

### IndividualOwnerPartyExtended

These field(s) use this type: IndividualOwner.

**Name** IndividualOwnerPartyExtended

**Abstract** no

### Data Elements and Components

## Show Vehicle Inventory

Field / Component	Description	R/O	Business Rule
PartyId	Party Identification Number	O	
AlternatePartyIds	Individual party alternate party Identification	O	
PersonName	Individual party name	O	
Address	Individual party address	O	
Contact	Individual party contact information	O	
RelationshipCode	Indicates the Business Party's relationship to the primary Party (e.g., mother, father, husband, etc.)	O	
Demographics	Individual party demographic information	O	
MarketingMailInd	Indicates customers whom have requested no marketing mail	O	Values: 1 - Can send mail to. 0 - Can not send mail to.
PrimaryDriverInd	Identifies customer as primary driver	O	Values: 1 - Primary Driver, 0 - Not primary driver.
DriverAction	Driver action (Ex: Drop-Off, Pick-Up, etc)	O	Service action related to this RO (Ex: Drop-Off, Pick-Up, etc)

### XML Instance Representation

```

<...>
  <PartyId> PartyId </PartyId> [0..1]
  <AlternatePartyIds> IndividualPartyAlternatePartyId </AlternatePartyIds> [0..*]
  <PersonName> IndividualPartyPersonName </PersonName> [0..1]
  <Address> IndividualPartyAddress </Address> [0..*]
  <Contact> IndividualPartyContact </Contact> [0..1]
  <RelationshipCode> RelationshipCode </RelationshipCode> [0..1]
  <Demographics> MinimalDemographics </Demographics> [0..1]
  <MarketingMailInd> MarketingMailInd </MarketingMailInd> [0..1]
  <PrimaryDriverInd> PrimaryDriverInd </PrimaryDriverInd> [0..1]
  <DriverAction> DriverAction </DriverAction> [0..1]
</...>

```

## Show Vehicle Inventory

### IndividualPartyAddress

These field(s) use this type: Address.

<b>Name</b>	IndividualPartyAddress
<b>Abstract</b>	no

#### Data Elements and Components

Field / Component	Description	R/O	Business Rule
AddressLine	Indicates the multiple lines of an address. The first line is typically the street name and number.	R	
City	Is the City of the Address.	R	
County	County in which the Address is in.	O	
StateOrProvince	Is the State or Province of a given Address.	R	
Country	Country in which the Address is in.	R	
PostalCode	Postal Code of the Address.	R	
UrbanizationCode	Geographic definition of a metropolitan or suburban area	O	

#### XML Instance Representation

```
<...  
  qualifier="AddressQualifier [0..1]">  
    <AddressLine> AddressLine </AddressLine> [1..*]  
    <City> City </City> [1]  
    <County> County </County> [0..1]  
    <StateOrProvince> StateOrProvince </StateOrProvince> [1]  
    <Country> Country </Country> [1]  
    <PostalCode> PostalCode </PostalCode> [1]  
    <UrbanizationCode> UrbanizationCode </UrbanizationCode> [0..1]  
  </...>
```

## Show Vehicle Inventory

### IndividualPartyAlternatePartyId

These field(s) use this type: AlternatePartyIds.

<b>Name</b>	IndividualPartyAlternatePartyId
<b>Abstract</b>	no

#### Data Elements and Components

Field / Component	Description	R/O	Business Rule
Id	Alternate Party Identification	R	
AssigningPartyId	Agency or entity that validates the Party Id	R	
IssuingState	Indicates that State where the license was issued.	O	
ExpirationDate	Expiration date of the alternate party id (e.g., Driver's License expiration date).	O	

#### XML Instance Representation

```
<...>
  <Id> Id </Id> [1]
  <AssigningPartyId> AssigningPartyId </AssigningPartyId> [1]
  <IssuingState> IssuingState </IssuingState> [0..1]
  <ExpirationDate> ExpirationDate </ExpirationDate> [0..1]
</...>
```

### IndividualPartyBase

<b>Name</b>	IndividualPartyBase
<b>Abstract</b>	no

#### Data Elements and Components

## Show Vehicle Inventory

Field / Component	Description	R/O	Business Rule
PartyId	Party Identification Number	O	
AlternatePartyIds	Individual party alternate party Identification	O	
PersonName	Individual party name	O	
Address	Individual party address	O	

### XML Instance Representation

```
<...>
  <PartyId> PartyId </PartyId> [0..1]
  <AlternatePartyIds> IndividualPartyAlternatePartyId </AlternatePartyIds> [0..*]
  <PersonName> IndividualPartyPersonName </PersonName> [0..1]
  <Address> IndividualPartyAddress </Address> [0..*]
</...>
```

### IndividualPartyContact

These field(s) use this type: Contact.

<b>Name</b>	<b>IndividualPartyContact</b>
<b>Abstract</b>	<b>no</b>

### Data Elements and Components

Field / Component	Description	R/O	Business Rule
Telephone	Contact telephone numbers	O	
EMailAddress	Contact Email addresses	O	
Fax	Contact Fax numbers	O	
PreferredContactMethod	Preferred contact method	O	
ContactTime	Preferred contact time (i.e. Best day/time to reach the contact.	O	
PrimaryContactInd	Indicates if contact is primary contact	O	



## Show Vehicle Inventory

Field / Component	Description	R/O	Business Rule
PersonName	Contact name	O	

### XML Instance Representation

```
<...>
  <Telephone> IndividualPartyContactTelephoneNumber </Telephone> [0..*]
  <EMailAddress> IndividualPartyContactEMail </EMailAddress> [0..*]
  <Fax> IndividualPartyContactFax </Fax> [0..*]
  <PreferredContactMethod> PreferredContactMethod </PreferredContactMethod> [0..1]
  <ContactTime> ContactTime </ContactTime> [0..1]
  <PrimaryContactInd> PrimaryContactInd </PrimaryContactInd> [0..1]
  <PersonName> IndividualPartyPersonName </PersonName> [0..1]
</...>
```

### IndividualPartyContactEMail

These field(s) use this type: **EMailAddress**.

Individual Party email

<b>Name</b>	IndividualPartyContactEMail
<b>Abstract</b>	no

### Attributes

Field / Component	Description	R/O	Business Rule
desc		R	

### XML Instance Representation

```
<...
desc="HomeWork [0..1]">
  xsd:string
</...>
```

## Show Vehicle Inventory

---

### IndividualPartyContactFax

These field(s) use this type: **Fax.**

Individual Party Fax number

<b>Name</b>	IndividualPartyContactFax
<b>Abstract</b>	no

#### Attributes

Field / Component	Description	R/O	Business Rule
desc		R	

### XML Instance Representation

```
<...  
desc="HomeWork [0..1]">  
  xsd:string  
</...>
```

### IndividualPartyContactTelephoneNumber

These field(s) use this type: **Telephone.**

IndividualParty telephone number

<b>Name</b>	IndividualPartyContactTelephoneNumber
<b>Abstract</b>	no

#### Attributes

Field / Component	Description	R/O	Business Rule
desc		R	
exten		R	

## Show Vehicle Inventory

### XML Instance Representation

```
<...  
desc="ContactTelephoneNumberDescription [0..1]"  
exten="Note [0..1]">  
  xsd:string  
</...>
```

### IndividualPartyPersonName

These field(s) use this type: PersonName,PersonName.

<b>Name</b>	<b>IndividualPartyPersonName</b>
<b>Abstract</b>	<b>no</b>

### Data Elements and Components

Field / Component	Description	R/O	Business Rule
Salutation	Title or greeting of business party	O	
GivenName	First Name of business party	R	
MiddleName	Middle Initial of business party	O	
FamilyName	Last Name of business party	R	
Suffix	Business Party name suffix designation if individual Ex: Sr, Jr, III, etc.	O	
FormattedName	Full Name of business party. Format for name should be "First Last" with no commas between first and last name	O	Format should be 'First Last' with no commas between first and last name.
SortName	Index name used as a sort for report purposes	O	

### XML Instance Representation

```
<...>  
  <Salutation> Salutation </Salutation> [0..1]  
  <GivenName> GivenName </GivenName> [1]  
  <MiddleName> MiddleName </MiddleName> [0..1]
```

## Show Vehicle Inventory

```
<FamilyName> FamilyName </FamilyName> [1]
<Suffix> Suffix </Suffix> [0..1]
<FormattedName> FormattedName </FormattedName> [0..1]
<SortName> SortName </SortName> [0..1]
</...>
```

## InventoryVehicle

<b>Name</b>	<b>InventoryVehicle</b>
<b>Abstract</b>	<b>no</b>

### Data Elements and Components

Field / Component	Description	R/O	Business Rule
Model	Manufacturer-assigned model code of vehicle - Usually available in the VIN number (use NCIC code)	O	
ModelYear	Vehicle designated model year	O	
ModelDescription	Descriptive vehicle model name	O	
Make	Vehicle make code - Usually available in the VIN number (use NCIC code).	O	
SaleClass	Class of Sale	O	
Condition	Condition of Vehicle - Example: Excellent, Good, Fair, Poor, Unknown	O	
CertifiedPreownedInd	Identifies as a certified Pre-Owned Vehicle	O	
VehicleNote	Any vehicle related notes	O	
VIN	Federally defined 17 position vehicle identification number	O	
DeliveryMileage	Odometer reading of vehicle at time of delivery	O	
VehicleStock	Dealer assigned vehicle stock number	O	
TrimCode	Manufacturer assigned trim code	O	

## Show Vehicle Inventory

Field / Component	Description	R/O	Business Rule
DoorsQuantity	Number of doors on vehicle	O	
BodyStyle	Manufacturer-assigned vehicle body style	O	
InteriorColor	Vehicle Interior Color(s)	O	
ExteriorColor	Vehicle Exterior Color(s)	O	
TransmissionType	Vehicle Transmission type	O	
OdometerStatus	Status of odometer at trade-in. Example:: Replaced, Tampered, Miles> 90,000, etc.	O	
NonUSVehicleInd	Indicates whether the vehicle was produced for the United States or not	O	
VehicleDemoInd	Indicates whether vehicle was ever a demo	O	
LicenseNumber	State License plate number of vehicle	O	
BrandedInfo	Vehicle Branding Information	O	
RestrictionInd	Indication that vehicle has restrictions on its use	O	
RestrictionDescription	Description of vehicle use restrictions	O	
TelematicsServiceInd	Indication whether Telematics Service Subscription is turned on	O	
Option	Vehicle Options	O	
TransmissionCode	Transmission Serial Number	O	
DeliveryDate	The date of original retail vehicle sale	O	
EngineNumber	Serial number of the engine if vehicle not made for US sale	O	
IgnitionKeyNumber	Vehicle Ignition Key Number	O	
AxleCode	The code on the axle of the vehicle.	O	
FleetAccount	Manufacturer defined fleet account number	O	
FleetVehicleId	Uniquely identifies the vehicle as part of a fleet company	O	
FleetPurchaseOrderNumber	Fleet Purchase Order Number vehicle was purchased under	O	

## Show Vehicle Inventory

Field / Component	Description	R/O	Business Rule
DoorKeyNumber	Door key number	O	
VehicleWeight	Vehicle weight	O	
ExteriorColorCode	Vehicle exterior color code	O	
InteriorColorCode	Vehicle Interior color code	O	
VehicleStatus	Vehicle status code - Example status could be Built, Scheduled, Shipped, O In-Transit, Sold, etc.	O	
VehicleShipDate	Date shipped from warehouse or distribution center	O	In YYYY-MM-DD format.
VehicleOrderType	Identifies vehicle Invoice order type	O	
VehicleAllocatedDate	Date vehicle was allocated and/or a delivery work order was cut	O	In YYYY-MM-DD format.
VehicleLocation	Indicates the physical location of the vehicle	O	
VehicleAcquisitionDate	Actual date vehicle was acquired by Dealership	O	In YYYY-MM-DD format.
VehiclePricing	Vehicle Pricing	O	Value: MSRP, HoldBack, Destination / Handling, Group Fund Price, Wholesale Price, Actual Cash Value, Total Option Price, Total Option Cost
ModelGroup	Grouping of similar models for order management purposes	O	
IndividualOwner	Individual who owns the vehicle	O	
OrganizationalOwner	Organization that owns the vehicle	O	
Tax	Vehicle Tax	O	Value: Amount
SoldTo	Business party who purchased the vehicle(s)	O	
ShipTo	Business party who the vehicle(s) was shipped to	O	
VehicleOrderNumber	Vehicle Order Number (VON)	O	

## Show Vehicle Inventory

---

### XML Instance Representation

```
<...>
  <Model> Model </Model> [0..1]
  <ModelYear> ModelYear </ModelYear> [0..1]
  <ModelDescription> ModelDescription </ModelDescription> [0..1]
  <Make> Make </Make> [0..1]
  <SaleClass> SaleClass </SaleClass> [0..1]
  <Condition> Condition </Condition> [0..1]
  <CertifiedPreownedInd> CertifiedPreownedInd </CertifiedPreownedInd> [0..1]
  <VehicleNote> VehicleNote </VehicleNote> [0..*]
  <VIN> VIN </VIN> [0..1]
  <DeliveryMileage> DeliveryMileage </DeliveryMileage> [0..1]
  <VehicleStock> VehicleStock </VehicleStock> [0..1]
  <TrimCode> TrimCode </TrimCode> [0..1]
  <DoorsQuantity> DoorsQuantity </DoorsQuantity> [0..1]
  <BodyStyle> BodyStyle </BodyStyle> [0..1]
  <InteriorColor> InteriorColor </InteriorColor> [0..*]
  <ExteriorColor> ExteriorColor </ExteriorColor> [0..*]
  <TransmissionType> TransmissionType </TransmissionType> [0..1]
  <OdometerStatus> OdometerStatus </OdometerStatus> [0..1]
  <NonUSVehicleInd> NonUSVehicleInd </NonUSVehicleInd> [0..1]
  <VehicleDemoInd> VehicleDemoInd </VehicleDemoInd> [0..1]
  <LicenseNumber> LicenseNumber </LicenseNumber> [0..1]
  <BrandedInfo> BrandedInfo </BrandedInfo> [0..1]
  <RestrictionInd> RestrictionInd </RestrictionInd> [0..1]
  <RestrictionDescription> RestrictionDescription </RestrictionDescription> [0..1]
  <TelematicsServiceInd> TelematicsServiceInd </TelematicsServiceInd> [0..1]
  <Option> ExpandedOption </Option> [0..*]
  <TransmissionCode> TransmissionCode </TransmissionCode> [0..1]
  <DeliveryDate> DeliveryDate </DeliveryDate> [0..1]
  <EngineNumber> EngineNumber </EngineNumber> [0..1]
  <IgnitionKeyNumber> IgnitionKeyNumber </IgnitionKeyNumber> [0..1]
  <AxleCode> AxleCode </AxleCode> [0..1]
  <FleetAccount> FleetAccount </FleetAccount> [0..1]
  <FleetVehicleId> FleetVehicleId </FleetVehicleId> [0..1]
  <FleetPurchaseOrderNumber> FleetPurchaseOrderNumber </FleetPurchaseOrderNumber> [0..1]
```

## Show Vehicle Inventory

```
<DoorKeyNumber> DoorKeyNumber </DoorKeyNumber> [0..1]
<VehicleWeight> VehicleWeight </VehicleWeight> [0..1]
<ExteriorColorCode> ExteriorColorCode </ExteriorColorCode> [0..*]
<InteriorColorCode> InteriorColorCode </InteriorColorCode> [0..*]
<VehicleStatus> VehicleStatus </VehicleStatus> [0..1]
<VehicleShipDate> VehicleShipDate </VehicleShipDate> [0..1]
<VehicleOrderType> VehicleOrderType </VehicleOrderType> [0..1]
<VehicleAllocatedDate> VehicleAllocatedDate </VehicleAllocatedDate> [0..1]
<VehicleLocation> VehicleLocation </VehicleLocation> [0..1]
<VehicleAcquisitionDate> VehicleAcquisitionDate </VehicleAcquisitionDate> [0..1]
<VehiclePricing> VehiclePricing </VehiclePricing> [0..*]
<ModelGroup> ModelGroup </ModelGroup> [0..1]
<IndividualOwner> IndividualOwnerPartyExtended </IndividualOwner> [0..1]
<OrganizationalOwner> OrganizationalOwnerPartyExtended </OrganizationalOwner> [0..1]
<Tax> Tax </Tax> [0..*]
<SoldTo> SoldToParty </SoldTo> [0..1]
<ShipTo> ShipToParty </ShipTo> [0..1]
<VehicleOrderNumber> VehicleOrderNumber </VehicleOrderNumber> [0..1]
</...>
```

### InventoryVehicleExtended

These field(s) use this type: Vehicle.

Name	InventoryVehicleExtended
Abstract	no

#### Data Elements and Components

Field / Component	Description	R/O	Business Rule
Model	Manufacturer-assigned model code of vehicle - Usually available in the VIN number (use NCIC code)	O	
ModelYear	Vehicle designated model year	O	
ModelDescription	Descriptive vehicle model name	O	



## Show Vehicle Inventory

Field / Component	Description	R/O	Business Rule
Make	Vehicle make code - Usually available in the VIN number (use NCIC code).	O	
SaleClass	Class of Sale	O	
Condition	Condition of Vehicle - Example: Excellent, Good, Fair, Poor, Unknown	O	
CertifiedPreownedInd	Identifies as a certified Pre-Owned Vehicle	O	
VehicleNote	Any vehicle related notes	O	
VIN	Federally defined 17 position vehicle identification number	O	
DeliveryMileage	Odometer reading of vehicle at time of delivery	O	
VehicleStock	Dealer assigned vehicle stock number	O	
TrimCode	Manufacturer assigned trim code	O	
DoorsQuantity	Number of doors on vehicle	O	
BodyStyle	Manufacturer-assigned vehicle body style	O	
InteriorColor	Vehicle Interior Color(s)	O	
ExteriorColor	Vehicle Exterior Color(s)	O	
TransmissionType	Vehicle Transmission type	O	
OdometerStatus	Status of odometer at trade-in. Example:: Replaced, Tampered, Miles> 90,000, etc.	O	
NonUSVehicleInd	Indicates whether the vehicle was produced for the United States or not	O	
VehicleDemoInd	Indicates whether vehicle was ever a demo	O	
LicenseNumber	State License plate number of vehicle	O	
BrandedInfo	Vehicle Branding Information	O	
RestrictionInd	Indication that vehicle has restrictions on its use	O	
RestrictionDescription	Description of vehicle use restrictions	O	

## Show Vehicle Inventory

Field / Component	Description	R/O	Business Rule
TelematicsServiceInd	Indication whether Telematics Service Subscription is turned on	O	
Option	Vehicle Options	O	
TransmissionCode	Transmission Serial Number	O	
DeliveryDate	The date of original retail vehicle sale	O	
EngineNumber	Serial number of the engine if vehicle not made for US sale	O	
IgnitionKeyNumber	Vehicle Ignition Key Number	O	
AxleCode	The code on the axle of the vehicle.	O	
FleetAccount	Manufacturer defined fleet account number	O	
FleetVehicleId	Uniquely identifies the vehicle as part of a fleet company	O	
FleetPurchaseOrderNumber	Fleet Purchase Order Number vehicle was purchased under	O	
DoorKeyNumber	Door key number	O	
VehicleWeight	Vehicle weight	O	
ExteriorColorCode	Vehicle exterior color code	O	
InteriorColorCode	Vehicle Interior color code	O	
VehicleStatus	Vehicle status code - Example status could be Built, Scheduled, Shipped, O In-Transit, Sold, etc.		
VehicleShipDate	Date shipped from warehouse or distribution center	O	In YYYY-MM-DD format.
VehicleOrderType	Identifies vehicle Invoice order type	O	
VehicleAllocatedDate	Date vehicle was allocated and/or a delivery work order was cut	O	In YYYY-MM-DD format.
VehicleLocation	Indicates the physical location of the vehicle	O	
VehicleAcquisitionDate	Actual date vehicle was acquired by Dealership	O	In YYYY-MM-DD format.

## Show Vehicle Inventory

Field / Component	Description	R/O	Business Rule
VehiclePricing	Vehicle Pricing	O	Value: MSRP, HoldBack, Destination / Handling, Group Fund Price, Wholesale Price, Actual Cash Value, Total Option Price, Total Option Cost
ModelGroup	Grouping of similar models for order management purposes	O	
IndividualOwner	Individual who owns the vehicle	O	
OrganizationalOwner	Organization that owns the vehicle	O	
Tax	Vehicle Tax	O	Value: Amount
SoldTo	Business party who purchased the vehicle(s)	O	
ShipTo	Business party who the vehicle(s) was shipped to	O	
VehicleOrderNumber	Vehicle Order Number (VON)	O	
ActivityStatus	Activity status of vehicle while being manufactured or in transit	O	
CheckCode	Checksum value for Model number and Serial number combination	O	
RegulatoryRequirements	Describes the regulatory requirements associated with the vehicle, such as customs or local government requirements	O	

### XML Instance Representation

```

<...>
  <Model> Model </Model> [0..1]
  <ModelYear> ModelYear </ModelYear> [0..1]
  <ModelDescription> ModelDescription </ModelDescription> [0..1]
  <Make> Make </Make> [0..1]
  <SaleClass> SaleClass </SaleClass> [0..1]
  <Condition> Condition </Condition> [0..1]
  <CertifiedPreownedInd> CertifiedPreownedInd </CertifiedPreownedInd> [0..1]
  <VehicleNote> VehicleNote </VehicleNote> [0..*]
  <VIN> VIN </VIN> [0..1]
  <DeliveryMileage> DeliveryMileage </DeliveryMileage> [0..1]

```

## Show Vehicle Inventory

---

```
<VehicleStock> VehicleStock </VehicleStock> [0..1]
<TrimCode> TrimCode </TrimCode> [0..1]
<DoorsQuantity> DoorsQuantity </DoorsQuantity> [0..1]
<BodyStyle> BodyStyle </BodyStyle> [0..1]
<InteriorColor> InteriorColor </InteriorColor> [0..*]
<ExteriorColor> ExteriorColor </ExteriorColor> [0..*]
<TransmissionType> TransmissionType </TransmissionType> [0..1]
<OdometerStatus> OdometerStatus </OdometerStatus> [0..1]
<NonUSVehicleInd> NonUSVehicleInd </NonUSVehicleInd> [0..1]
<VehicleDemoInd> VehicleDemoInd </VehicleDemoInd> [0..1]
<LicenseNumber> LicenseNumber </LicenseNumber> [0..1]
<BrandedInfo> BrandedInfo </BrandedInfo> [0..1]
<RestrictionInd> RestrictionInd </RestrictionInd> [0..1]
<RestrictionDescription> RestrictionDescription </RestrictionDescription> [0..1]
<TelematicsServiceInd> TelematicsServiceInd </TelematicsServiceInd> [0..1]
<Option> ExpandedOption </Option> [0..*]
<TransmissionCode> TransmissionCode </TransmissionCode> [0..1]
<DeliveryDate> DeliveryDate </DeliveryDate> [0..1]
<EngineNumber> EngineNumber </EngineNumber> [0..1]
<IgnitionKeyNumber> IgnitionKeyNumber </IgnitionKeyNumber> [0..1]
<AxleCode> AxleCode </AxleCode> [0..1]
<FleetAccount> FleetAccount </FleetAccount> [0..1]
<FleetVehicleId> FleetVehicleId </FleetVehicleId> [0..1]
<FleetPurchaseOrderNumber> FleetPurchaseOrderNumber </FleetPurchaseOrderNumber> [0..1]
<DoorKeyNumber> DoorKeyNumber </DoorKeyNumber> [0..1]
<VehicleWeight> VehicleWeight </VehicleWeight> [0..1]
<ExteriorColorCode> ExteriorColorCode </ExteriorColorCode> [0..*]
<InteriorColorCode> InteriorColorCode </InteriorColorCode> [0..*]
<VehicleStatus> VehicleStatus </VehicleStatus> [0..1]
<VehicleShipDate> VehicleShipDate </VehicleShipDate> [0..1]
<VehicleOrderType> VehicleOrderType </VehicleOrderType> [0..1]
<VehicleAllocatedDate> VehicleAllocatedDate </VehicleAllocatedDate> [0..1]
<VehicleLocation> VehicleLocation </VehicleLocation> [0..1]
<VehicleAcquisitionDate> VehicleAcquisitionDate </VehicleAcquisitionDate> [0..1]
<VehiclePricing> VehiclePricing </VehiclePricing> [0..*]
<ModelGroup> ModelGroup </ModelGroup> [0..1]
<IndividualOwner> IndividualOwnerPartyExtended </IndividualOwner> [0..1]
```

## Show Vehicle Inventory

```
<OrganizationalOwner> OrganizationalOwnerPartyExtended </OrganizationalOwner> [0..1]
<Tax> Tax </Tax> [0..*]
<SoldTo> SoldToParty </SoldTo> [0..1]
<ShipTo> ShipToParty </ShipTo> [0..1]
<VehicleOrderNumber> VehicleOrderNumber </VehicleOrderNumber> [0..1]
<ActivityStatus> ActivityStatus </ActivityStatus> [0..1]
<CheckCode> CheckCode </CheckCode> [0..1]
<RegulatoryRequirements> RegulatoryRequirements </RegulatoryRequirements> [0..*]
</...>
```

### Invoice

These field(s) use this type: **Invoice**.

Name	Invoice
Abstract	no

### Data Elements and Components

Field / Component	Description	R/O	Business Rule
InvoiceNumber	Manufacturer-assigned Invoice Number associated with the vehicle	O	
InvoiceTotal	Grand total for Vehicle Inventory	O	
LoadNumber	Shipment carrier-assigned load number	O	
BorderCrossingInd	Border crossing Indicator	O	
ETADate	Vehicle estimated time of arrival at Ship To dealer	O	In YYYY-MM-DD format
CarrierId	Vehicle Shipment Carrier (Name or Code)	O	
Warehouse	Warehouse or Distribution Center vehicle shipped from	O	
OrderDate	Date vehicle order originally placed with manufacturer	O	In YYYY-MM-DD format.
Vehicle	Vehicle(s) covered by Inventory	O	

## Show Vehicle Inventory

Field / Component	Description	R/O	Business Rule
Tax	Invoice taxes	O	Values: Amount, Weight
DealerAssignedNumber	The number given to an order by a dealer	O	
StatusDate	The date the current status was recorded	O	
TargetBuildDate	The date the OEM expects to build the vehicle	O	
RejectCode	A code representing the reject status of an order	O	
OptionRestrictionStatements	Information about option restrictions on the vehicle. Ex: Sun Roof on Hold	O	
HoldCodeInd	Representing the hold status of an order	O	
RejectResponsibilityCode	A code indicating who has action to take to address a reject	O	

### XML Instance Representation

```

<...>
  <InvoiceNumber> InvoiceNumber </InvoiceNumber> [0..1]
  <InvoiceTotal> InvoiceTotal </InvoiceTotal> [0..1]
  <LoadNumber> LoadNumber </LoadNumber> [0..1]
  <BorderCrossingInd> BorderCrossingInd </BorderCrossingInd> [0..1]
  <ETADate> ETADate </ETADate> [0..1]
  <CarrierId> CarrierId </CarrierId> [0..1]
  <Warehouse> Warehouse </Warehouse> [0..1]
  <OrderDate> OrderDate </OrderDate> [0..1]
  <Vehicle> InventoryVehicleExtended </Vehicle> [0..*]
  <Tax> Tax </Tax> [0..*]
  <DealerAssignedNumber> DealerAssignedNumber </DealerAssignedNumber> [0..1]
  <StatusDate> StatusDate </StatusDate> [0..1]
  <TargetBuildDate> TargetBuildDate </TargetBuildDate> [0..1]
  <RejectCode> RejectCode </RejectCode> [0..1]
  <OptionRestrictionStatements> OptionRestrictionStatements </OptionRestrictionStatements> [0..1]
  <HoldCodeInd> HoldCodeInd </HoldCodeInd> [0..1]
  <RejectResponsibilityCode> RejectResponsibilityCode </RejectResponsibilityCode> [0..1]
</...>

```

## Show Vehicle Inventory

---

### InvoiceTotal

These field(s) use this type: **InvoiceTotal**.

Invoice Total

<b>Name</b>	InvoiceTotal
<b>Abstract</b>	no

### XML Instance Representation

```
<...  
  currency="Currency [1]">  
    Amount  
</...>
```

### ItemId

These field(s) use this type: **ItemId**.

Item part number

<b>Name</b>	ItemId
<b>Abstract</b>	no

### XML Instance Representation

```
<...>  
  Id  
</...>
```

### LocationId

These field(s) use this type: **LocationId,LocationId,LocationId**.

Code identifying a physical location

<b>Name</b>	LocationId
-------------	------------

## Show Vehicle Inventory

<b>Abstract</b>	no
-----------------	----

### XML Instance Representation

```
<...>  
  Id  
</...>
```

## ManufacturerParty

These field(s) use this type: Manufacturer.

<b>Name</b>	ManufacturerParty
-------------	-------------------

<b>Abstract</b>	no
-----------------	----

### Data Elements and Components

Field / Component	Description	R/O	Business Rule
PartyId	Party Identification Number	O	
Name	Name of manufacturer or distributor	O	
Address	Organizational Party address	O	

### XML Instance Representation

```
<...>  
  <PartyId> PartyId </PartyId> [0..1]  
  <Name> Name </Name> [0..1]  
  <Address> OrganizationAddress </Address> [0..1]  
</...>
```

## Measurement

Decimal measurement

<b>Name</b>	Measurement
-------------	-------------



## Show Vehicle Inventory

<b>Abstract</b>	no
-----------------	----

### XML Instance Representation

```
<...>
  xsd:decimal
</...>
```

## Mileage

Mileage definition

<b>Name</b>	Mileage
-------------	---------

<b>Abstract</b>	no
-----------------	----

### Attributes

Field / Component	Description	R/O	Business Rule
uom		O	

### XML Instance Representation

```
<...
uom="MileageMeasure [0..1]">
  Count
</...>
```

## MinimalDemographics

These field(s) use this type: Demographics.

<b>Name</b>	MinimalDemographics
-------------	---------------------

<b>Abstract</b>	no
-----------------	----

### Data Elements and Components

## Show Vehicle Inventory

Field / Component	Description	R/O	Business Rule
Gender	Gender of party	O	
Language	Business party native language	O	
BirthDate	Birth date of party	O	

### XML Instance Representation

```
<...>
  <Gender> Gender </Gender> [0..1]
  <Language> Language </Language> [0..1]
  <BirthDate> BirthDate </BirthDate> [0..1]
</...>
```

## ModelGroup

These field(s) use this type: **ModelGroup**.

Grouping of similar models for order management purposes

<b>Name</b>	<b>ModelGroup</b>
<b>Abstract</b>	<b>no</b>

### XML Instance Representation

```
<...
language="Language [0..1]">
  Description
</...>
```

## NonTaxableAmount

These field(s) use this type: **NonTaxableAmount**.

Total non-taxable price.

<b>Name</b>	<b>NonTaxableAmount</b>
-------------	-------------------------

## Show Vehicle Inventory

**Abstract** no

### XML Instance Representation

```
<...  
  currency="Currency [1]">  
    Amount  
</...>
```

## Option

**Name** Option

**Abstract** no

### Data Elements and Components

Field / Component	Description	R/O	Business Rule
OptionType	An option type for a vehicle or other component. Usually references an OEM supplied list of codes.	O	
OptionName	Name of vehicle option	O	
OptionStockNumber	Stock Number of Vehicle Option	O	
Manufacturer	Manufacturer of Vehicle Option	O	
OptionPrice	Price of Vehicle Option	O	

### XML Instance Representation

```
<...>  
  <OptionType> OptionType </OptionType> [0..1]  
  <OptionName> OptionName </OptionName> [0..1]  
  <OptionStockNumber> OptionStockNumber </OptionStockNumber> [0..1]  
  <Manufacturer> Manufacturer </Manufacturer> [0..1]  
  <OptionPrice> OptionPrice </OptionPrice> [0..1]  
</...>
```

## Show Vehicle Inventory

### OptionBase

<b>Name</b>	OptionBase
<b>Abstract</b>	no

#### Data Elements and Components

Field / Component	Description	R/O	Business Rule
OptionType	An option type for a vehicle or other component. Usually references an OEM supplied list of codes.	O	
OptionName	Name of vehicle option	O	
OptionStockNumber	Stock Number of Vehicle Option	O	
Manufacturer	Manufacturer of Vehicle Option	O	

#### XML Instance Representation

```
<...>
  <OptionType> OptionType </OptionType> [0..1]
  <OptionName> OptionName </OptionName> [0..1]
  <OptionStockNumber> OptionStockNumber </OptionStockNumber> [0..1]
  <Manufacturer> Manufacturer </Manufacturer> [0..1]
</...>
```

### OptionCost

These field(s) use this type: OptionCost.

Actual Dealer cost of option

<b>Name</b>	OptionCost
<b>Abstract</b>	no

#### XML Instance Representation

## Show Vehicle Inventory

---

```
<...  
currency="Currency [1]">  
  Amount  
</...>
```

### OptionMSRP

These field(s) use this type: **OptionMSRP**.

Option MSRP

<b>Name</b>	OptionMSRP
<b>Abstract</b>	no

### XML Instance Representation

```
<...  
currency="Currency [1]">  
  Amount  
</...>
```

### OptionPackageId

These field(s) use this type: **OptionPackageId**.

Option package number or identifier used as a method for grouping option package items from manufacturer(s) Ex: OptPkg1,cost,

<b>Name</b>	OptionPackageId
<b>Abstract</b>	no

### XML Instance Representation

```
<...>  
  Id  
</...>
```

### OptionPrice

## Show Vehicle Inventory

---

These field(s) use this type: **OptionPrice.**

Price of Vehicle Option

<b>Name</b>	OptionPrice
<b>Abstract</b>	no

### XML Instance Representation

```
<...  
currency="Currency [1]">  
  Amount  
</...>
```

## OptionRestrictionStatements

These field(s) use this type: **OptionRestrictionStatements.**

Information about option restrictions on the vehicle

<b>Name</b>	OptionRestrictionStatements
<b>Abstract</b>	no

### XML Instance Representation

```
<...  
language="Language [0..1]">  
  Description  
</...>
```

## OptionType

These field(s) use this type: **OptionType.**

Option Type from an OEM or other sources list of codes.

<b>Name</b>	OptionType
<b>Abstract</b>	no

## Show Vehicle Inventory

### XML Instance Representation

```
<...  
listID="xsd:token [0..1]"  
listName="xsd:string [0..1]"  
listAgencyID="xsd:token [0..1]"  
listAgencyName="xsd:string [0..1]"  
listVersionID="xsd:token [0..1]"  
listURI="xsd:anyURI [0..1]">  
  CodeType  
</...>
```

### OrganizationAddress

These field(s) use this type: Address,Address.

Name	OrganizationAddress
Abstract	no

### Data Elements and Components

Field / Component	Description	R/O	Business Rule
AddressLine	Indicates the multiple lines of an address. The first line is typically the street name and number.	R	
City	Is the City of the Address.	R	
County	County in which the Address is in.	O	
StateOrProvince	Is the State or Province of a given Address.	R	
Country	Country in which the Address is in.	R	
PostalCode	Postal Code of the Address.	R	
UrbanizationCode	Geographic definition of a metropolitan or suburban area	O	

### XML Instance Representation

## Show Vehicle Inventory

```
<...>
  <AddressLine> AddressLine </AddressLine> [1..*]
  <City> City </City> [1]
  <County> County </County> [0..1]
  <StateOrProvince> StateOrProvince </StateOrProvince> [1]
  <Country> Country </Country> [1]
  <PostalCode> PostalCode </PostalCode> [1]
  <UrbanizationCode> UrbanizationCode </UrbanizationCode> [0..1]
</...>
```

### OrganizationalOwnerParty

<b>Name</b>	<b>OrganizationalOwnerParty</b>
<b>Abstract</b>	<b>no</b>

#### Data Elements and Components

Field / Component	Description	R/O	Business Rule
PartyId	Party Identification Number	O	
AlternatePartyIds	Alternate organizational party Identification	O	
Name	Company name of organizational party	O	
Address	Organizational Party address	O	
DBAName	Doing Business As name.	O	
Contact	Organizational Party contact information	O	
RelationshipCode	Indicates the Business Party's relationship to the primary Party (e.g., mother, father, husband, etc.)	O	

### XML Instance Representation

```
<...>
  <PartyId> PartyId </PartyId> [0..1]
  <AlternatePartyIds> OrganizationalPartyAlternatePartyId </AlternatePartyIds> [0..*]
```



## Show Vehicle Inventory

```
<Name> CompanyName </Name> [0..1]
<Address> OrganizationAddress </Address> [0..1]
<DBAName> DBAName </DBAName> [0..1]
<Contact> OrganizationContactExtended </Contact> [0..1]
<RelationshipCode> RelationshipCode </RelationshipCode> [0..1]
</...>
```

### OrganizationalOwnerPartyExtended

These field(s) use this type: **OrganizationalOwner**.

<b>Name</b>	OrganizationalOwnerPartyExtended
<b>Abstract</b>	no

### Data Elements and Components

Field / Component	Description	R/O	Business Rule
PartyId	Party Identification Number	O	
AlternatePartyIds	Alternate organizational party Identification	O	
Name	Company name of organizational party	O	
Address	Organizational Party address	O	
DBAName	Doing Business As name.	O	
Contact	Organizational Party contact information	O	
RelationshipCode	Indicates the Business Party's relationship to the primary Party (e.g., mother, father, husband, etc.)	O	
MarketingMailInd	Indicates customers whom have requested no marketing mail	O	
PrimaryDriverInd	Identifies customer as primary driver	O	
DriverAction	Driver action (Ex: Drop-Off, Pick-Up, etc)	O	

### XML Instance Representation

## Show Vehicle Inventory

```
<...>
  <PartyId> PartyId </PartyId> [0..1]
  <AlternatePartyIds> OrganizationalPartyAlternatePartyId </AlternatePartyIds> [0..*]
  <Name> CompanyName </Name> [0..1]
  <Address> OrganizationAddress </Address> [0..1]
  <DBAName> DBAName </DBAName> [0..1]
  <Contact> OrganizationContactExtended </Contact> [0..1]
  <RelationshipCode> RelationshipCode </RelationshipCode> [0..1]
  <MarketingMailInd> MarketingMailInd </MarketingMailInd> [0..1]
  <PrimaryDriverInd> PrimaryDriverInd </PrimaryDriverInd> [0..1]
  <DriverAction> DriverAction </DriverAction> [0..1]
</...>
```

### OrganizationalPartyAlternatePartyId

These field(s) use this type: **AlternatePartyIds**.

<b>Name</b>	OrganizationalPartyAlternatePartyId
<b>Abstract</b>	no

### Data Elements and Components

Field / Component	Description	R/O	Business Rule
Id	Alternate Party Identification	R	
AssigningPartyId	Agency or entity that validates the Party Id	R	
IssuingState	Indicates that State where the license was issued.	O	
ExpirationDate	Expiration date of the alternate party id (e.g., Driver's License expiration date).	O	

### XML Instance Representation

```
<...>
  <Id> Id </Id> [1]
  <AssigningPartyId> AssigningOrganizationPartyId </AssigningPartyId> [1]
</...>
```

## Show Vehicle Inventory

```
<IssuingState> IssuingState </IssuingState> [0..1]
<ExpirationDate> ExpirationDate </ExpirationDate> [0..1]
</...>
```

### OrganizationContact

<b>Name</b>	OrganizationContact
<b>Abstract</b>	no

#### Data Elements and Components

Field / Component	Description	R/O	Business Rule
PersonName	Contact name	O	
Telephone	Contact telephone numbers	O	
EMailAddress	Contact Email address	O	
Fax	Contact Fax number	O	
PreferredContactMethod	Preferred contact method	O	
ContactTime	Preferred contact time (i.e. Best day/time to reach the contact.	O	

### XML Instance Representation

```
<...>
  <PersonName> OrganizationContactPersonName </PersonName> [0..1]
  <Telephone> OrganizationPartyTelephone </Telephone> [0..*]
  <EMailAddress> OrganizationPartyEmail </EMailAddress> [0..*]
  <Fax> OrganizationPartyFax </Fax> [0..*]
  <PreferredContactMethod> PreferredContactMethodOrganization </PreferredContactMethod> [0..1]
  <ContactTime> ContactTime </ContactTime> [0..1]
</...>
```

### OrganizationContactExtended

These field(s) use this type: Contact.

## Show Vehicle Inventory

<b>Name</b>	<b>OrganizationContactExtended</b>
<b>Abstract</b>	no

### Data Elements and Components

Field / Component	Description	R/O	Business Rule
PersonName	Contact name	O	
Telephone	Contact telephone numbers	O	
EEmailAddress	Contact Email address	O	
Fax	Contact Fax number	O	
PreferredContactMethod	Preferred contact method	O	
ContactTime	Preferred contact time (i.e. Best day/time to reach the contact.	O	
PreferredLanguage	Organization's preferred language	O	

### XML Instance Representation

```
<...>
  <PersonName> OrganizationContactPersonName </PersonName> [0..1]
  <Telephone> OrganizationPartyTelephone </Telephone> [0..*]
  <EEmailAddress> OrganizationPartyEmail </EEmailAddress> [0..*]
  <Fax> OrganizationPartyFax </Fax> [0..*]
  <PreferredContactMethod> PreferredContactMethodOrganization </PreferredContactMethod> [0..1]
  <ContactTime> ContactTime </ContactTime> [0..1]
  <PreferredLanguage> PreferredLanguage </PreferredLanguage> [0..1]
</...>
```

### OrganizationContactPersonName

These field(s) use this type: **PersonName**.

Derived from oa:PersonName

<b>Name</b>	<b>OrganizationContactPersonName</b>
-------------	--------------------------------------

## Show Vehicle Inventory

**Abstract** no

### Data Elements and Components

Field / Component	Description	R/O	Business Rule
GivenName	First Name of business party	R	
FamilyName	Last Name of business party	R	
FormattedName	Full Name of business party. Format for name should be "First Last" with no commas between first and last name	O	

### XML Instance Representation

```
<...>  
  <GivenName> Name </GivenName> [1]  
  <FamilyName> Name </FamilyName> [1]  
  <FormattedName> Name </FormattedName> [0..1]  
</...>
```

## OrganizationPartyBase

**Name** OrganizationPartyBase

**Abstract** no

### Data Elements and Components

Field / Component	Description	R/O	Business Rule
PartyId	Party Identification Number	O	
AlternatePartyIds	Alternate organizational party Identification	O	
Name	Company name of organizational party	O	
Address	Organizational Party address	O	
DBAName	Doing Business As name.	O	

## Show Vehicle Inventory

### XML Instance Representation

```
<...>
  <PartyId> PartyId </PartyId> [0..1]
  <AlternatePartyIds> OrganizationalPartyAlternatePartyId </AlternatePartyIds> [0..*]
  <Name> CompanyName </Name> [0..1]
  <Address> OrganizationAddress </Address> [0..1]
  <DBAName> DBAName </DBAName> [0..1]
</...>
```

### OrganizationPartyEmail

These field(s) use this type: EEmailAddress.

Organization email

<b>Name</b>	OrganizationPartyEmail
<b>Abstract</b>	no

### XML Instance Representation

```
<...>
  xsd:string
</...>
```

### OrganizationPartyFax

These field(s) use this type: Fax.

OrganizationFax number

<b>Name</b>	OrganizationPartyFax
<b>Abstract</b>	no

### XML Instance Representation

```
<...>
  xsd:string
```

## Show Vehicle Inventory

---

```
</...>
```

### OrganizationPartyTelephone

These field(s) use this type: **Telephone**.

OrganizationParty telephone number

<b>Name</b>	OrganizationPartyTelephone
<b>Abstract</b>	no

#### Attributes

Field / Component	Description	R/O	Business Rule
desc		R	
exten		R	

### XML Instance Representation

```
<...  
desc="ContactTelephoneNumberOrganizationDescription [0..1]"  
exten="Note [0..1]">  
  xsd:string  
</...>
```

### PartyBase

Derived from oa:Party

<b>Name</b>	PartyBase
<b>Abstract</b>	no

#### Data Elements and Components

## Show Vehicle Inventory

---

Field / Component	Description	R/O	Business Rule
PartyId	Party Identification Number	O	

### XML Instance Representation

```
<...>  
  <PartyId> PartyId </PartyId> [0..1]  
</...>
```

### PartyId

These field(s) use this type: DealerNumber,PartyId,DealerNumber,PartyId,PartyId.

Party Identification Number

<b>Name</b>	PartyId
<b>Abstract</b>	no

### XML Instance Representation

```
<...>  
  Id  
</...>
```

### Percent

Percent

<b>Name</b>	Percent
<b>Abstract</b>	no

### XML Instance Representation

```
<...>  
  xsd:decimal  
</...>
```



## Show Vehicle Inventory

### RegulatoryId

These field(s) use this type: **RegulatoryId**.

Identification number assigned to regulatory requirement (Ex: Pedimento number assigned to vehicle in Mexico)

<b>Name</b>	RegulatoryId
<b>Abstract</b>	no

### XML Instance Representation

```
<...>  
  Id  
</...>
```

### RegulatoryRequirements

These field(s) use this type: **RegulatoryRequirements**.

<b>Name</b>	RegulatoryRequirements
<b>Abstract</b>	no

### Data Elements and Components

Field / Component	Description	R/O	Business Rule
RegulatoryType	Type of regulatory requirement (Ex: customs)	O	
RegulatoryId	Identification number assigned to regulatory requirement (Ex: Pedimento O number assigned to vehicle in Mexico)		
RegulatoryDate	Date regulatory requirement identification number is assigned (Ex: Date O Pedimento number is assigned to vehicle)	O	In YYYY-MM-DD format.

### XML Instance Representation

```
<...>  
  <RegulatoryType> RegulatoryType </RegulatoryType> [0..1]  
  <RegulatoryId> RegulatoryId </RegulatoryId> [0..1]
```

## Show Vehicle Inventory

```
<RegulatoryDate> RegulatoryDate </RegulatoryDate> [0..1]
</...>
```

### ResponseVerb

<b>Name</b>	ResponseVerb
<b>Abstract</b>	no

### Data Elements and Components

Field / Component	Description	R/O	Business Rule
Verb		R	
OriginalBODId		O	

### XML Instance Representation

```
<...
confirm="ConfirmType [0..1]">
  <OriginalBODId> xsd:NMTOKEN </OriginalBODId> [0..1]
</...>
```

### RestrictionDescription

These field(s) use this type: **RestrictionDescription**.

Description of vehicle use restrictions

<b>Name</b>	RestrictionDescription
<b>Abstract</b>	no

### XML Instance Representation

```
<...
language="Language [0..1]">
  Description
</...>
```

## Show Vehicle Inventory

---

```
</...>
```

### SecondaryDealerNumber

These field(s) use this type: SecondaryDealerNumber.

Identifies secondary dealer number if different than primary "Dealer Number"

<b>Name</b>	SecondaryDealerNumber
<b>Abstract</b>	no

### XML Instance Representation

```
<...>  
  Id  
</...>
```

### Sender

These field(s) use this type: Sender.

<b>Name</b>	Sender
<b>Abstract</b>	no

## Data Elements and Components

## Show Vehicle Inventory

Field / Component	Description	R/O	Business Rule
LogicalId	Provides the logical location of the server and applications from which the Business Object Document originated. It can be used to establish a logical to physical mapping, however its use is optional. Each system or combination of systems should maintain an external central reference table containing the logical names or logical addresses of the application systems in the integration configuration. This enables the logical names to be mapped to the physical network addresses of the resources needed on the network. Note: The technical implementation of this Domain Naming Service is not dictated by this specification. This logical to physical mapping may be done at execution time by the application itself or by a middleware transport mechanism, depending on the integration architecture used. This provides for a simple but effective directory access capability while maintaining application independence from the physical location of those resources on the network	O	
Component	Provides a finer level of control than Logical Identifier and represents the business application that issued the Business Object Document. Its use is optional. For STAR's use this is the DCS Software code name		
Task	Describes the business event that initiated the need for the Business Object Document to be created. For STAR, the task is defined in the Implementation Guidelines for each BOD. It is usually a short description of the BOD. Ex: SalesLead, CreditDecision, etc.	R	
ReferenceId	Enables the sending application to indicate the instance identifier of the event or task that caused the BOD to be created. This is used to correlate a response BOD to an originating BOD	O	
AuthorizationId	Identifies the authorization level of the user or application that is sending the Business Object Document Message. This authorization level being recognized by the receiving system indicates what can be done on the receiving system. For STAR, this is the User ID.	O	
CreatorNameCode	DCS Software Creator Code	R	
SenderNameCode	Additional information about the sending platform (i.e., Short MFG or DSP code).	R	Must use a valid code from the ShortMfg/RSP list on <a href="http://www.starstandards.org">http://www.starstandards.org</a>
SenderURI	Physical address of the sender	O	

## Show Vehicle Inventory

Field / Component	Description	R/O	Business Rule
DealerNumber	Dealer Code of source of information	O	Dealer Number is Required if originating from DMS.
StoreNumber	Dealer code store number (DMS assigned)	O	
AreaNumber	Dealer code area number (DMS vendor assigned)	O	
DealerCountry	Source Dealer country location	O	
Language	This code is used to define the language of the data used in this transaction	O	
DeliverPendingMailInd	Indicates if the user requests to receive pending mail that has been stored and has yet not been delivered yet. By selecting 0, the user will only receive the response for the current transaction the user is performing.	O	1 - Receive Pending Mail. 0 - Do not receive pending mail.
Password	Token for application specific authentication. Used to authenticate dealership/users through application specific security	O	
SystemVersion	The sender's software version number.	O	
PartyId	The Party Id field uniquely identifies the Sender of the message. This element can be used for parties within the Automotive Community as well as external parties. Party Id is not intended as a replacement for the Dealer Number. Suggested formats for OEMs or other large institutions include: DUNs Number, ShortMfgCode + DUNs, or ShortMfgCode. The suggested format for Dealers is: ShortMfgCode+Dealer Number.	O	
LocationId	The Location Id field uniquely identifies the location of the Sender of a message. This Id may be aligned with a physical address or data centers. This field provides an additional level of granularity beyond the usage of the Party Id for additional routing and deliver of data.	O	
ServiceId	The Service Id field identifies the particular service from which a message is being sent, e.g., an inventory service.	O	

### XML Instance Representation

```
<...>
  <LogicalId> Text </LogicalId> [0..1]
```

## Show Vehicle Inventory

```
<Component> Text </Component> [1]
<Task> Text </Task> [1]
<ReferenceId> Reference </ReferenceId> [0..1]
<AuthorizationId> Id </AuthorizationId> [0..1]
<CreatorNameCode> Text </CreatorNameCode> [1]
<SenderNameCode> ShortMfg </SenderNameCode> [1]
<SenderURI> URI </SenderURI> [0..1]
<DealerNumber> PartyId </DealerNumber> [0..1]
<StoreNumber> Text </StoreNumber> [0..1]
<AreaNumber> Text </AreaNumber> [0..1]
<DealerCountry> Country </DealerCountry> [0..1]
<Language> Language </Language> [0..1]
<DeliverPendingMailInd> Indicator </DeliverPendingMailInd> [0..1]
<Password> Text </Password> [0..1]
<SystemVersion> SystemVersion </SystemVersion> [0..1]
<PartyId> PartyId </PartyId> [0..1]
<LocationId> LocationId </LocationId> [0..1]
<ServiceId> ServiceId </ServiceId> [0..1]
</...>
```

### SenderBase

Name	SenderBase
Abstract	no

### Data Elements and Components

## Show Vehicle Inventory

Field / Component	Description	R/O	Business Rule
LogicalId	Provides the logical location of the server and applications from which the Business Object Document originated. It can be used to establish a logical to physical mapping, however its use is optional. Each system or combination of systems should maintain an external central reference table containing the logical names or logical addresses of the application systems in the integration configuration. This enables the logical names to be mapped to the physical network addresses of the resources needed on the network. Note: The technical implementation of this Domain Naming Service is not dictated by this specification. This logical to physical mapping may be done at execution time by the application itself or by a middleware transport mechanism, depending on the integration architecture used. This provides for a simple but effective directory access capability while maintaining application independence from the physical location of those resources on the network	O	
Component	Provides a finer level of control than Logical Identifier and represents the business application that issued the Business Object Document. Its use is optional. For STAR's use this is the DCS Software code name		
Task	Describes the business event that initiated the need for the Business Object Document to be created. For STAR, the task is defined in the Implementation Guidelines for each BOD. It is usually a short description of the BOD. Ex: SalesLead, CreditDecision, etc.	R	
ReferenceId	Enables the sending application to indicate the instance identifier of the event or task that caused the BOD to be created. This is used to correlate a response BOD to an originating BOD	O	
AuthorizationId	Identifies the authorization level of the user or application that is sending the Business Object Document Message. This authorization level being recognized by the receiving system indicates what can be done on the receiving system. For STAR, this is the User ID.	O	

### XML Instance Representation

```
<...>
  <LogicalId> Text </LogicalId> [0..1]
  <Component> Text </Component> [1]
  <Task> Text </Task> [1]
```

## Show Vehicle Inventory

```
<ReferenceId> Reference </ReferenceId> [0..1]
<AuthorizationId> Id </AuthorizationId> [0..1]
</...>
```

### ServiceId

These field(s) use this type: **ServiceId,ServiceId.**

The Service Id field identifies the particular service to or from which a message is being sent, e.g., an inventory service.

<b>Name</b>	<b>ServiceId</b>
<b>Abstract</b>	<b>no</b>

### XML Instance Representation

```
<...>
  Id
</...>
```

### ShipToParty

These field(s) use this type: **ShipTo,ShipTo.**

<b>Name</b>	<b>ShipToParty</b>
<b>Abstract</b>	<b>no</b>

### Data Elements and Components

Field / Component	Description	R/O	Business Rule
PartyId	Party Identification Number	O	
AlternatePartyIds	Alternate organizational party Identification	O	
Name	Company name of organizational party	O	
Address	Organizational Party address	O	
DBAName	Doing Business As name.	O	



## Show Vehicle Inventory

Field / Component	Description	R/O	Business Rule
LocationId	Code identifying the physical location of a dealer.	O	

### XML Instance Representation

```
<...>
  <PartyId> PartyId </PartyId> [0..1]
  <AlternatePartyIds> OrganizationalPartyAlternatePartyId </AlternatePartyIds> [0..*]
  <Name> CompanyName </Name> [0..1]
  <Address> OrganizationAddress </Address> [0..1]
  <DBAName> DBAName </DBAName> [0..1]
  <LocationId> LocationId </LocationId> [0..1]
</...>
```

### Show

These field(s) use this type: **Show**.

<b>Name</b>	<b>Show</b>
<b>Abstract</b>	<b>no</b>

### Data Elements and Components

Field / Component	Description	R/O	Business Rule
Verb		R	
OriginalBODId		O	

### XML Instance Representation

```
<...
confirm="ConfirmType [0..1]">
  <OriginalBODId> xsd:NMTOKEN </OriginalBODId> [0..1]
</...>
```

## ShowVehicleInventory

## Show Vehicle Inventory

These field(s) use this type: **ShowVehicleInventory**.

<b>Name</b>	ShowVehicleInventory
<b>Abstract</b>	no

### Data Elements and Components

Field / Component	Description	R/O	Business Rule
ApplicationArea	Provides the information that an application may need to know in order to communicate in an integration of two or more business applications. The ApplicationArea is used at the applications layer of communication. While the integration frameworks web services and middleware provide the communication layer that OAGIS operates on top of. Provides the information that an application may need to know in order to communicate in an integration of two or more business applications. The ApplicationArea is used at the applications layer of communication. While the integration frameworks web services and middleware provide the communication layer that OAGIS operates on top of.	R	
DataArea		R	

### XML Instance Representation

```
<...  
revision="Text [0..1]"  
release="8.1-Lite [0..1]"  
environment="Text [0..1]"  
lang="Language [0..1]"  
bodVersion="Text [0..1]">  
  <ApplicationArea> ... </ApplicationArea> [1]  
  <DataArea> ShowVehicleInventoryDataArea </DataArea> [1]  
</...>
```

## ShowVehicleInventoryDataArea

These field(s) use this type: **DataArea**.

## Show Vehicle Inventory

Name	ShowVehicleInventoryDataArea
Abstract	no

### Data Elements and Components

Field / Component	Description	R/O	Business Rule
Show	The Show verb is used when sending the information about a specific instance of a business document or entity. The Show verb may be used to respond to a Get request or it can be used in a publish scenario, where it pushes information to other applications based on a business event. Although BODs based on this verb do not commonly cause updates to occur, there may be times when the component receiving the Show decides to use the information it receives to update. This is entirely the decision of the receiving software component and is not forbidden. The behavior of the Show verb is quite straight forward with one exception. The Show response to any Get request needs to read the request carefully to ensure the response is returning the requested Data Types.	R	
VehicleInventory		R	

### XML Instance Representation

```
<...>
  <Show> ... </Show> [1]
  <VehicleInventory> ... </VehicleInventory> [1..*]
</...>
```

### Signature

These field(s) use this type: Signature.

Name	Signature
Abstract	no

### Attributes

## Show Vehicle Inventory

Field / Component	Description	R/O	Business Rule
qualifyingAgency		O	

### Data Elements and Components

Field / Component	Description	R/O	Business Rule
-------------------	-------------	-----	---------------

### XML Instance Representation

```
<...  
qualifyingAgency="Text [0..1]">  
Allow any elements from any namespace (strict validation). [0..1]  
</...>
```

## SoldToParty

These field(s) use this type: **SoldTo,SoldTo.**

<b>Name</b>	<b>SoldToParty</b>
<b>Abstract</b>	<b>no</b>

### Data Elements and Components

Field / Component	Description	R/O	Business Rule
PartyId	Party Identification Number	O	
AlternatePartyIds	Alternate organizational party Identification	O	
Name	Company name of organizational party	O	
Address	Organizational Party address	O	
DBAName	Doing Business As name.	O	

### XML Instance Representation

```
<...>
```

## Show Vehicle Inventory

```
<PartyId> PartyId </PartyId> [0..1]
<AlternatePartyIds> OrganizationalPartyAlternatePartyId </AlternatePartyIds> [0..*]
<Name> CompanyName </Name> [0..1]
<Address> OrganizationAddress </Address> [0..1]
<DBAName> DBAName </DBAName> [0..1]
</...>
```

### Tax

These field(s) use this type: **Tax, Tax.**

Name	Tax
Abstract	no

### Data Elements and Components

Field / Component	Description	R/O	Business Rule
TaxType	Identifies the type tax.	R	
TaxDescription	Free form text description of tax amount.	O	
TaxAmount	Actual amount of tax paid.	O	
UnitSalesTaxAmount	Unit amount of sales tax.	O	
TaxRate	Tax Percentage Rate	O	
TotalTaxableAmount	Total taxable price	O	
NonTaxableAmount	Total non-taxable price	O	
TaxTypeId	Tax type identification	O	
TaxabilityInd	Determines whether the dealer wants to claim tax on the cost.	O	

### XML Instance Representation

```
<...>
  <TaxType> TaxType </TaxType> [1]
  <TaxDescription> TaxDescription </TaxDescription> [0..1]
</...>
```

## Show Vehicle Inventory

```
<TaxAmount> TaxAmount </TaxAmount> [0..1]
<UnitSalesTaxAmount> UnitSalesTaxAmount </UnitSalesTaxAmount> [0..1]
<TaxRate> TaxRate </TaxRate> [0..1]
<TotalTaxableAmount> TotalTaxableAmount </TotalTaxableAmount> [0..1]
<NonTaxableAmount> NonTaxableAmount </NonTaxableAmount> [0..1]
<TaxTypeId> TaxTypeId </TaxTypeId> [0..1]
<TaxabilityInd> TaxabilityInd </TaxabilityInd> [0..1]
</...>
```

### TaxAmount

These field(s) use this type: **TaxAmount**.

Actual amount of tax paid.

Name	TaxAmount
Abstract	no

### XML Instance Representation

```
<...
  currency="Currency [1]">
    Amount
  </...>
```

### TaxDescription

These field(s) use this type: **TaxDescription**.

Free form text description of tax amount.

Name	TaxDescription
Abstract	no

### XML Instance Representation

```
<...
  language="Language [0..1]">
```

## Show Vehicle Inventory

---

```
Description
</...>
```

### TaxRate

These field(s) use this type: TaxRate.

Tax Percentage rate.

<b>Name</b>	TaxRate
<b>Abstract</b>	no

### XML Instance Representation

```
<...>
  Percent
</...>
```

### TotalTaxableAmount

These field(s) use this type: TotalTaxableAmount.

Total taxable price.

<b>Name</b>	TotalTaxableAmount
<b>Abstract</b>	no

### XML Instance Representation

```
<...
currency="Currency [1]">
  Amount
</...>
```

### UnitSalesTaxAmount

These field(s) use this type: UnitSalesTaxAmount.

## Show Vehicle Inventory

---

Unit amount of sales tax.

<b>Name</b>	<b>UnitSalesTaxAmount</b>
<b>Abstract</b>	<b>no</b>

### XML Instance Representation

```
<...  
currency="Currency [1]">  
  Amount  
</...>
```

## Vehicle

<b>Name</b>	<b>Vehicle</b>
<b>Abstract</b>	<b>no</b>

### Data Elements and Components

Field / Component	Description	R/O	Business Rule
Model	Manufacturer-assigned model code of vehicle - Usually available in the VIN number (use NCIC code)	O	
ModelYear	Vehicle designated model year	O	
ModelDescription	Descriptive vehicle model name	O	
Make	Vehicle make code - Usually available in the VIN number (use NCIC code).	O	

### XML Instance Representation

```
<...>  
  <Model> Model </Model> [0..1]  
  <ModelYear> ModelYear </ModelYear> [0..1]  
  <ModelDescription> ModelDescription </ModelDescription> [0..1]  
  <Make> Make </Make> [0..1]
```



## Show Vehicle Inventory

</...>

### VehicleBase

**Name** VehicleBase

**Abstract** no

#### Data Elements and Components

Field / Component	Description	R/O	Business Rule
Model	Manufacturer-assigned model code of vehicle - Usually available in the VIN number (use NCIC code)	O	
ModelYear	Vehicle designated model year	O	
ModelDescription	Descriptive vehicle model name	O	
Make	Vehicle make code - Usually available in the VIN number (use NCIC code).	O	
SaleClass	Class of Sale	O	
Condition	Condition of Vehicle - Example: Excellent, Good, Fair, Poor, Unknown	O	
CertifiedPreownedInd	Identifies as a certified Pre-Owned Vehicle	O	
VehicleNote	Any vehicle related notes	O	
VIN	Federally defined 17 position vehicle identification number	O	
DeliveryMileage	Odometer reading of vehicle at time of delivery	O	
VehicleStock	Dealer assigned vehicle stock number	O	
TrimCode	Manufacturer assigned trim code	O	
DoorsQuantity	Number of doors on vehicle	O	
BodyStyle	Manufacturer-assigned vehicle body style	O	
InteriorColor	Vehicle Interior Color(s)	O	

## Show Vehicle Inventory

Field / Component	Description	R/O	Business Rule
ExteriorColor	Vehicle Exterior Color(s)	O	
TransmissionType	Vehicle Transmission type	O	
OdometerStatus	Status of odometer at trade-in. Example:: Replaced, Tampered, Miles> 90,000, etc.	O	
NonUSVehicleInd	Indicates whether the vehicle was produced for the United States or not	O	
VehicleDemoInd	Indicates whether vehicle was ever a demo	O	
LicenseNumber	State License plate number of vehicle	O	
BrandedInfo	Vehicle Branding Information	O	
RestrictionInd	Indication that vehicle has restrictions on its use	O	
RestrictionDescription	Description of vehicle use restrictions	O	
TelematicsServiceInd	Indication whether Telematics Service Subscription is turned on	O	

### XML Instance Representation

```

<...>
  <Model> Model </Model> [0..1]
  <ModelYear> ModelYear </ModelYear> [0..1]
  <ModelDescription> ModelDescription </ModelDescription> [0..1]
  <Make> Make </Make> [0..1]
  <SaleClass> SaleClass </SaleClass> [0..1]
  <Condition> Condition </Condition> [0..1]
  <CertifiedPreownedInd> CertifiedPreownedInd </CertifiedPreownedInd> [0..1]
  <VehicleNote> VehicleNote </VehicleNote> [0..*]
  <VIN> VIN </VIN> [0..1]
  <DeliveryMileage> DeliveryMileage </DeliveryMileage> [0..1]
  <VehicleStock> VehicleStock </VehicleStock> [0..1]
  <TrimCode> TrimCode </TrimCode> [0..1]
  <DoorsQuantity> DoorsQuantity </DoorsQuantity> [0..1]
  <BodyStyle> BodyStyle </BodyStyle> [0..1]
  <InteriorColor> InteriorColor </InteriorColor> [0..*]

```

## Show Vehicle Inventory

```
<ExteriorColor> ExteriorColor </ExteriorColor> [0..*]  
<TransmissionType> TransmissionType </TransmissionType> [0..1]  
<OdometerStatus> OdometerStatus </OdometerStatus> [0..1]  
<NonUSVehicleInd> NonUSVehicleInd </NonUSVehicleInd> [0..1]  
<VehicleDemoInd> VehicleDemoInd </VehicleDemoInd> [0..1]  
<LicenseNumber> LicenseNumber </LicenseNumber> [0..1]  
<BrandedInfo> BrandedInfo </BrandedInfo> [0..1]  
<RestrictionInd> RestrictionInd </RestrictionInd> [0..1]  
<RestrictionDescription> RestrictionDescription </RestrictionDescription> [0..1]  
<TelematicsServiceInd> TelematicsServiceInd </TelematicsServiceInd> [0..1]  
</...>
```

### VehicleInventory

These field(s) use this type: **VehicleInventory**.

STAR Version 3.0 - Draft

STAR Version 2.1, STAR approved 04/20/2005; effective date 07/04/2005

STAR Version 2.0, STAR approved 05/07/2004; effective date 07/04/2004

STAR Version 1.0 STAR approved 11/22/2002; OAGI approved 3/15/2003; effective date 01/01/2003

<b>Name</b>	<b>VehicleInventory</b>
<b>Abstract</b>	<b>no</b>

### Data Elements and Components

Field / Component	Description	R/O	Business Rule
Header		R	
Invoice		O	

### XML Instance Representation

```
<...>  
<Header> ... </Header> [1]
```

## Show Vehicle Inventory

```
<Invoice> ... </Invoice> [0..*]  
</...>
```

### VehicleInventoryHeader

These field(s) use this type: **Header.**

<b>Name</b>	VehicleInventoryHeader
<b>Abstract</b>	no

### Data Elements and Components

Field / Component	Description	R/O	Business Rule
DocumentDateTime	Is the date and time the document was last created. This is not the date and time that the BOD message instance was created.	O	Date/Time fields must be formatted as XML Schema DateTimes in UTC/GMT format without offsets. Example: 2003-11-05T13:15:30Z
SecondaryPassword	Secondary password used to validate access to the dealer information	O	(INACTIVE)
SecondaryDealerNumber	Identifies secondary dealer number if different than primary "Dealer Number"	O	(INACTIVE)
DocumentId	Manufacturer order reference number for this inventory transaction	O	
InvoiceDate	Date of Vehicle Inventory	O	In YYYY-MM-DD format.
TransactionType	Type of vehicle Inventory transaction	O	
SoldTo	Business party who purchased the vehicle(s)	O	
ShipTo	Business party who the vehicle(s) was shipped to	O	
Manufacturer	Business party who manufactured the vehicle(s)	O	

### XML Instance Representation

```
<...>
```

## Show Vehicle Inventory

```
<DocumentDateTime> DocumentDateTime </DocumentDateTime> [0..1]
<SecondaryPassword> SecondaryPassword </SecondaryPassword> [0..1]
<SecondaryDealerNumber> SecondaryDealerNumber </SecondaryDealerNumber> [0..1]
<DocumentId> DocumentId </DocumentId> [0..1]
<InvoiceDate> InvoiceDate </InvoiceDate> [0..1]
<TransactionType> TransactionType </TransactionType> [0..1]
<SoldTo> SoldToParty </SoldTo> [0..1]
<ShipTo> ShipToParty </ShipTo> [0..1]
<Manufacturer> ManufacturerParty </Manufacturer> [0..1]
</...>
```

### VehiclePrice

These field(s) use this type: VehiclePrice.

Customer price of vehicle

<b>Name</b>	VehiclePrice
<b>Abstract</b>	no

### XML Instance Representation

```
<...
currency="Currency [1]">
  Amount
</...>
```

### VehiclePricing

These field(s) use this type: VehiclePricing.

<b>Name</b>	VehiclePricing
<b>Abstract</b>	no

## Data Elements and Components

## Show Vehicle Inventory

Field / Component	Description	R/O	Business Rule
VehiclePrice	Customer price of vehicle	R	
PriceExplanation	Explanatory Note for Pricing Example: Anniversary Edition	O	
VehiclePricingType	Designates type of pricing for vehicle transaction	O	
PricingTypeSource	Source from which pricing type data originated (i.e. Blue Book, NADA, etc.)	O	

### XML Instance Representation

```
<...>
  <VehiclePrice> VehiclePrice </VehiclePrice> [1]
  <PriceExplanation> PriceExplanation </PriceExplanation> [0..1]
  <VehiclePricingType> VehiclePricingType </VehiclePricingType> [0..1]
  <PricingTypeSource> PricingTypeSource </PricingTypeSource> [0..1]
</...>
```

## VehicleWeight

These field(s) use this type: **VehicleWeight**.

Vehicle Weight

<b>Name</b>	<b>VehicleWeight</b>
<b>Abstract</b>	no

### XML Instance Representation

```
<...>
  Measurement
</...>
```

## Verb

These field(s) use this type: **Verb**.

## Show Vehicle Inventory

<b>Name</b>	<b>Verb</b>
<b>Abstract</b>	<b>no</b>

### Data Elements and Components

Field / Component	Description	R/O	Business Rule
-------------------	-------------	-----	---------------

#### XML Instance Representation

```
<.../>
```

### Warehouse

These field(s) use this type: Warehouse.

Warehouse Number

<b>Name</b>	<b>Warehouse</b>
<b>Abstract</b>	<b>no</b>

#### XML Instance Representation

```
<...>  
  Id  
</...>
```

### ActivityStatus

These field(s) use this type: ActivityStatus.

Activity status

<b>Name</b>	<b>ActivityStatus</b>
-------------	-----------------------

Base XSD Type: string

### AddressLine

## Show Vehicle Inventory

---

These field(s) use this type: **AddressLine**.

Indicates the multiple lines of an address. The first line is typically the street name and number.

Name	AddressLine
------	-------------

\*Base XSD Type: string

### AddressQualifier

Address Qualifier

Name	AddressQualifier
------	------------------

\*Base XSD Type: string

Code Value	Description
WorkAddress	Work Address
SeasonalAddress	Seasonal Address
DeliveryAddress	Delivery Address
HomeAddress	Home Address
PreviousAddress	Previous Address
Other	Other
Garage	Garage
Billing	Billing
NonSigningSpouseAddress	Non Signing Spouse Address
N/A	Not Applicable

### AssigningOrganizationPartyId

These field(s) use this type: **AssigningPartyId**.



## Show Vehicle Inventory

Assigning Organization Party Id

Name	AssigningOrganizationPartyId
*Base XSD Type: string	
Code Value	Description
LegalId	Legal ID
NationalId	Government-assigned ID such as a social security Number
Other	Other
DUNS	Dun and Bradstreet
MotorDealerRegistrationId	Department of Motor Vehicle Registration number for a dealer. This is the dealer's license number to do business.
GSTRegistrationId	Canadian Goods and Services Tax Id.
HSTRegistrationId	Canadian HarmonizedTax Id.
Certification Of Registration Id	Id of the certificate of registration assigned to a business to allow that business to collect and remit certain taxes or fees to a state.
QSTRegistrationId	Quebec sales tax id.

## AssigningPartyId

These field(s) use this type: AssigningPartyId.

Agency or entity that validates the Party Id

Name	AssigningPartyId
*Base XSD Type: string	
Code Value	Description
LegalId	Legal ID
DriversLicense	Drivers License

## Show Vehicle Inventory

Code Value	Description
NationalId	Government-assigned ID such as a social security Number
Other	Other
GSTRegistrationId	Canadian Goods and Services Tax Id.
HSTRegistrationId	Canadian HarmonizedTax Id.
PreviousAccountNumber	
QSTRegistrationId	Quebec sales tax id.

### AxleCode

These field(s) use this type: **AxleCode**.

The code on the axle of the vehicle.

Name	AxleCode
------	----------

\*Base XSD Type: string

### BirthDate

These field(s) use this type: **BirthDate**.

Birth date of party

Name	BirthDate
------	-----------

\*Base XSD Type: date

### BodyStyle

These field(s) use this type: **BodyStyle**.

Manufacturer-assigned vehicle body style

## Show Vehicle Inventory

---

Name	BodyStyle
------	-----------

\*Base XSD Type: string

### BorderCrossingInd

These field(s) use this type: **BorderCrossingInd.**

BorderCrossing Indicator

Name	BorderCrossingInd
------	-------------------

\*Base XSD Type: string

Code Value	Description
------------	-------------

0	
---	--

1	
---	--

### BrandedTitleDate

These field(s) use this type: **BrandedTitleDate.**

Branding Date

Name	BrandedTitleDate
------	------------------

\*Base XSD Type: date

### BrandedTitleInd

These field(s) use this type: **BrandedTitleInd.**

This tag indicates if a vehicle's title has been branded. (i.e., vehicle totaled and state registration title branded as such)

Name	BrandedTitleInd
------	-----------------

\*Base XSD Type: string

## Show Vehicle Inventory

Code Value	Description
0	
1	

### BrandingSource

These field(s) use this type: **BrandingSource**.

Branding source (i.e., source who says that the vehicle is branded)

Name	BrandingSource
------	----------------

\*Base XSD Type: string

### BrandingStateReference

These field(s) use this type: **BrandingStateReference**.

Branding State Reference Number

Name	BrandingStateReference
------	------------------------

\*Base XSD Type: string

### CertifiedPreownedInd

These field(s) use this type: **CertifiedPreownedInd**.

Identifies as a certified Pre-Owned Vehicle

Name	CertifiedPreownedInd
------	----------------------

\*Base XSD Type: string

Code Value	Description
0	

## Show Vehicle Inventory

Code Value	Description
1	

### City

These field(s) use this type: **City.**

City of the Address.

Name	City
------	------

\*Base XSD Type: string

### Code

These field(s) use this type: **BODId.**

Unique code name

Name	Code
------	------

\*Base XSD Type: string

### CompanyName

These field(s) use this type: **Name.**

Company name of customer

Name	CompanyName
------	-------------

\*Base XSD Type: string

### Condition

These field(s) use this type: **Condition.**

## Show Vehicle Inventory

---

Condition of Vehicle - Example: Excellent, Good, Fair, Poor, Unknown

Name	Condition
------	-----------

\*Base XSD Type: string

## ConfirmType

Name	ConfirmType
------	-------------

\*Base XSD Type: NMTOKEN

Code Value	Description
Always	
OnChange	
Never	

## ContactTelephoneNumberDescription

Contact Telephone Number Description

Name	ContactTelephoneNumberDescription
------	-----------------------------------

\*Base XSD Type: string

Code Value	Description
Evening Phone	Evening Phone
Day Phone	Day Phone
Cell Phone	Cell Phone
Pager	Pager
Other	Other

## Show Vehicle Inventory

### ContactTelephoneNumberOrganizationDescription

Contact Telephone Number Organization Description

Name	ContactTelephoneNumberOrganizationDescription
*Base XSD Type: string	
Code Value	Description
Day Phone	Day Phone
Cell Phone	Cell Phone
Pager	Pager
Other	Other

### ContactTime

These field(s) use this type: ContactTime,ContactTime.

Preferred contact time (i.e. Best day/time to reach the contact.

Name	ContactTime
*Base XSD Type: string	

### Country

These field(s) use this type: DealerCountry,DealerCountry,Country.

Country in which the Address is in. Conforms to ISO 3166-2. AF -AFGHANISTAN AL -ALBANIA DZ -ALGERIA AS -AMERICAN SAMOA AD -ANDORRA AO -ANGOLA AI -ANGUILLA AQ -ANTARCTICA AG -ANTIGUA AND BARBUDA AR -ARGENTINA AM -ARMENIA AW -ARUBA AU -AUSTRALIA AT -AUSTRIA AZ -AZERBAIJAN BS -BAHAMAS BH -BAHRAIN BD -BANGLADESH BB -BARBADOS BY -BELARUS BE -BELGIUM BZ -BELIZE BJ -BENIN BM -BERMUDA BT -BHUTAN BO -BOLIVIA BA -BOSNIA AND HERZEGOVINA BW -BOTSWANA BV -BOUVET ISLAND BR -BRAZIL IO-BRITISH INDIAN OCEAN TERRITORY BN -BRUNEI DARUSSALAM BG -BULGARIA BF -BURKINA FASO BI -BURUNDI KH -CAMBODIA CM -CAMEROON CA -CANADA CV -CAPE VERDE KY -CAYMAN ISLANDS CF -CENTRAL AFRICAN REPUBLIC TD -CHAD CL -CHILE CN -CHINA CX -CHRISTMAS ISLAND CC -COCOS (KEELING) ISLANDS CO

## Show Vehicle Inventory

-COLOMBIA KM -COMOROS CG -CONGO CD -CONGO, THE DEMOCRATIC REPUBLIC OF THE CK -COOK ISLANDS CR -COSTA RICA CI -CÔTE D'IVOIRE HR -CROATIA CU -CUBA CY -CYPRUS CZ -CZECH REPUBLIC DK -DENMARK DJ -DJIBOUTI DM -DOMINICA DO -DOMINICAN REPUBLIC EC -ECUADOR EG -EGYPT SV -EL SALVADOR GQ -EQUATORIAL GUINEA ER -ERITREA EE -ESTONIA ET -ETHIOPIA FK -FALKLAND ISLANDS (MALVINAS) FO -FAROE ISLANDS FJ -FIJI FI -FINLAND FR -FRANCE GF -FRENCH GUIANA PF -FRENCH POLYNESIA TF -FRENCH SOUTHERN TERRITORIES GA -GABON GM -GAMBIA GE -GEORGIA DE -GERMANY GH -GHANA GI -GIBRALTAR GR -GREECE GL -GREENLAND GD -GRENADA GP -GUADELOUPE GU -GUAM GT -GUATEMALA GN -GUINEA GW -GUINEA-BISSAU GY -GUYANA HT -HAITI HM -HEARD ISLAND AND MCDONALD ISLANDS VA -HOLY SEE (VATICAN CITY STATE) HN -HONDURAS HK -HONG KONG HU -HUNGARY IS -ICELAND IN -INDIA ID -INDONESIA IR -IRAN, ISLAMIC REPUBLIC OF IQ -IRAQ IE -IRELAND IL -ISRAEL IT -ITALY JM -JAMAICA JP -JAPAN JO -JORDAN KZ -KAZAKHSTAN KE -KENYA KI -KIRIBATI KP -KOREA, DEMOCRATIC PEOPLE'S REPUBLIC OF KR -KOREA, REPUBLIC OF KW -KUWAIT KG -KYRGYZSTAN LA -LAO PEOPLE'S DEMOCRATIC REPUBLIC LV -LATVIA LB -LEBANON LS -LESOTHO LR -LIBERIA LY -LIBYAN ARAB JAMAHIRIYA LI -LIECHTENSTEIN LT -LITHUANIA LU -LUXEMBOURG MO -MACAO MK -MACEDONIA, THE FORMER YUGOSLAV REPUBLIC OF MG -MADAGASCAR MW -MALAWI MY -MALAYSIA MV -MALDIVES ML -MALI MT -MALTA MH -MARSHALL ISLANDS MQ -MARTINIQUE MR -MAURITANIA MU -MAURITIUS YT -MAYOTTE MX -MEXICO FM -MICRONESIA, FEDERATED STATES OF MD -MOLDOVA, REPUBLIC OF MC -MONACO MN -MONGOLIA MS -MONTSERRAT MA -MOROCCO MZ -MOZAMBIQUE MM -MYANMAR NA -NAMIBIA NR -NAURU NP -NEPAL NL -NETHERLANDS AN -NETHERLANDS ANTILLES NC -NEW CALEDONIA NZ -NEW ZEALAND NI -NICARAGUA NE -NIGER NG -NIGERIA NU -NIUE NF -NORFOLK ISLAND MP -NORTHERN MARIANA ISLANDS NO -NORWAY OM -OMAN PK -PAKISTAN PW -PALAU PS -PALESTINIAN TERRITORY, OCCUPIED PA -PANAMA PG -PAPUA NEW GUINEA PY -PARAGUAY PE -PERU PH -PHILIPPINES PN -PITCAIRN PL -POLAND PT -PORTUGAL PR -PUERTO RICO QA -QATAR RE -RÅÅ#Å#UNION RO -ROMANIA RU -RUSSIAN FEDERATION RW -RWANDA SH -SAINT HELENA KN -SAINT KITTS AND NEVIS LC -SAINT LUCIA PM -SAINT PIERRE AND MIQUELON VC -SAINT VINCENT AND THE GRENADINES WS -SAMOA SM -SAN MARINO ST -SAO TOME AND PRINCIPE SA -SAUDI ARABIA SN -SENEGAL CS -SERBIA AND MONTENEGRO SC -SEYCHELLES SL -SIERRA LEONE SG -SINGAPORE SK -SLOVAKIA SI -SLOVENIA SB -SOLOMON ISLANDS SO -SOMALIA ZA -SOUTH AFRICA GS -SOUTH GEORGIA AND THE SOUTH SANDWICH ISLANDS ES -SPAIN LK -SRI LANKA SD -SUDAN SR -SURINAME SJ -SVALBARD AND JAN MAYEN SZ -SWAZILAND SE -SWEDEN CH -SWITZERLAND SY -SYRIAN ARAB REPUBLIC TW -TAIWAN, PROVINCE OF CHINA TJ -TAJIKISTAN TZ -TANZANIA, UNITED REPUBLIC OF TH -THAILAND TL -TIMOR-LESTE TG - TOGO TK -TOKELAU TO -TONGA TT -TRINIDAD AND TOBAGO TN -TUNISIA TR -TURKEY TM -TURKMENISTAN TC -TURKS AND CAICOS ISLANDS TV -TUVALU UG -UGANDA UA -UKRAINE AE -UNITED ARAB EMIRATES GB -UNITED KINGDOM US -UNITED STATES UM -UNITED STATES MINOR OUTLYING ISLANDS UY -URUGUAY UZ -UZBEKISTAN VU -VANUATU VE -VENEZUELA VN -VIET NAM VG -VIRGIN ISLANDS, BRITISH VI -VIRGIN ISLANDS, U.S. WF -WALLIS AND FUTUNA EH -WESTERN SAHARA YE -YEMEN ZM -ZAMBIA ZW -ZIMBABWE

Name	Country
*Base XSD Type: string	
Code Value	Description
US	



## Show Vehicle Inventory

Code Value	Description
AF	
AL	
DZ	
AS	
AD	
AO	
AI	
AQ	
AG	
AR	
AM	
AW	
AU	
AT	
AZ	
BS	
BH	
BD	
BB	
BY	
BE	
BZ	

## Show Vehicle Inventory

---

Code Value	Description
BJ	
BM	
BT	
BO	
BA	
BW	
BV	
BR	
IO	
BN	
BG	
BF	
BI	
KH	
CM	
CA	
CV	
KY	
CF	
TD	
CL	
CN	

## Show Vehicle Inventory

Code Value	Description
CX	
CC	
CO	
KM	
CG	
CD	
CK	
CR	
CI	
HR	
CU	
CY	
CZ	
DK	
DJ	
DM	
DO	
EC	
EG	
SV	
GQ	
ER	

## Show Vehicle Inventory

Code Value	Description
EE	
ET	
FK	
FO	
FJ	
FI	
FR	
GF	
PF	
TF	
GA	
GM	
GE	
DE	
GH	
GI	
GR	
GL	
GD	
GP	
GU	
GT	

## Show Vehicle Inventory

Code Value	Description
GN	
GW	
GY	
HT	
HM	
VA	
HN	
HK	
HU	
IS	
IN	
ID	
IR	
IQ	
IE	
IL	
IT	
JM	
JP	
JO	
KZ	
KE	

## Show Vehicle Inventory

Code Value	Description
KI	
KP	
KR	
KW	
KG	
LA	
LV	
LB	
LS	
LR	
LY	
LI	
LT	
LU	
MO	
MK	
MG	
MW	
MY	
MV	
ML	
MT	

## Show Vehicle Inventory

---

Code Value	Description
MH	
MQ	
MR	
MU	
YT	
MX	
FM	
MD	
MC	
MN	
MS	
MA	
MZ	
MM	
NA	
NR	
NP	
NL	
AN	
NC	
NZ	
NI	

## Show Vehicle Inventory

Code Value	Description
NE	
NG	
NU	
NF	
MP	
NO	
OM	
PK	
PW	
PS	
PA	
PG	
PY	
PE	
PH	
PN	
PL	
PT	
PR	
QA	
RE	
RO	



## Show Vehicle Inventory

---

Code Value	Description
RU	
RW	
SH	
KN	
LC	
PM	
VC	
WS	
SM	
ST	
SA	
SN	
CS	
SC	
SL	
SG	
SK	
SI	
SB	
SO	
ZA	
GS	

## Show Vehicle Inventory

Code Value	Description
ES	
LK	
SD	
SR	
SJ	
SZ	
SE	
CH	
SY	
TW	
TJ	
TZ	
TH	
TL	
TG	
TK	
TO	
TT	
TN	
TR	
TM	
TC	

## Show Vehicle Inventory

Code Value	Description
TV	
UG	
UA	
AE	
GB	
UM	
UY	
UZ	
VU	
VE	
VN	
VG	
VI	
WF	
EH	
YE	
ZM	
ZW	

## County

These field(s) use this type: **County**.

Business party county location

## Show Vehicle Inventory

---

Name	County
------	--------

\*Base XSD Type: string

### Currency

The ISO code identifying the type of currency in use.

Name	Currency
------	----------

\*Base XSD Type: string

Code Value	Description
USD	
ADP	
AED	
AFA	
ALL	
ANG	
AOK	
ARA	
ATS	
AUD	
AWG	
BBD	
BDT	
BEF	
BGL	

## Show Vehicle Inventory

---

Code Value	Description
BHD	
BIF	
BMD	
BND	
BOB	
BRC	
BSD	
BTN	
BUK	
BWP	
BZD	
CAD	
CHF	
CLF	
CLP	
CNY	
COP	
CRC	
CSK	
CUP	
CVE	
CYP	

## Show Vehicle Inventory

---

Code Value	Description
DDM	
DEM	
DJF	
DKK	
DOP	
DZD	
ECS	
EGP	
ESP	
ETB	
EUR	
FIM	
FKP	
FRF	
GBP	
GHC	
GIP	
GMD	
GNF	
GRD	
GTQ	
GWP	

## Show Vehicle Inventory

Code Value	Description
GYD	
HKD	
HNL	
HTG	
HUF	
IDR	
IEP	
ILS	
INR	
IQD	
IRR	
ISK	
ITL	
JMD	
JOD	
JPY	
KES	
KHR	
KMF	
KPW	
KRW	
KWD	

## Show Vehicle Inventory

---

Code Value	Description
KYD	
LAK	
LBP	
LKR	
LRD	
LSL	
LUF	
LYD	
MAD	
MGF	
MNT	
MOP	
MRO	
MTL	
MUR	
MVR	
MWK	
MXN	
MYR	
MZM	
NGN	
NIC	



## Show Vehicle Inventory

Code Value	Description
NLG	
NOK	
NPR	
NZD	
OMR	
PAB	
PEI	
PGK	
PHP	
PKR	
PLZ	
PTE	
PYG	
QAR	
ROL	
RWF	
SAR	
SBD	
SCR	
SDP	
SEK	
SGD	

## Show Vehicle Inventory

---

Code Value	Description
SHP	
SLL	
SKK	
SOS	
SRG	
STD	
SUR	
SVC	
SYP	
SZL	
THB	
TND	
TOP	
TPE	
TRL	
TTD	
TWD	
TZS	
UGS	
UYP	
VEB	
VND	

## Show Vehicle Inventory

Code Value	Description
VUV	
WST	
YDD	
YER	
YUD	
ZAR	
ZRZ	
ZWD	
Other	

### Date

Date conforms to ISO 8601 format rules EX: \d\d\d\d-\d\d-\d\d

Name	Date
------	------

\*Base XSD Type: date

### DateTime

These field(s) use this type: CreationDateTime.

Date and time conforms to ISO 8601format rules without offset EX:2003-11-05T13:15:30Z

Name	DateTime
------	----------

\*Base XSD Type: dateTime

### DBAName

## Show Vehicle Inventory

---

These field(s) use this type: **DBAName**.

Doing Business As name.

<b>Name</b>	<b>DBAName</b>
-------------	----------------

\*Base XSD Type: string

### DealerAssignedNumber

These field(s) use this type: **DealerAssignedNumber**.

The number given to an order by a dealer

<b>Name</b>	<b>DealerAssignedNumber</b>
-------------	-----------------------------

\*Base XSD Type: string

### DealerInstallationInd

These field(s) use this type: **DealerInstallationInd**.

Indicates whether or not the dealership installed the part

<b>Name</b>	<b>DealerInstallationInd</b>
-------------	------------------------------

\*Base XSD Type: string

Code Value	Description
------------	-------------

0	
---	--

1	
---	--

### DeliveryDate

These field(s) use this type: **DeliveryDate**.

The date of original retail vehicle sale

## Show Vehicle Inventory

---

Name	DeliveryDate
------	--------------

\*Base XSD Type: date

### DocumentDateTime

These field(s) use this type: DocumentDateTime.

Is the date and time the document was last created. This is not the date and time that the BOD message instance was created.

Name	DocumentDateTime
------	------------------

\*Base XSD Type: dateTime

### DoorKeyNumber

These field(s) use this type: DoorKeyNumber.

Door Key Number

Name	DoorKeyNumber
------	---------------

\*Base XSD Type: string

### DriverAction

These field(s) use this type: DriverAction,DriverAction.

Driver action (Ex: Drop-Off, Pick-Up, etc)

Name	DriverAction
------	--------------

\*Base XSD Type: string

### EngineNumber

These field(s) use this type: EngineNumber.

## Show Vehicle Inventory

---

Serial number of the engine if vehicle not made for US sale

Name	EngineNumber
------	--------------

\*Base XSD Type: string

### ETADate

These field(s) use this type: ETADate.

Estimated time of arrival

Name	ETADate
------	---------

\*Base XSD Type: date

### ExpirationDate

These field(s) use this type: ExpirationDate,ExpirationDate.

Expiration Date

Name	ExpirationDate
------	----------------

\*Base XSD Type: date

### ExteriorColor

These field(s) use this type: ExteriorColor.

Vehicle Exterior Color(s)

Name	ExteriorColor
------	---------------

\*Base XSD Type: string

### ExteriorColorCode

## Show Vehicle Inventory

---

These field(s) use this type: ExteriorColorCode.

Vehicle exterior color code

<b>Name</b>	<b>ExteriorColorCode</b>
-------------	--------------------------

\*Base XSD Type: string

### FamilyName

These field(s) use this type: FamilyName.

Last Name of business party

<b>Name</b>	<b>FamilyName</b>
-------------	-------------------

\*Base XSD Type: string

### FleetAccount

These field(s) use this type: FleetAccount.

Manufacturer defined fleet account number

<b>Name</b>	<b>FleetAccount</b>
-------------	---------------------

\*Base XSD Type: string

### FleetPurchaseOrderNumber

These field(s) use this type: FleetPurchaseOrderNumber.

Fleet Purchase Order Number vehicle was purchased under

<b>Name</b>	<b>FleetPurchaseOrderNumber</b>
-------------	---------------------------------

\*Base XSD Type: string

## Show Vehicle Inventory

---

### FormattedName

These field(s) use this type: **FormattedName**.

Full Name of business party. Format for name should be "First Last" with no commas between first and last name

Name	FormattedName
------	---------------

\*Base XSD Type: string

### Gender

These field(s) use this type: **Gender**.

Gender of party - M = Male, F= Female

Name	Gender
------	--------

\*Base XSD Type: string

Code Value	Description
M	"M" = Modified
F	Female

### GivenName

These field(s) use this type: **GivenName**.

First Name of business party

Name	GivenName
------	-----------

\*Base XSD Type: string

### HoldCodeInd

These field(s) use this type: **HoldCodeInd**.



## Show Vehicle Inventory

---

Representing hold status

Name	HoldCodeInd
------	-------------

\*Base XSD Type: string

Code Value	Description
0	
1	

## HomeWork

Home or Work

Name	HomeWork
------	----------

\*Base XSD Type: string

Code Value	Description
Home	Home
Work	Work
Other	Other

## IgnitionKeyNumber

These field(s) use this type: **IgnitionKeyNumber**.

Vehicle Ignition Key Number

Name	IgnitionKeyNumber
------	-------------------

\*Base XSD Type: string

## Show Vehicle Inventory

---

### Indicator

These field(s) use this type: **DeliverPendingMailInd.**

0 = No, 1 = Yes

Name	Indicator
*Base XSD Type: string	
Code Value	Description
0	
1	

### InteriorColor

These field(s) use this type: **InteriorColor.**

Vehicle Interior Color(s)

Name	InteriorColor
*Base XSD Type: string	

### InteriorColorCode

These field(s) use this type: **InteriorColorCode.**

Vehicle Interior color code

Name	InteriorColorCode
*Base XSD Type: string	

### InvoiceDate

These field(s) use this type: **InvoiceDate.**

## Show Vehicle Inventory

---

Date of invoice.

Name	InvoiceDate
------	-------------

\*Base XSD Type: date

### InvoiceNumber

These field(s) use this type: **InvoiceNumber**.

Invoice number

Name	InvoiceNumber
------	---------------

\*Base XSD Type: string

### IssuingState

These field(s) use this type: **IssuingState,IssuingState**.

Indicates that State where the license was issued.

Name	IssuingState
------	--------------

\*Base XSD Type: string

### Language

These field(s) use this type: **Language,Language**.

Language conforms to ISO 639-2 rules. Note the format for this field is language-Country (see Country data type for the list of countries with definitions).  
AA "Afar", AB "Abkhazian", AF "Afrikaans", AM "Amharic", AR "Arabic", AS "Assamese", AY "Aymara", AZ "Azerbaijani", BA "Bashkir", BE "Byelorussian", BG "Bulgarian", BH "Bihari", BI "Bislama", BN "Bengali" "Bangla", BO "Tibetan", BR "Breton", CA "Catalan", CO "Corsican", CS "Czech", CY "Welsh", DA "Danish", DE "German", DZ "Bhutani", EL "Greek", EN "English" "American", ES "Spanish", ET "Estonian", EU "Basque", FA "Persian", FI "Finnish", FJ "Fiji", FO "Faeroese", FR "French", FY "Frisian", GA "Irish", GD "Gaelic" "Scots Gaelic", GL "Galician", GN "Guarani", GU "Gujarati", HA "Hausa", HI "Hindi", HR "Croatian", HU "Hungarian", HY "Armenian", IK "Inupiak", IN "Indonesian", IS "Icelandic", IT "Italian", IW "Hebrew", JA "Japanese", JI "Yiddish", JW "Javanese", KA "Georgian", KK "Kazakh", KL "Greenlandic", KM "Cambodian", KN "Kannada", KO "Korean", KS "Kashmiri", KU "Kurdish", KY "Kirghiz", LA "Latin", LN "Lingala", LO "Laothian", LT "Lithuanian", LV "Latvian" "Lettish", MG

## Show Vehicle Inventory

"Malagasy". MI "Maori", MK "Macedonian", ML "Malayalam", MN "Mongolian", MO "Moldavian", MR "Marathi", MS "Malay", MT "Maltese", MY "Burmese", NA "Nauru", NE "Nepali", NL "Dutch", NO "Norwegian", OC "Occitan", OM "Oromo" "Afan", OR "Oriya", PA "Punjabi", PL "Polish", PS "Pashto" "Pushto", PT "Portuguese", QU "Quechua", RM "Rhaeto-Romance", RN "Kirundi", RO "Romanian", RU "Russian", RW "Kinyarwanda", SA "Sanskrit", SD "Sindhi", SG "Sangro", SH "Serbo-Croatian", SI "Singhalese", SK "Slovak", SL "Slovenian", SM "Samoan", SN "Shona", SO "Somali", SQ "Albanian", SR "Serbian", SS "Siswati", ST "Sesotho", SU "Sudanese", SV "Swedish", SW "Swahili", TA "Tamil", TE "Tegulu", TG "Tajik", TH "Thai", TI "Tigrinya", TK "Turkmen", TL "Tagalog", TN "Setswana", TO "Tonga", TR "Turkish", TS "Tsonga", TT "Tatar", TW "Twi", UK "Ukrainian", UR "Urdu", UZ "Uzbek", VI "Vietnamese", WO "Wolof", XH "Xhosa", YO "Yoruba", ZH "Chinese", ZU "Zulu"

Name	Language
------	----------

\*Base XSD Type: string

Code Value	Description
en-US	
en-CA	
aa-ET	
ab-GE	
af-ZA	
am-ET	
ar-SA	
as-IN	
ay-BO	
az-AZ	
ba-RU	
be-BY	
bg-BG	
bh-IN	
bi-VU	

## Show Vehicle Inventory

---

Code Value	Description
bn-BD	
bo-BT	
br-FR	
ca-ES	
co-FR	
cs-CZ	
cy-GB	
da-DE	
de-DE	
dz-BT	
el-GR	
es-ES	
et-EE	
eu-ES	
fa-AF	
fi-FI	
fj-FJ	
fo-FO	
fr-CA	
fr-FR	
fy-NL	
ga-IE	

## Show Vehicle Inventory

Code Value	Description
gd-GB	
gl-ES	
gn-PY	
gu-IN	
ha-NG	
hi-IN	
hr-HR	
hu-HU	
hy-AM	
ik-GL	
in-ID	
is-IS	
it-IT	
iw-IL	
ja-JP	
ji-IL	
jw-ID	
ka-GE	
kk-KZ	
kl-GL	
km-KH	
kn-IN	

## Show Vehicle Inventory

---

Code Value	Description
ko-KP	
ko-KR	
ks-IN	
ku-IQ	
ky-CN	
la-VA	
ln-CD	
lo-LA	
lt-LT	
lv-LV	
mg-MG	
mi-NZ	
mk-MK	
ml-IN	
mn-MN	
mo-MO	
mr-IN	
ms-MY	
mt-MH	
my-MM	
na-NR	
ne-NP	

## Show Vehicle Inventory

---

Code Value	Description
nl-NL	
no-NO	
oc-FR	
om- ET	
or-IN	
pa-IN	
pl-PL	
ps-PK	
pt-PT	
qu-PE	
rm-CH	
rn-BI	
ro-RO	
ru-RU	
rw-RW	
sa-IN	
sd-PK	
sg-CF	
sh-HR	
si-LK	
sk-SK	
sl-SI	



## Show Vehicle Inventory

---

Code Value	Description
sm-WS	
sn-ZW	
so-SO	
sq-AL	
sr-CS	
ss-ZA	
st-ZA	
su-SD	
sv-SE	
sw-TL	
ta-IN	
te-IN	
tg-TJ	
th-TH	
ti-ET	
tk-TM	
tl-PH	
tn-ZA	
to-TO	
tr-TR	
ts-ZA	
tt-RU	

## Show Vehicle Inventory

Code Value	Description
tw-GH	
uk-UA	
ur-PK	
uz-UZ	
vi-VN	
wo-SN	
xh-ZA	
yo-NG	
zh-CN	
zu-ZA	

### LicenseNumber

These field(s) use this type: **LicenseNumber**.

State License plate number of vehicle

Name	LicenseNumber
------	---------------

\*Base XSD Type: string

### LoadNumber

These field(s) use this type: **LoadNumber**.

Shipment carrier-assigned load number

Name	LoadNumber
------	------------

\*Base XSD Type: string

## Show Vehicle Inventory

---

### Make

These field(s) use this type: **Make.**

Vehicle make code - Usually available in the VIN number (use NCIC code).

Name	Make
------	------

\*Base XSD Type: string

### Manufacturer

These field(s) use this type: **Manufacturer.**

Manufacturer Name

Name	Manufacturer
------	--------------

\*Base XSD Type: string

### ManufacturerInstalledInd

These field(s) use this type: **ManufacturerInstalledInd.**

Indicates manufacturer-installed accessories

Name	ManufacturerInstalledInd
------	--------------------------

\*Base XSD Type: string

Code Value	Description
------------	-------------

0	
---	--

1	
---	--

### MarketingMailInd

These field(s) use this type: **MarketingMailInd,MarketingMailInd.**

## Show Vehicle Inventory

---

Indicates customers whom have requested no marketing mail

Name	MarketingMailInd
------	------------------

\*Base XSD Type: string

Code Value	Description
0	
1	

### MiddleName

These field(s) use this type: MiddleName.

Middle Initial of business party

Name	MiddleName
------	------------

\*Base XSD Type: string

### MileageMeasure

M = Miles, K = Kilometers

Name	MileageMeasure
------	----------------

\*Base XSD Type: string

Code Value	Description
M	"M" = Modified
K	Kilometers

### MiscellaneousCode

## Show Vehicle Inventory

---

These field(s) use this type: MiscellaneousCode.

Miscellaneous code

Name	MiscellaneousCode
------	-------------------

\*Base XSD Type: string

### Model

These field(s) use this type: Model.

Manufacturer-assigned model code of vehicle - Usually available in the VIN number (use NCIC code)

Name	Model
------	-------

\*Base XSD Type: string

### ModelDescription

These field(s) use this type: ModelDescription.

Descriptive vehicle model name

Name	ModelDescription
------	------------------

\*Base XSD Type: string

### ModelYear

These field(s) use this type: ModelYear.

Vehicle designated model year

Name	ModelYear
------	-----------

\*Base XSD Type: gYear

## Show Vehicle Inventory

---

### Name

These field(s) use this type: Name,GivenName,FamilyName,FormattedName.

Name of the Party.

Name	Name
------	------

\*Base XSD Type: string

### NonUSVehicleInd

These field(s) use this type: NonUSVehicleInd.

Indicates whether the vehicle was produced for the United States or not

Name	NonUSVehicleInd
------	-----------------

\*Base XSD Type: string

Code Value	Description
------------	-------------

0	
---	--

1	
---	--

### Note

A free form note.

Name	Note
------	------

\*Base XSD Type: string

### OdometerStatus

These field(s) use this type: OdometerStatus.

Status of odometer at trade-in. Example:: Replaced, Tampered, Miles> 90,000, etc.

## Show Vehicle Inventory

---

Name	OdometerStatus
------	----------------

\*Base XSD Type: string

### OptionName

These field(s) use this type: OptionName.

Name of vehicle option

Name	OptionName
------	------------

\*Base XSD Type: string

### OptionNotes

These field(s) use this type: OptionNotes.

Free form text related to option

Name	OptionNotes
------	-------------

\*Base XSD Type: string

### OptionOrigin

These field(s) use this type: OptionOrigin.

Identifies the option installer

Name	OptionOrigin
------	--------------

\*Base XSD Type: string

### OptionSalesCode

These field(s) use this type: OptionSalesCode.

## Show Vehicle Inventory

---

Further definition of accessories and option packages - Indicates whether ordered option, special package, standard, etc.

Name	OptionSalesCode
------	-----------------

\*Base XSD Type: string

### OptionSecurityCode

These field(s) use this type: OptionSecurityCode.

Security code to unlock option. (i.e, radio code)

Name	OptionSecurityCode
------	--------------------

\*Base XSD Type: string

### OptionSerialNumber

These field(s) use this type: OptionSerialNumber.

Serial number of Option

Name	OptionSerialNumber
------	--------------------

\*Base XSD Type: string

### OptionStockNumber

These field(s) use this type: OptionStockNumber.

Stock Number of Vehicle Option

Name	OptionStockNumber
------	-------------------

\*Base XSD Type: string

### OrderDate



## Show Vehicle Inventory

---

These field(s) use this type: **OrderDate**.

Date order originally placed

Name	OrderDate
------	-----------

\*Base XSD Type: date

### PartType

These field(s) use this type: **PartType**.

Specifies whether the parts are indicated by manufacturer part code or Part Number - H = Manufacturer Part Code, P = Part Number

Name	PartType
------	----------

\*Base XSD Type: string

Code Value	Description
H	Manufacturer Part Code
P	"P" = Pending

### PortInstalledInd

These field(s) use this type: **PortInstalledInd**.

Indicates Port-installed accessories

Name	PortInstalledInd
------	------------------

\*Base XSD Type: string

Code Value	Description
0	
1	

## Show Vehicle Inventory

---

### PostalCode

These field(s) use this type: **PostalCode**.

Postal Code of the Address.

Name	PostalCode
------	------------

\*Base XSD Type: string

### PreferredContactMethod

These field(s) use this type: **PreferredContactMethod**.

Preferred contact method

Name	PreferredContactMethod
------	------------------------

\*Base XSD Type: string

Code Value	Description
Day Phone	Day Phone
Evening Phone	Evening Phone
Cell Phone	Cell Phone
Work Fax	Work Fax
Home Fax	Home Fax
Pager	Pager
Work Email	Work Email
Home Email	Home Email
US Mail	US Mail
Other	Other
N/A	Not Applicable

## Show Vehicle Inventory

---

### PreferredContactMethodOrganization

These field(s) use this type: **PreferredContactMethod**.

Preferred Contact Method Organization

Name	PreferredContactMethodOrganization
------	------------------------------------

\*Base XSD Type: string

Code Value	Description
Day Phone	Day Phone
Cell Phone	Cell Phone
Work Fax	Work Fax
Pager	Pager
Work Email	Work Email
US Mail	US Mail
Other	Other

### PreferredLanguage

These field(s) use this type: **PreferredLanguage**.

Preferred language

Name	PreferredLanguage
------	-------------------

\*Base XSD Type: string

Code Value	Description
en-US	
en-CA	
aa-ET	

## Show Vehicle Inventory

---

Code Value	Description
ab-GE	
af-ZA	
am-ET	
ar-SA	
as-IN	
ay-BO	
az-AZ	
ba-RU	
be-BY	
bg-BG	
bh-IN	
bi-VU	
bn-BD	
bo-BT	
br-FR	
ca-ES	
co-FR	
cs-CZ	
cy-GB	
da-DE	
de-DE	
dz-BT	

## Show Vehicle Inventory

---

Code Value	Description
el-GR	
es-ES	
et-EE	
eu-ES	
fa-AF	
fi-FI	
fj-FJ	
fo-FO	
fr-CA	
fr-FR	
fy-NL	
ga-IE	
gd-GB	
gl-ES	
gn-PY	
gu-IN	
ha-NG	
hi-IN	
hr-HR	
hu-HU	
hy-AM	
ik-GL	

## Show Vehicle Inventory

Code Value	Description
in-ID	
is-IS	
it-IT	
iw-IL	
ja-JP	
ji-IL	
jw-ID	
ka-GE	
kk-KZ	
kl-GL	
km-KH	
kn-IN	
ko-KP	
ko-KR	
ks-IN	
ku-IQ	
ky-CN	
la-VA	
ln-CD	
lo-LA	
lt-LT	
lv-LV	

## Show Vehicle Inventory

Code Value	Description
mg-MG	
mi-NZ	
mk-MK	
ml-IN	
mn-MN	
mo-MO	
mr-IN	
ms-MY	
mt-MH	
my-MM	
na-NR	
ne-NP	
nl-NL	
no-NO	
oc-FR	
om- ET	
or-IN	
pa-IN	
pl-PL	
ps-PK	
pt-PT	
qu-PE	

## Show Vehicle Inventory

Code Value	Description
rm-CH	
rn-BI	
ro-RO	
ru-RU	
rw-RW	
sa-IN	
sd-PK	
sg-CF	
sh-HR	
si-LK	
sk-SK	
sl-SI	
sm-WS	
sn-ZW	
so-SO	
sq-AL	
sr-CS	
ss-ZA	
st-ZA	
su-SD	
sv-SE	
sw-TL	



## Show Vehicle Inventory

Code Value	Description
ta-IN	
te-IN	
tg-TJ	
th-TH	
ti-ET	
tk-TM	
tl-PH	
tn-ZA	
to-TO	
tr-TR	
ts-ZA	
tt-RU	
tw-GH	
uk-UA	
ur-PK	
uz-UZ	
vi-VN	
wo-SN	
xh-ZA	
yo-NG	
zh-CN	
zu-ZA	

## Show Vehicle Inventory

---

### PriceExplanation

These field(s) use this type: **PriceExplanation.**

Explanatory Note for Pricing

Name	PriceExplanation
------	------------------

\*Base XSD Type: string

### PricingTypeSource

These field(s) use this type: **PricingTypeSource.**

Source from which pricing type data originated (i.e. Blue Book, NADA, etc.).

Name	PricingTypeSource
------	-------------------

\*Base XSD Type: string

### PrimaryContactInd

These field(s) use this type: **PrimaryContactInd.**

Indicates if contact is primary contact

Name	PrimaryContactInd
------	-------------------

\*Base XSD Type: string

Code Value	Description
0	
1	

### PrimaryDriverInd

These field(s) use this type: **PrimaryDriverInd,PrimaryDriverInd.**

## Show Vehicle Inventory

---

Identifies customer as primary driver.

Name	PrimaryDriverInd
------	------------------

\*Base XSD Type: string

Code Value	Description
0	
1	

### Reference

These field(s) use this type: **ReferenceId.**

Reference notation

Name	Reference
------	-----------

\*Base XSD Type: string

### ReferenceNumber

Reference number

Name	ReferenceNumber
------	-----------------

\*Base XSD Type: string

### RegulatoryDate

These field(s) use this type: **RegulatoryDate.**

Date regulatory requirement identification number is assigned (Ex: Date Pedimento number is assigned to vehicle)

Name	RegulatoryDate
------	----------------

\*Base XSD Type: date

## Show Vehicle Inventory

---

### RegulatoryType

These field(s) use this type: **RegulatoryType**.

Type of regulatory requirement (Ex: customs)

Name	RegulatoryType
------	----------------

\*Base XSD Type: string

### RejectCode

These field(s) use this type: **RejectCode**.

A code representing a reject reason

Name	RejectCode
------	------------

\*Base XSD Type: string

### RejectResponsibilityCode

These field(s) use this type: **RejectResponsibilityCode**.

A code indicating who has action to take to address a reject

Name	RejectResponsibilityCode
------	--------------------------

\*Base XSD Type: string

### RelationshipCode

These field(s) use this type: **RelationshipCode,RelationshipCode**.

Indicates the Business Party's relationship to the primary Party (e.g., mother, father, husband, etc.).

Name	RelationshipCode
------	------------------

\*Base XSD Type: string

## Show Vehicle Inventory

---

### RestrictionInd

These field(s) use this type: **RestrictionInd**.

Indication that vehicle has restrictions on its use

Name	RestrictionInd
*Base XSD Type: string	
Code Value	Description
0	
1	

### SaleClass

These field(s) use this type: **SaleClass**.

Class of sale.

Name	SaleClass
*Base XSD Type: string	
Code Value	Description
New	Never owned.
Used	Previously Owned
Demo	Demonstration item.
Other	Other
N/A	Not Applicable
Floor Sample	This is a vehicle that is provided in the showroom as an example.
Factory	Identifies that the vehicle may have been used as a product demonstration for an official or executive from the manufacturer.

## Show Vehicle Inventory

---

### Salutation

These field(s) use this type: Salutation.

Title or greeting of business party

Name	Salutation
------	------------

\*Base XSD Type: string

### SecondaryPassword

These field(s) use this type: SecondaryPassword.

Secondary password used to validate access to the dealer information

Name	SecondaryPassword
------	-------------------

\*Base XSD Type: string

### SerialNumber

Serial Number

Name	SerialNumber
------	--------------

\*Base XSD Type: string

### ShortMfg

These field(s) use this type: SenderNameCode, DestinationNameCode.

Short Manufacturer or RSP Codes

Name	ShortMfg
------	----------

\*Base XSD Type: string

## Show Vehicle Inventory

---

### SortName

These field(s) use this type: SortName.

Index name used as a sort for report purposes

Name	SortName
------	----------

\*Base XSD Type: string

### StateOrProvince

These field(s) use this type: StateOrProvince.

Is the State or Province of a given Address.

Name	StateOrProvince
------	-----------------

\*Base XSD Type: string

### StatusDate

These field(s) use this type: StatusDate.

The date the current status was recorded

Name	StatusDate
------	------------

\*Base XSD Type: date

### Suffix

These field(s) use this type: Suffix.

Business Party name suffix designation if individual Ex: Sr, Jr, III, etc.

Name	Suffix
------	--------

\*Base XSD Type: string

## Show Vehicle Inventory

---

### SystemVersion

These field(s) use this type: **SystemVersion**.

The sender's software version number .

Name	SystemVersion
------	---------------

\*Base XSD Type: string

### TargetBuildDate

These field(s) use this type: **TargetBuildDate**.

The date the OEM expects to build the vehicle

Name	TargetBuildDate
------	-----------------

\*Base XSD Type: date

### TaxabilityInd

These field(s) use this type: **TaxabilityInd**.

Determines whether an item or amount is taxable.

Name	TaxabilityInd
------	---------------

\*Base XSD Type: string

Code Value	Description
------------	-------------

0	
---	--

1	
---	--

### TaxType

These field(s) use this type: **TaxType**.



## Show Vehicle Inventory

---

Tax Type

**Name**

**TaxType**

Base XSD Type: string

Code Value

Description

Total

Amount

Labor

Parts

Claim

Dealer

Dealer

Deductible

Prorated

Other

Other

Luxury

Vehicle Inventory

Taxes Not In Cash Price

Document Stamp

Sales

Tire

Personal Property

Registration

Monthly/Use

Weight

## Show Vehicle Inventory

Code Value	Description
Adjustment	
DownPayment	
CapCostReduction	
Lieu	
CurrentYear	
N/A	Not Applicable
LocalOption	Tennessee Tax - combination of city and county.
SingleArticle	Tennessee Tax - State Tax
Gas	Gas tax levied to applicable vehicles or by state/province law. (Referred to in US as "Gas Guzzler" tax).
Total Monthly/Use	The total amount of monthly use tax for a payment on a contract.
Service Contract	Tax charged on service contracts (where applicable).
Adjusted Sales	Adjusted sales tax due to tax modifications when capitalized (i.e. NY)
Total Sales/Use	The total amount of sales/use tax for a single payment contract.
Air Conditioning Excise	Provincial tax providing for the installation or removal of freon. (Canada)
Purchase and Use	A type of tax that is assessed upon "tax free" tangible personal property purchased by a resident of the assessing state for use, storage or consumption of goods in that state (not for resale), regardless of where the purchase took place. The tax is a one time retail tax due at registration or titling of a vehicle.
County Tax	A county tax charged based on the location of the dealer and the customer. An example, The Cook County Tax.
General Excise	This is a general excise tax that a state or region could impose.
Gross Receipt	A gross receipts tax, sometimes referred to as a gross excise tax, is a tax on the total gross revenues of a company, regardless of their source.
Tax on Trade-In	Tax due on a trade-in vehicle.

## Show Vehicle Inventory

Code Value	Description
Tax on Upfront Fees	Total tax due on fees paid upfront.
Tax on Acquisition Fee	Tax due on amount of acquisition fee.
Environmental Tax	Environmental Levy / Tax.
Motor Vehicle Tax	Tax paid at of registration based on the vehicle's age and MSRP.
Wheel Tax	A tax levied by cities and villages to be credited to a road fund of the city or village

## TaxTypeId

These field(s) use this type: **TaxTypeId**.

CS - City, CP - County, ST - State, OT - Other, EX - Excise, VAT - Value Added Tax, PST - Provincial Sales Tax , RT - Rental, GST - Goods and Services Tax, HST - Harmonized Tax, ART - Air Tax, QST - Quebec Sales Tax, IMP - Import Tax

Name	TaxTypeId
*Base XSD Type: string	
Code Value	Description
CS	City
CP	County
ST	State
OT	"OT" = Other
EX	Excise
VAT	Value Added
PST	Provincial Sales Tax
RT	Rental
GST	Goods and Services Tax

## Show Vehicle Inventory

Code Value	Description
HST	Harmonized Tax
ART	Air Tax
QST	Quebec Sales Tax
IMP	Import Tax

## TelematicsServiceInd

These field(s) use this type: **TelematicsServiceInd**.

Indication whether Telematics Service Subscription is turned on

Name	TelematicsServiceInd
------	----------------------

\*Base XSD Type: string

Code Value	Description
0	
1	

## Text

These field(s) use this type:

**CreatorNameCode,StoreNumber,AreaNumber>Password,DestinationSoftwareCode,DestinationSoftware,StoreNumber,AreaNumber,LogicalId,Component,T**

Indicates generic text type

Name	Text
------	------

\*Base XSD Type: string

## TransactionType

## Show Vehicle Inventory

---

These field(s) use this type: **TransactionType**.

Type of transaction

Name	TransactionType
*Base XSD Type: string	
Code Value	Description
Initial	Initial transaction
Update	Update transaction
Delete	Delete transaction
Cancel	Cancel transaction

### TransmissionCode

These field(s) use this type: **TransmissionCode**.

Transmission Serial Number

Name	TransmissionCode
*Base XSD Type: string	

### TransmissionType

These field(s) use this type: **TransmissionType**.

Vehicle Transmission type - 3 = 3 speed, 4 = 4 speed, 5 = 5 speed, 6 = 6 speed, A - Automatic

Name	TransmissionType
*Base XSD Type: string	
Code Value	Description
3	3 Speed

## Show Vehicle Inventory

Code Value	Description
4	4 Speed
5	5 Speed
6	6 Speed
A	"A" = Automatic
Automatic 3	Automatic 3 speed transmission type
Automatic 4	Automatic 4 speed transmission type
Automatic 5	Automatic 5 speed transmission type
Automatic 6	Automatic 6 speed transmission type
Automatic 7	Automatic 7 speed transmission type
7	7 Speed
CVT Automatic 3	Continuously Variable T ransmission Automatic 3 speed transmission type (natural gas and hybrid).
CVT Automatic 4	Continuously Variable T ransmission Automatic 4 speed transmission type (natural gas and hybrid).
CVT Automatic 5	Continuously Variable T ransmission Automatic 5 speed transmission type (natural gas and hybrid).
CVT Automatic 6	Continuously Variable T ransmission Automatic 6 speed transmission type (natural gas and hybrid).
CVT Automatic 7	Continuously Variable T ransmission Automatic 7 speed transmission type (natural gas and hybrid).
M	M = Manual

## TrimCode

These field(s) use this type: **TrimCode**.

## Show Vehicle Inventory

---

Manufacturer assigned trim code

Name	TrimCode
------	----------

\*Base XSD Type: string

### Type

Type

Name	Type
------	------

\*Base XSD Type: string

### UrbanizationCode

These field(s) use this type: UrbanizationCode, UrbanizationCode.

Geographic definition of a metropolitan or suburban area

Name	UrbanizationCode
------	------------------

\*Base XSD Type: string

### URI

These field(s) use this type: SenderURI, DestinationURI.

URI

Name	URI
------	-----

\*Base XSD Type: anyURI

### VehicleAcquisitionDate

These field(s) use this type: VehicleAcquisitionDate.

## Show Vehicle Inventory

---

Actual Date vehicle was acquired by Dealership

Name	VehicleAcquisitionDate
------	------------------------

\*Base XSD Type: date

### VehicleAllocatedDate

These field(s) use this type: VehicleAllocatedDate.

Date vehicle was allocated and/or a delivery work order was cut

Name	VehicleAllocatedDate
------	----------------------

\*Base XSD Type: date

### VehicleDemoInd

These field(s) use this type: VehicleDemoInd.

Indicates whether vehicle was ever a demo

Name	VehicleDemoInd
------	----------------

\*Base XSD Type: string

Code Value	Description
------------	-------------

0	
---	--

1	
---	--

### VehicleLocation

These field(s) use this type: VehicleLocation.

Indicates the physical location of the vehicle

Name	VehicleLocation
------	-----------------



## Show Vehicle Inventory

---

\*Base XSD Type: string

### VehicleNote

These field(s) use this type: VehicleNote.

Any vehicle related notes

Name	VehicleNote
------	-------------

\*Base XSD Type: string

### VehicleOrderNumber

These field(s) use this type: VehicleOrderNumber.

Vehicle Order Number (VON)

Name	VehicleOrderNumber
------	--------------------

\*Base XSD Type: string

### VehicleOrderType

These field(s) use this type: VehicleOrderType.

Identifies vehicle order type

Name	VehicleOrderType
------	------------------

\*Base XSD Type: string

### VehiclePricingType

These field(s) use this type: VehiclePricingType.

Designates type of pricing for vehicle

## Show Vehicle Inventory

Name	VehiclePricingType
*Base XSD Type: string	
Code Value	Description
MSRP	
Hold Back	
Destination/Handling	
Group Fund Price	
Wholesale Price	
Wholesale Cost	
Actual Cash Value	
Employee	
Invoice	
Sale Price	
Final MSRP	
Base MSRP	
Employee Order Price	
Employee Stock Price	
Other	Other
Selling Price	
Cap Cost	
Total Option Price	
Total Option Cost	
Retail	

## Show Vehicle Inventory

Code Value	Description
N/A	Not Applicable
MSRP Discount	
Gross Cap Cost	
Net Cap Cost	
Taxable Selling Price	
Loan	Amount lenders typically loan on the listed vehicle.
Trade-In	Amount allowed by dealers on a trade.
Adjusted Gross Cap Cost	Adjusted gross cap cost due to tax calculations.
Adjusted Net Cap Cost	Adjusted net cap cost due to tax calculations.
Total Option MSRP	Total of all itemized products of the Manufactured Suggested Retail Price.

## VehicleShipDate

These field(s) use this type: VehicleShipDate.

Date shipped from warehouse or distribution center

Name	VehicleShipDate
------	-----------------

\*Base XSD Type: date

## VehicleStatus

These field(s) use this type: VehicleStatus.

Vehicle status code - Example status could be Built, Scheduled, Shipped, In-Transit, Sold, etc.

Name	VehicleStatus
------	---------------

\*Base XSD Type: string

## Show Vehicle Inventory

---

### VehicleStock

These field(s) use this type: VehicleStock.

Dealer assigned vehicle stock number

Name	VehicleStock
------	--------------

\*Base XSD Type: string

### VIN

These field(s) use this type: VIN.

Federally defined 17 position vehicle identification number

Name	VIN
------	-----

\*Base XSD Type: string

### Year

Year

Name	Year
------	------

\*Base XSD Type: gYear

### Fields and Global Attributes

Global declarations are items such as elements, attribute groups, and group definitions. These items are not defined within any particular component. A component may reference these definitions. Within a STAR XML Schemas these are typically known as global fields.

#### ApplicationArea

These field(s) use this type: **ApplicationArea**.

Provides the information that an application may need to know in order to communicate in an integration of two or more business applications. The ApplicationArea is used at the applications layer of communication. While the integration frameworks web services and middleware provide the communication layer that OAGIS operates on top of.

Provides the information that an application may need to know in order to communicate in an integration of two or more business applications. The ApplicationArea is used at the applications layer of communication. While the integration frameworks web services and middleware provide the communication layer that OAGIS operates on top of.

<b>Name</b>	<b>ApplicationArea</b>
<b>Type</b>	<b>ApplicationArea</b>
<b>Nilable</b>	<b>no</b>
<b>Abstract</b>	<b>no</b>

#### XML Instance Representation

```
<ApplicationArea>
  <Sender> Sender </Sender> [1]
  <CreationDateTime> DateTime </CreationDateTime> [1]
  <Signature> Signature </Signature> [0..1]
  <BODId> Code </BODId> [0..1]
  <Destination> Destination </Destination> [1]
</ApplicationArea>
```

#### Header

<b>Name</b>	<b>Header</b>
-------------	---------------

## Show Vehicle Inventory

Type	VehicleInventoryHeader
Niltable	no
Abstract	no

### XML Instance Representation

```
<Header>
  <DocumentDateTime> DocumentDateTime </DocumentDateTime> [0..1]
  <SecondaryPassword> SecondaryPassword </SecondaryPassword> [0..1]
  <SecondaryDealerNumber> SecondaryDealerNumber </SecondaryDealerNumber> [0..1]
  <DocumentId> DocumentId </DocumentId> [0..1]
  <InvoiceDate> InvoiceDate </InvoiceDate> [0..1]
  <TransactionType> TransactionType </TransactionType> [0..1]
  <SoldTo> SoldToParty </SoldTo> [0..1]
  <ShipTo> ShipToParty </ShipTo> [0..1]
  <Manufacturer> ManufacturerParty </Manufacturer> [0..1]
</Header>
```

## Invoice

These field(s) use this type: **Invoice**.

Name	Invoice
Type	Invoice
Niltable	no
Abstract	no

### XML Instance Representation

```
<Invoice>
  <InvoiceNumber> InvoiceNumber </InvoiceNumber> [0..1]
  <InvoiceTotal> InvoiceTotal </InvoiceTotal> [0..1]
  <LoadNumber> LoadNumber </LoadNumber> [0..1]
  <BorderCrossingInd> BorderCrossingInd </BorderCrossingInd> [0..1]
```

# Show Vehicle Inventory

```
<ETADate> ETADate </ETADate> [0..1]
<CarrierId> CarrierId </CarrierId> [0..1]
<Warehouse> Warehouse </Warehouse> [0..1]
<OrderDate> OrderDate </OrderDate> [0..1]
<Vehicle> InventoryVehicleExtended </Vehicle> [0..*]
<Tax> Tax </Tax> [0..*]
<DealerAssignedNumber> DealerAssignedNumber </DealerAssignedNumber> [0..1]
<StatusDate> StatusDate </StatusDate> [0..1]
<TargetBuildDate> TargetBuildDate </TargetBuildDate> [0..1]
<RejectCode> RejectCode </RejectCode> [0..1]
<OptionRestrictionStatements> OptionRestrictionStatements </OptionRestrictionStatements> [0..1]
<HoldCodeInd> HoldCodeInd </HoldCodeInd> [0..1]
<RejectResponsibilityCode> RejectResponsibilityCode </RejectResponsibilityCode> [0..1]
</Invoice>
```

## Show

These field(s) use this type: **Show**.

The Show verb is used when sending the information about a specific instance of a business document or entity. The Show verb may be used to respond to a Get request or it can be used in a publish scenario, where it pushes information to other applications based on a business event. Although BODs based on this verb do not commonly cause updates to occur, there may be times when the component receiving the Show decides to use the information it receives to update. This is entirely the decision of the receiving software component and is not forbidden. The behavior of the Show verb is quite straight forward with one exception. The Show response to any Get request needs to read the request carefully to ensure the response is returning the requested Data Types.

Name	Show
Type	Show
Nullable	no
Abstract	no

## XML Instance Representation

```
<Show
confirm="ConfirmType [0..1]">
  <OriginalBODId> xsd:NMTOKEN </OriginalBODId> [0..1]
</Show>
```

## Show Vehicle Inventory

---

### ShowVehicleInventory

These field(s) use this type: ShowVehicleInventory.

<b>Name</b>	ShowVehicleInventory
<b>Type</b>	ShowVehicleInventory
<b>Nilable</b>	no
<b>Abstract</b>	no

### XML Instance Representation

```
<ShowVehicleInventory  
revision="Text [0..1]"  
release="8.1-Lite [0..1]"  
environment="Text [0..1]"  
lang="Language [0..1]"  
bodVersion="Text [0..1]">  
  <ApplicationArea> ... </ApplicationArea> [1]  
  <DataArea> ShowVehicleInventoryDataArea </DataArea> [1]  
</ShowVehicleInventory>
```

### VehicleInventory

These field(s) use this type: VehicleInventory.

<b>Name</b>	VehicleInventory
<b>Type</b>	VehicleInventory
<b>Nilable</b>	no
<b>Abstract</b>	no

### XML Instance Representation

```
<VehicleInventory>
```



## Show Vehicle Inventory

---

```
<Header> ... </Header> [1]
<Invoice> ... </Invoice> [0..*]
</VehicleInventory>
```

### Verb

These field(s) use this type: **Verb**.

<b>Name</b>	<b>Verb</b>
<b>Type</b>	<b>Verb</b>
<b>Nilable</b>	<b>no</b>
<b>Abstract</b>	<b>yes</b>

### XML Instance Representation

```
<Verb/>
```

## Show Vehicle Inventory

---